



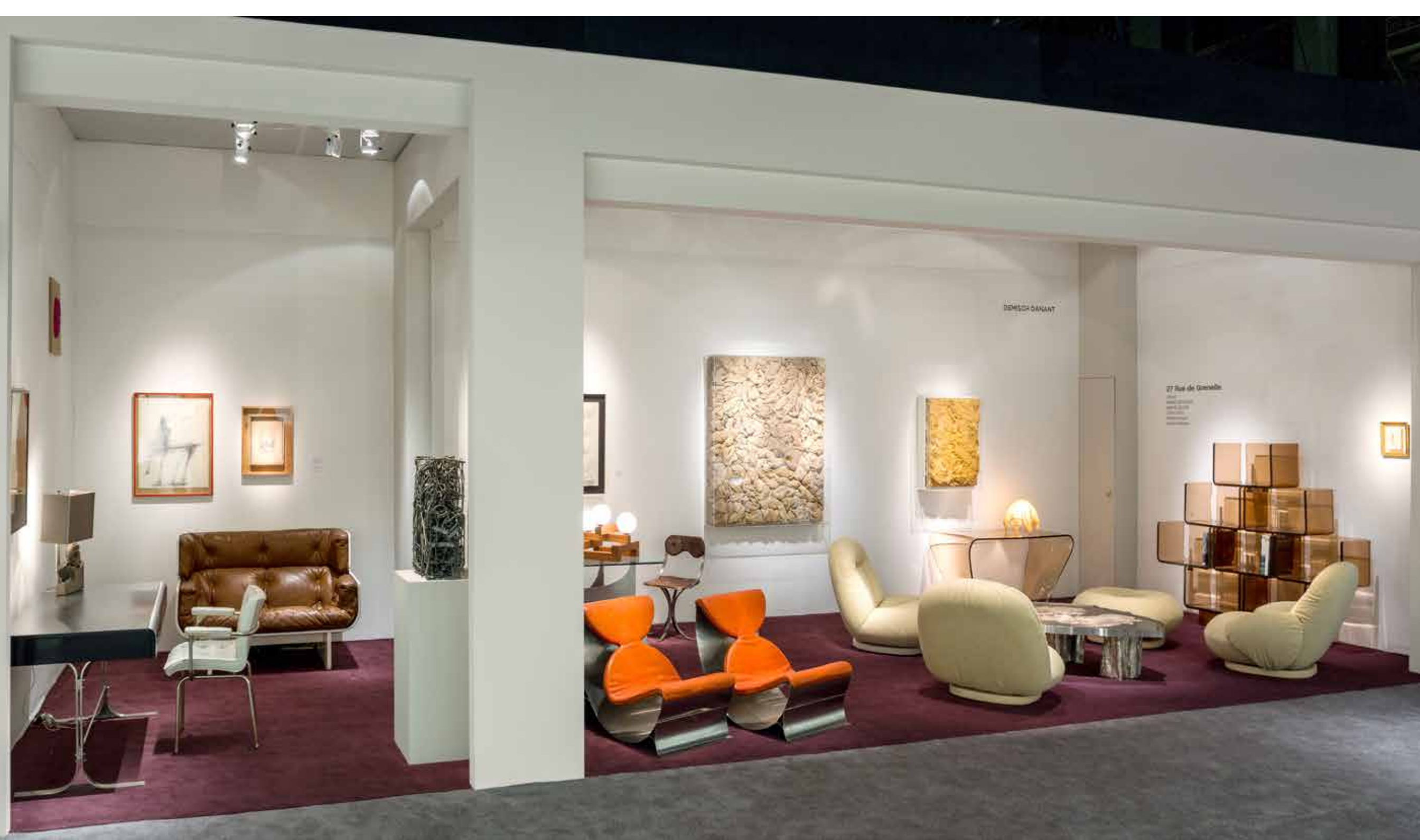
**27 Rue de
Grenelle**

César

FRANCOIS ARNAL
MICHEL BOYER
JEAN DIVE
JACQUES GRANGE
PIERRE PAULIN
MARIA PERGAY

THE SALON ART+DESIGN
NOVEMBER 12-16, 2015

DEMISCH DANANT



DEMESCH OANDAAT

27 Rue de Giacchino
1000 Brussels
Belgium
www.demesch.com

ABOUT THE EXHIBITION

27 Rue de Grenelle

November 12-16, 2015

Park Avenue Armory, New York

Booth A11

From November 12 -16, 2015, *27 Rue de Grenelle* will fill the gallery's stand (A11) at The Salon Art + Design at the Park Avenue Armory, New York. Curated by Stephane Danant, the exhibition brings together exceptional furniture and lighting by **Francois Arnal, Michel Boyer, Jean Dives, Jacques Grange, Pierre Paulin, and Maria Pergay**, with drawings and wall sculptures by **César**, the internationally celebrated French artist and founding member of the Nouveaux Réalistes. The show takes its title from the quintessential Left Bank street that is the address of some of the most discretely luxurious residences in Europe, homes where design and art mingle in a uniquely French approach to interiors. Rue de Grenelle was also once home to César, whose rise to fame paralleled the emergence of American Pop Art.

Styled as a Parisian apartment, *27 Rue de Grenelle* suggests the atmosphere of eclectic sophistication that would have enveloped visitors to the domain of a discerning Paris collector of the 1970s. Here one finds Jean Dives' elegantly spartan *Desk* (1971) and René Jean Caillette's rare leather and molded plywood *Sofa* settee (1966) accompanied by an array of Pierre Paulin's various upholstered *Pacha* chairs (1975), Michel Boyer's sensual curving glass and bronze *Screen Lamp* (1975), and the suggestively tangled metal skeins of César's 1970 *Untitled* compression sculpture. Such distinctive juxtapositions of relaxed sensuality and high refinement are definitive elements of French style that intensified in the 1970s, when designers and artists experimented avidly with such new materials as Plexiglas, industrial plastics, and other unexpected mediums. Similarly, bold pairings of art and design – the beguiling visual puns that reverberate between such objects as artist Philippe Hiquily's 1966 glass and steel *Table* and the legs of the centaurs in César's charcoals – have always characterized the defining French appreciation for the applied arts as the true peer of fine art.

Among other highlights of *27 Rue de Grenelle* are Pierre Paulin's *Élysee Bookcase* (1971); Francois Arnal's Plexiglas *Elice Console* (1968), commissioned by legendary decorator and international tastemaker Henri Samuel for his own apartment; and Maria Pergay's *Pair of Lounge Chairs* (1970), in which broad ribbons of steel become meditations on the unlikely allure and domestic potentials of a material previously associated with machinery. In these and other works, *27 Rue de Grenelle* celebrates the mélanges of design and art, concerted innovation and respect for classic geometries that are defining elements of postwar French style.





Jean Dives. *Desk*, c. 1971
Stainless steel, wood, chromed metal base
33.86 H x 62.99 x 41.73 inches
86 H x 160 x 106 cm
For Maison et Jardin





Maria Pergay. *Fossil Lamp with shade*, 1975
Gilt and patinated bronze ammonites, steel shade
21.75 H x 13.5 x 6.63 inches
55.2 H x 34.3 x 16.8 cm
Stamped Maria Pergay pour Claude de Muzac and numbered



Maria Pergay. *Lampe Dragon*, 1974
Bronze and stainless steel
31.5 H inches
80 H cm



René Jean Caillette. *Pair of Capitonnées Chairs*, 1960
Foam, vinyl upholstery, chrome frame
31 H x 21 x 17.5 inches
78.7 H x 53.3 x 44.5 cm
Edition Charron





César. *Julius César*, 1972

Print with color pencil on paper

7.87 H x 4.92 inches

20 H x 12.5 cm

Signed, dated and titled upper right: "Julius César, 1972";
signed and dated on the reverse: "César, 1972"



César. *Combustion D'Allumettes*, c. 1970s

Matchbox, burnt matches and soot on cardboard

21.65 H x 15.35 inches

55 H x 39 cm

Signed twice, lower right: "César, nice"



César. Centaure, 1991

Ballpoint pen on paper

25.98 H x 21.65 inches

66 H x 55 cm

Signed and the artist's thumbprint, lower right: "César";
dated on the back: "nice, 1991"



César. Centaure, 1992

Oil and oilstick on cardboard

15.75 H x 12.2 inches

40 H x 31 cm

Signed twice, lower right: "César";
dated on the back: "21 mars 92"



César. *Untitled*, 1989

Ballpoint pen, gold felt-tip pen and oil on cardboard
12.99 H x 16.14 inches
33 H x 41 cm
Signed and the artist's thumbprint, lower right:
"César"



César. *Untitled*, 1970

Compressed metal
24 H x 15 x 9 inches
61 H x 38.1 x 22.9 cm
Signed and dated



César. *Untitled*, n.d.

Ballpoint pen, oil, paper and wood on cardboard
12.8 H x 10.63 inches
32.5 H x 27 cm
Signed, lower right: "César, nice"



René Jean Caillette. *Sofa*, 1966
Lacquered molded plywood, leather cushions
35.63 H x 53.15 x 35.43 inches
90.5 H x 135 x 90 cm
Unique work



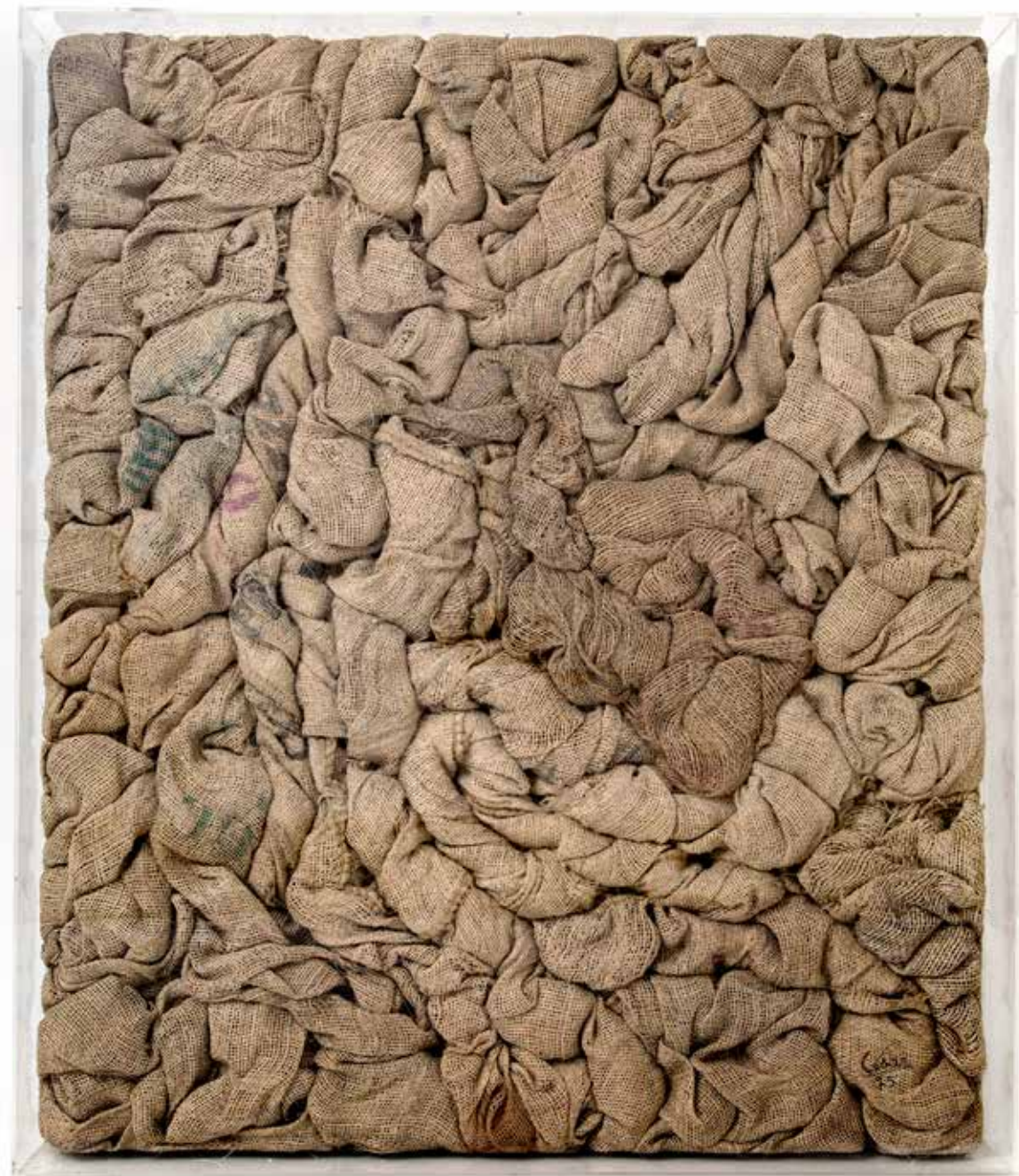
César. *Petite plaque No. 1*, 1989

Resin on panel

26.57 H x 18.9 x 2.56 inches

67.5 H x 48 x 6.5 cm

Signed and dated, lower right: "César, 89"; numbered, lower left: "E.A."



César. *Compression*, 1975
Plexiglas box and burlap
56.5 H x 48.43 x 8.27 inches
143.5 H x 123 x 21 cm
Signed, and dated '75, lower right



César. *Compression murale*, c. 1975

Tow on panel in Plexiglas box
33.5 H x 26 x 6 inches
122 H x 99.5 x 20 cm
Signed and dedicated, on the back: "César, Mr. Ferreo, mai"



César. *Tour Eiffel*, 1976

Metal Eiffel Tower in laminated gauze
painted on panel
5.91 H x 4.33 inches
15 H x 11 cm
Signed and dated



Maria Pergay. *Pair of Lounge Chairs*, 1970
Stainless steel with foam and leather cushions
23.75 H x 26 x 31.5 inches
60.35 H x 66.04 x 80.01 cm



Michel Boyer. *Screen Lamp*, 1975
Gilded brass, opaline glass
24.02 H x 15.75 x 11.77 inches
61 H x 40 x 29.9 cm
Edition Verre Lumière



Philippe Hiquily. *Table*, 1966

Steel base with glass top

Base: 27.56 H x 47.24 x 47.24 inches

70 H x 120 x 120 cm

Top: 52 x 40 inches

132 x 102 cm

Edition Galerie Lacloche



Claude Lalanne. *Grains de Café Chair*, 1965
Steel, brass, leather
32.28 H x 15.35 x 15.35 inches
82 H x 39 x 39 cm
Marked CL 84





Francois Arnal - Atelier A

Lamp, c. 1970
3 opaline glass bowls, pine
5.75 H x 15.75 x 15.75 inches
40 H x 40 x 40cm
Signed "Arnal"



Francois Arnal - Atelier A

Ghost Lamp, 1970
Fiber, resin
11.8 H x 11.8 x 11.8 inches
30 H x 30 x 30 cm



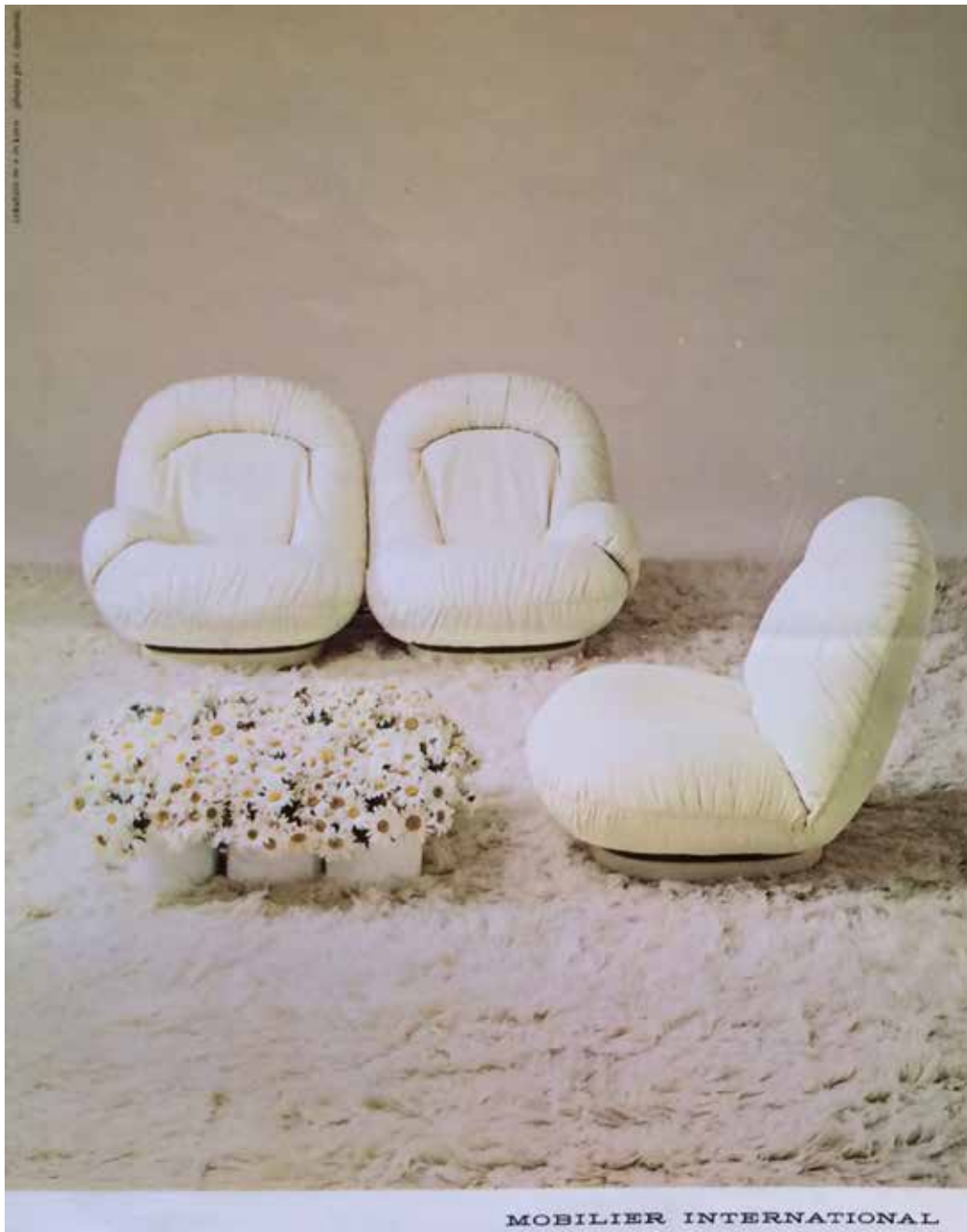
Francois Arnal - Atelier A

Elice Console, 1968

Smoked Plexiglas

27.17 H x 48.43 x 23.62 inches

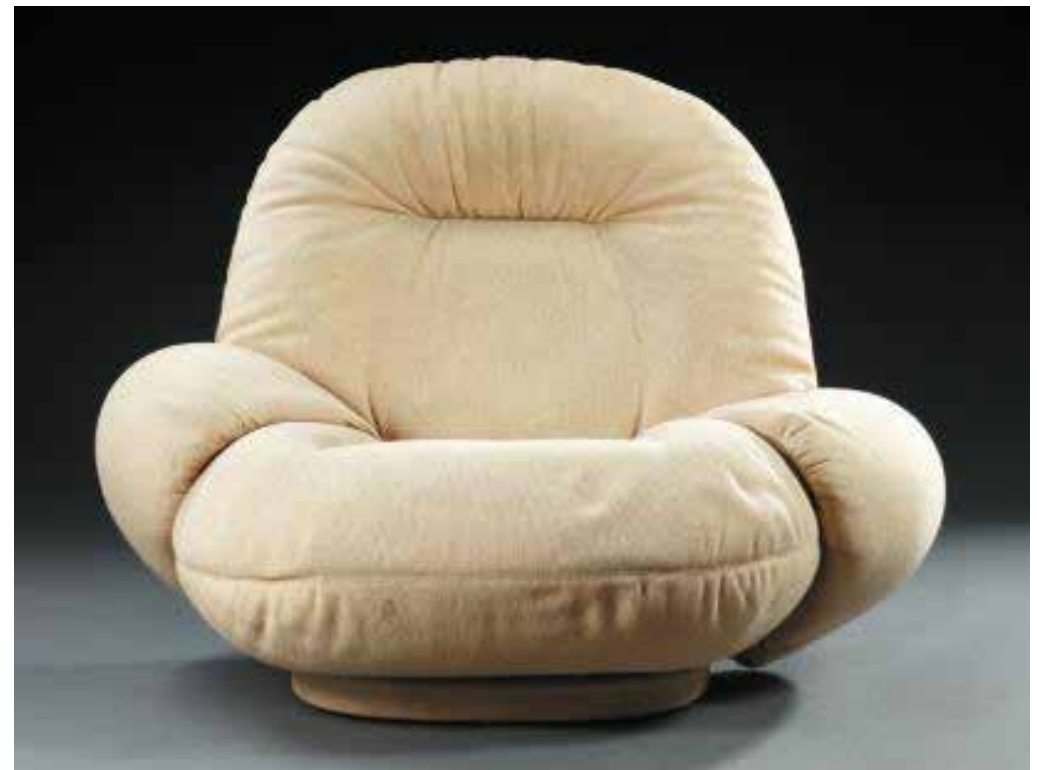
69 H x 123 x 60 cm



MOBILIER INTERNATIONAL

Pierre Paulin. *Pacha High Back Chair*, 1975
Structure in molded plywood with foam stuffing, fabric
32.28 H x 31.5 x 36.61 inches
82 H x 80 x 93cm
Edition Mobilier International

Pierre Paulin. *Pacha High Back Armchair*, 1975
Structure in molded plywood with foam stuffing, fabric
32.28 H x 37.01 x 36.61 inches
82 H x 94 x 93 cm
Edition Mobilier International





Pierre Paulin *Élysée Bookcase*, 1971
Smoked Altuglas, steel, wengé base
60.24 H x 68.5 x 14.57 inches
153 H x 174 x 37 cm
Signed "Paul"



Maria Pergay. *Table Marronnier*, 2015
Stainless steel with inlaid tree slice, hand sculpted
bronze
13.78 H x 43.31 inches
35 H x 110 cm
Edition 1 of 8, with 4 APs





ABOUT DEMISCH DANANT

Demisch Danant was founded in 2005 by Suzanne Demisch and Stephane Danant. The gallery specializes in twentieth century French design with an emphasis on the late 1950s through the 1970s and represents the work of Maria Pergay, Pierre Paulin, Joseph André Motte, Pierre Guariche, Michel Boyer, Philippon & Lecoq, and René Jean Caillette. Curated exhibitions on historical work are presented within environments that reference architecture and interiors of the era.

The gallery also features exhibitions concerning the intersection of architecture, design and art, including the work of Sheila Hicks, Felice Varini, Krijn de Koning.

Demisch Danant is dedicated to research and scholarship on French design and has authored and published monographs including, *Antoine Philippon and Jacqueline Lecoq* and *Maria Pergay: Complete Works 1957-2010*. Current projects include a comprehensive monograph on seminal designer Joseph André Motte.

For more information, please visit our website.

**30 WEST 12th St NEW YORK NY 10011 T: +1 212 989 5750 F: +1 212 989 5730
INFO@DEMISCHDANANT.COM WWW.DEMISCHDANANT.COM**