

Design Miami/ 2017

DEMISCH DANANT

Design Miami/
December 5–10, 2017
Booth Go4

Pierre Paulin
Maria Pergay
Michel Boyer
Olivier Mourgue
Roger Fatus
Verre Lumiere



Pierre Paulin

F286 Multimo Seven-seater Sofa, 1969
Stainless steel structure, foam stuffing,
fabric, wood base
27.5 H x 99 x 46 inches
69.9 H x 251.5 x 116.8 cm
Edition Artifort. Signed with applied
manufacturer's label to underside.



Pierre Paulin

Pair of Pacha Chairs, Low Back, 1975
Structure in molded plywood, foam
stuffing, fabric
26.38 H x 34.65 x 34.25 inches
67 H x 88 x 87 cm
Edition Mobilier International



Pierre Paulin

Pacha Loveseat, Low Back, 1975
Structure in molded plywood, foam
stuffing, fabric
27 H x 75 x 35 inches
68.6 H x 190.5 x 88.9 cm
Edition Mobilier International



Pierre Paulin

Flower Table, 1968
Painted aluminum, smoked glass
28.75 H x 47.25 D inches
73 H x 120 D cm
Edition Mobilier International



Pierre Paulin

Élysée Floor Lamp, 1972
Lacquered metal
71.26 H x 11.81 inches
181 H x 30 cm
Edition Verre Lumiere



Maria Pergay
Cabinet Engrenage, 2016
 Brushed stainless steel façade; cabinet and interior drawers in lemon wood; base in brushed and polished brass; gears in Ti-black, Ti-blue and mirrored stainless steel
 55.2 H x 44.09 x 19.69 inches
 140.2 H x 112 x 50 cm
 Edition 1 of 8, with 4 APs



Maria Pergay
Pouf Colonne/Column Seat, 2012
 Stainless steel, oak
 18.6 H x 19.5 x 19.5 inches
 47.2 H x 49.5 x 49.5 cm
 Seat height: 13 inches (33 cm)
 Edition of 12



Michel Boyer
Brasilia Lamp (Large), 1974
 Polished steel base, linen shade
 43.31 H x 17.72 x 17.72 inches
 110 H x 45 x 45 cm
 Edition Verre Lumiere



Michel Boyer
Coffee Table, 1968
 Formica, wood
 13.78 H x 38.58 x 39.37 inches
 35 H x 98 x 100 cm
 Edition Rouve



Michel Boyer
Desk Lamp, 1968
 Chromed metal, flexible arm
 17.5 H x 17 x 4 inches
 44.5 H x 43.2 x 10.2 cm
 Edition Verre Lumiere



Michel Boyer
Screen Lamp, 1975
 Gilded brass, opaline glass
 24.02 H x 15.75 x 11.81 inches
 61 H x 40 x 30 cm
 Edition Verre Lumiere



Olivier Mourgue
Bouloum Lounge Chair, 1968
 Molded fiberglass, gelcoat
 26.5 H x 31.25 x 53 inches
 67.3 H x 79.4 x 134.6 cm
 Edition Airborne



Olivier Mourgue
Set of 4 chairs, 1966
 Chromed metal base, fabric upholstery
 31.5 H x 23.62 x 20.08 inches
 80 H x 60 x 51 cm
 Seat height: 18.5 inches (47 cm)
 Edition Airborne



Roger Fatus
Desk Commode, 1967
 Oregon pine, lacquered wood, Plexiglas
 28.54 H x 123.43 x 21.65 inches
 72.5 H x 313.5 x 55 cm
 Edition La Meridienne



Ben Swildens
Floor Lamp, 1967
 Chromed steel, articulated arm
 53.5 H x 47.5 inches
 136 H x 121 cm
 Edition Verre Lumiere



Verre Lumiere Studio
Table Lamp, 1969
Brushed nickel
16.54 H x 9.06 x 9.06 inches
42 H x 23 x 23 cm
Edition Verre Lumiere



Sabine Charoy
Lamp, 1981
Enameled metal, Plexiglas, compact fluorescent (CFL)
11.02 H x 3.94 x 3.94 inches
28 H x 10 x 10 cm
Edition Verre Lumiere



Ben Swildens
Egg Lamp, 1969
Opaline glass, lacquered metal pedestal
24.41 H x 16.54 D inches
62 H x 42 D cm
Edition Verre Lumiere



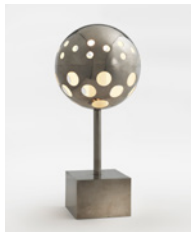
Pierre Soulié
Table Lamp, 1969
Chromed metal, articulated arm
23.62 H x 15.75 D inches
60 H x 40 D cm
Edition Verre Lumiere



Ben Swildens
Table Lamp, c. 1970s
Lacquered metal, opaline glass
10.24 H x 9.84 x 9.84 inches
26 H x 25 x 25 cm
Edition Verre Lumiere



Jean-Pierre Vitrac
Eventail Lamp, 1972
Chromed metal, opaline glass
11.81 H x 31.5 D inches
30 H x 80 D cm
Edition Verre Lumiere



Sabine Charoy
Table Lamp, 1969
Chromed brass
13.78 H x 7.09 inches
35 H x 18 cm
Edition Verre Lumiere



Piero Menichetti
Tumbo Lamp, 1973
Painted cast aluminum, polycarbonate shade
24.41 H x 17.72 x 9.84 inches
62 H x 45 x 25 cm
Edition Verre Lumiere



Sabine Charoy
Lamp, 1981
Enameled metal, Plexiglas, compact fluorescent (CFL)
11.02 H x 3.94 x 3.94 inches
28 H x 10 x 10 cm
Edition Verre Lumiere



César
Compression of Crystal, 1994
Glass crystal
16.93 H x 8.46 x 7.28 inches
43 H x 21.5 x 18.5 cm
Unique work. Signed center left.



Jacques Dumond

Table, c. 1970

Palissander veneer on top of solid wood, stainless steel
28.74 H x 78.74 x 31.5 inches
73 H x 200 x 80 cm
Unique work



François Français

Chair, 1967

Plexiglas
40.16 H x 16.54 x 20.47 inches
102 H x 42 x 52 cm
Seat height: 16.93 inches (43 cm)
Edition MPS



Étienne Fermigier

F170 Table Lamp, c. 1965

Aluminum, Perspex lampshade
14.76 H x 16.14 x 8.27 inches
37.5 H x 41 x 21 cm
Edition Monix



Herbert Jacob Weinand

Rocket Table, 1986

Aluminum, glass
29.53 H x 23.62 x 23.62 inches
75 H x 60 x 60 cm



Pentagon Group

Casino Model 'DB' Chair, 1987

Steel, black vinyl
30.71 H x 21.06 x 22.05 inches
78 H x 53.5 x 56 cm

ABOUT DEMISCH DANANT

Demisch Danant was founded in 2005 by Suzanne Demisch and Stephane Danant. The gallery specializes in twentieth century French design with an emphasis on the late 1950s through the 1970s and represents the work of Maria Pergay, Pierre Paulin, Joseph-André Motte, Pierre Guariche, Michel Boyer, Antoine Philippon & Jacqueline Lecoq, and René-Jean Caillette. Curated exhibitions on historical work are presented within environments that reference architecture and interiors of the era.

The gallery also features exhibitions concerning the intersection of architecture, design and art, including the work of Sheila Hicks, Felice Varini, Krijn de Koning, and César.

Demisch Danant is dedicated to research and scholarship on French design and has authored and published monographs including *Antoine Philippon and Jacqueline Lecoq* and *Maria Pergay: Complete Works 1957-2010*. Current projects include a comprehensive monograph on seminal designer Joseph-André Motte and a new book about the architectural commission works of artist Sheila Hicks.

DEMISCH DANANT

30 W 12TH ST NEW YORK

+1 212 989 5750

INFO@DEMISCHDANANT.COM