



*the voice
of things*

january 24 -
february 23, 2019

DEMISCH DANANT

THE VOICE OF THINGS
JANUARY 24 – FEBRUARY 23, 2019

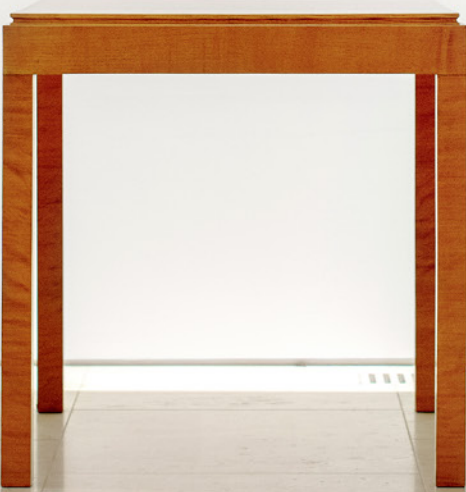
Demisch Danant is pleased to announce *The Voice of Things*, an exhibition about ways of seeing objects. What evokes one's reaction or response? Is it the symbolic value of the object or the significance within the designer's or artist's oeuvre; or, is it simply the assemblage of pieces themselves that is most captivating? Each collection is distinctive and the concert of 'voices' create another aesthetic experience depending where you place the works and how you approach them.

The exhibition takes its title from French writer Francis Ponge's book of poetry, *Le parti pris des choses*. Ponge was known for minutely examining everyday objects. "[Things] resonate all at once in a concert without monotony, and not without a certain delicacy."

This exhibition examines how different 'scenes' or 'works' provoke or inform when presented in different contexts, settings, and groupings. The finishes, materials, and palettes play a significant role too. A salon-style installation presents César's works on paper. Together, one can glimpse César's intention or process developed over time; however, on their own the works portray a different story. In *The Voice of Things* a Sheila Hicks *Prayer Rug* (1978) is paired with an early *Navajo rug* (1920s); a Pierre Guariche *Daybed* (1955) sits next to Jacques Dumond *Game Table* (1948). Objects of a collection can co-exist in random ensembles or calculated patterns; the placement is a delicate balance.





























Pierre Guariche/ A.R.P.

Daybed, 1955
Ash, metal, foam, fabric
21.26 H x 91.73 x 33.66 inches
54 H x 233 x 85.5 cm
seat height: 15.75 inches (40 cm)
Edition Les Huchers-Minvielle



Pierre Guariche

G1 Wall Lamp, 1951
Black lacquered metal, brushed brass
47.24 H x 55.12 x 31.5 inches
120 H x 140 x 80 cm
Edition Disderot



Sheila Hicks

Button Hole, 1984
Linen
9.5 H x 5.75 inches
24.1 H x 14.6 cm
Framed: 16.9 H x 11 inches
(43 H x 28 cm)



Pierre Guariche

G5 Clip Lamp, 1952
Black painted metal, brass with
"gun barrel" patina
16.54 H x 22.83 x 4.72 inches
42 H x 58 x 12 cm
Edition Disderot



Jacques Dumond

Low Table, c. 1966
Cherry wood, original glass top
7.87 H x 31.5 x 31.5 inches
20 H x 80 x 80 cm



Jacques Dumond

Pair of Oak Bridge Chairs, 1938
Oak, foam, fabric
31.5 H x 23.62 x 23 inches
80 H x 60 x 58.4 cm
Seat height: 18.5 inches (47 cm)



Maison Myrbor

French Art Deco Rug, c. 1925
Wool pile
56.4 x 111.6 inches
143.3 x 283.5 cm
Stitched on reverse "MYRBOR"



Jacques Dumond

Game Table, c. 1951
Oak, suede
30.12 H x 29.53 x 29.53 inches
76.5 H x 75 x 75 cm



Pierre Guariche

Prefacto Armchair, 1951
White tubular painted metal frame,
wood armrests, foam, upholstery
37.5 H x 27.5 x 32 inches
95.3 H x 69.9 x 81.3 cm
Seat height: 17.5 inches (44.5 cm)
Arm height: 23.5 inches (59.7 cm)
Edition Airborne



Leo Manso

Abstract Composition, c. 1970s
Oil and paper collage on artist's board
mounted on canvasboard
17.25 H x 22 inches
43.8 H x 55.9 cm
Framed: 24 H x 28.5 inches
(61 H x 72.3 cm)
Signed "Manso (II)"



Jacques Dumond

Display Console, 1952
Avodiré wood, grey lacquered metal
34.65 H x 41.73 x 15.75 inches
88 H x 106 x 40 cm
Depth open: 31.25 inches (79.4 cm)



César

Julius César, 1972
Collage
8 H x 5 inches (20.3 H x 12.7 cm)
Framed: 13.7 H x 10.5 x 1 inches
(34.7 H x 26.7 x 2.5 cm)
Signed, dated and titled upper right:
"Julius César, 1972"
Signed and dated on verso: "César, 1972"



Sheila Hicks

Galets, c. 1999
Wool
3.25 H x 5.51 D inches (8.255 H x 14 D cm)
2.25 H x 3.54 D inches (5.715 H x 9 D cm)
1.5 H x 3.74 D inches (3.81 H x 9.5 D cm)



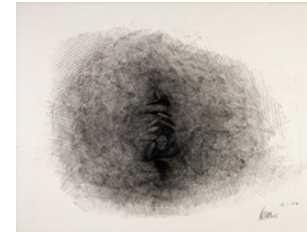
César

Arrachage, 1960
India ink on paper
27.17 H x 19.69 inches (69 H x 50 cm)
Framed: 33.3 H x 27.4 inches
(84.5 H x 69.7 cm)
Signed lower right corner: "César"
Dated upper right corner: "1960"



Arman

Une Empreinte de Glace, 1960
Oil on canvas
29.13 H x 22.44 inches
74 H x 57 cm
Framed: 37 H x 29.75 x 2.5 inches
(94 H x 75.6 x 6.4 cm)
Signed and dated lower right



César

Untitled, 1960
India ink on paper
22.8 H x 30 inches (57.9 H x 76.2 cm)
Framed: 27.56 H x 34.65 inches
(70 H x 88 cm)
Signed and dated lower right:
"César 18.1.1960"



César

Untitled, n.d.
Ballpoint pen, oil, paper and wood on
cardboard
12.8 H x 10.63 inches
32.5 H x 27 cm
Framed: 17.5 H x 14.4 inches (44.5 H x 36.5cm)
Signed lower right: "César, nice"



César

Autoportrait de Profil, c. 1980
Pencil and oil on canvas
Framed Dimensions:
13.58 H x 10.43 inches (34.5 H x 26.5 cm)
Framed: 23.3 H x 19.6 x 1.6 inches
(59 H x 49.8 x 4 cm)
Signed lower right: "César"



César

Bonne Année, 1973
Oil, metal collage on cardboard
8.62 H x 5.24 inches
21.9 H x 13.3 cm
Framed: 13.2 H x 10 x 1 inches
(33.5 H x 25.5 x 2.5 cm)
Titled and dated lower left: "Bonne Année 73"
Signed and dated lower right: "César, 1973"



Jacques Dumond
Secretary Console, 1952
 Avodiré wood, grey lacquered metal,
 leather sole
 34.65 H x 41.73 x 15.75 inches
 88 H x 106 x 40 cm
 Height open: 43.3 inches (110 cm)



Jacques Dumond
Sconce, 1958
 Painted metal
 7.28 H x 31.5 x 5.35 inches
 18.5 H x 80 x 13.6 cm
 Edition Disderot



French
Art Deco Rug, c. 1935
 Wool
 36 x 65 inches
 91.4 x 165 cm



Jacques Dumond
Wall Hanging Bookcase, c. 1966
 Aluminum, glass
 62.99 H x 34.65 x 9.84 inches
 160 H x 88 x 25 cm



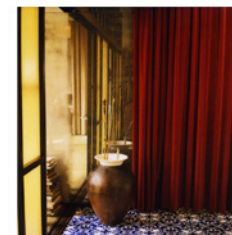
Jacques Dumond
Dining Table, 1964
 Stainless steel, glass
 27.56 H x 51.18 x 51.18 inches
 70 H x 130 x 130 cm



François Halard
Cy Twombly Studio #1, 1995
 Archival pigment print from negative
 19.88 x 19.88 inches
 50.5 x 50.5 cm
 Framed: 21.25 H x 21.25 inches
 (54 H x 54 cm)
 Edition of 7 + 3 AP



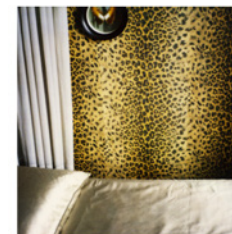
Pierre Paulin
Chaise à Palmette, 1981
 Lacquered wood, caned seat
 35.04 H x 22.44 x 16.93 inches
 89 H x 57 x 43 cm
 Seat height: 18 inches (45.72 cm)
 Limited Edition Pierre Paulin SARL
 Manufactured by Ségransan



François Halard
Carlo Mollino #10, 2004
 Polaroid
 3.5 H x 4.25 inches
 8.9 H x 10.8 cm
 Framed: 12 H x 10.75 inches
 (30.5 H x 27.3 cm)
 Unique work



Pierre Paulin
Amaranth Chair, 1981
 Amaranth wood, caned seat
 29.53 H x 21.65 x 17.32 inches
 75 H x 55 x 44 cm
 Limited Edition Pierre Paulin SARL
 Manufactured by Ségransan



François Halard
Carlo Mollino #11, 2004
 Polaroid
 3.5 x 4.25 inches
 8.9 x 10.8 cm
 Framed: 12 H x 10.75 inches
 (30.5 H x 27.3 cm)
 Unique work



Pierre Paulin
F165 Tulip Chair, 1971
 Lacquered cast aluminum, foam,
 fabric, plastic
 29.53 H x 27.95 x 19.69 inches
 75 H x 71 x 50 cm
 Seat height: 17 inches (43 cm)
 Edition Artifort



Michel Boyer
Screen Lamp, 1975
 Gilded brass, opaline glass
 24.02 H x 15.75 x 11.81 inches
 61 H x 40 x 30 cm
 Edition Verre Lumiere



Pierre Paulin
Table, 1973
 Etimoe African wood and chromed
 metal
 29.92 H x 62.99 x 31.5 inches
 76 H x 160 x 80 cm
 Edition Strafor



Marc Held
Lamp, 1983
 Brass
 25.98 H x 13.39 D inches
 66 H x 34 D cm
 Edited by Arlus



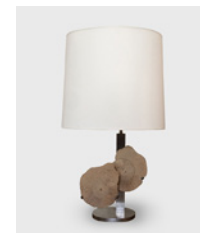
Pierre Folie
Pair of Chairs, 1972
 Stainless steel, suede
 27.95 H x 24.02 x 25.59 inches
 71 H x 61 x 65 cm
 Seat height: 13.78 inches (35 cm)
 Edition Charpentier



Jean-Michel Wilmotte
Wing Table, 1974
 Painted wood, smoked glass
 24.41 H x 23.03 x 17.72 inches
 62 H x 58.5 x 45 cm
 Edition Academy



César
Petite Plaque No. 1, 1989
 Resin on panel
 26.57 H x 18.9 x 2.56 inches
 67.5 H x 48 x 6.5 cm
 Framed: 33 H x 25 x 4 inches (84 H x 64 x 10 cm)
 Edition of 2 AP, with 21 total ed.
 Signed and dated, lower right: "César,89"
 Numbered, lower left: "E.A. 1/2"



Claude de Muzac
Lamp, c. 1970s
 Steel, ammonite fossils, fabric shade
 30 H x 17.5 x 11 inches
 76.2 H x 44.5 x 27.9 cm
 Shade: 14.5 H x 17.5 x 11 inches
 36.8 H x 44.5 x 27.9 cm
 Base: 29.5 H x 11.8 x 5 inches
 74.9 H x 30 x 12.7 cm



Maria Pergay
Lampe Fossile / Fossil Lamp, 1975
 Stainless steel, gilt and patinated
 bronze ammonites
 21.875 H x 13.375 x 6.625 inches
 55.6 H x 34 x 16.8 cm
 Stamped and numbered: "Maria Pergay
 pour Claude de Muzac, 12"



Claude de Muzac
Inca Head, c. 1970s
 Quartz, steel
 14.96 H x 3.74 x 5.51 inches
 38 H x 9.5 x 14 cm
 Base: 1.77 inches (4.5 cm)



A.R.P.
Low Table, 1956
Black painted metal, black Formica
14 H x 71 x 12 inches
35.6 H x 180.3 x 30.5 cm
Edition Steiner



Pierre Guariche/ A.R.P.
Dining table, 1957
Wood top, black lacquered metal
29.13 H x 55.12 x 33.46 inches
(94.9 inches extended)
74H x 140 x 85 cm
(240 cm extended)
Edition Les Huchers-Minvielle



Gustave Gautier
Armchair, 1954
Waxed oak, foam, fabric
34.25 H x 28.35 x 25.98 inches
87 H x 72 x 66 cm
Edition Rimard and Dumuid
Two available



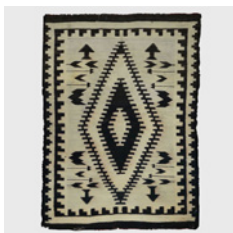
Jacques Dumond
Set of 6 Chairs, 1951
Oak, painted molded plywood
29.13 H x 15.94 x 16.54 inches
74 H x 40.5 x 42 cm
Seat height: 18 inches (46 cm)



Sheila Hicks
Prayer Rug, 1978
Wool
56.3 H x 20.47 inches
143 H x 52 cm
Dated artist's label on verso:
"March-April '78"



Jacques Dumond
Low Chair, 1954
Wood structure, foam, fabric, cherry wood legs
29.53 H x 23.23 x 28.74 inches
75 H x 59 x 73 cm
Seat height: 17.32 inches (44 cm)



Native American
Navajo Flat Weave Rug, c. 1920s
Cotton, wool pile
48 x 68.4 inches
121.9 x 173.7 cm



Jacques Dumond
Pair of Low Tables, c. 1955
Painted metal, glass
16.93 H x 31.5 x 21.65 inches
43 H x 80 x 55 cm



François Halard
Albert Frey #3, 1995
Archival pigment print from negative
19.75 H x 19.25 inches
50.2 H x 48.9 cm
Framed: 21 H x 20.5 inches
(53.3 H x 50.8 cm)
Edition of 7 + 3 AP



Sheila Hicks
PCP, 1988
Plaited silk on canvas
21 H x 21 x 1.75 inches
53.3 H x 53.3 x 4.4 cm
Titled, dated and signed on verso: "PCP
1988 / Sheila Hicks"



Pierre Paulin
Élysée Sofa, 1971
Metal tubular armature, foam, leather
28.35 H x 98.43 x 42.52 inches
72 H x 250 x 108 cm
Seat height: 14.5 inches (36.8 cm)



Sheila Hicks
Tapisserie, 1980
Cotton, silk, Plexiglas
12.99 H x 10.24 x 3.94 inches
33 H x 26 x 10 cm



Pierre Paulin
Spider Chair, c. 1966
Lacquered wood base, nylon rope,
foam, original vinyl
26 H x 41 x 32 inches
66 H x 104.1 x 81.3 cm
Seat height: 14 inches (35.5 cm)
Edition Artifort



Sheila Hicks
Blue Gros Point, c. 1990s
Linen
39.37 H x 66.93 inches
100 H x 170 cm



Paule Leleu
Art Deco Rug, c. 1920
Wool
87 D inches
221 D cm



François Arnal - Atelier A
Elice Console, 1968
Smoked Plexiglas
27.17 H x 49.21 x 23.62 inches
69 H x 125 x 60 cm



L'OEuf Centre d'Études
Lamp, c. 1970
Patinated brass, opaline shade
27.95 H x 14.96 D inches
71 H x 38 D cm
Edition Verre Lumiere, 10580 M



Pierre Paulin
Pair of F301 Chairs, 1964
Injected polyurethane, transparent
protective PVC, removable latex foam
cover, original leather
24.41 H x 31.89 x 27.56 inches
62 H x 81 x 70 cm
Seat height: 23 inches (59 cm)
Edition Artifort

ABOUT DEMISCH DANANT

Demisch Danant was founded in 2005 by Suzanne Demisch and Stephane Danant. The gallery specializes in twentieth-century French design with an emphasis on the late 1950s through the 1970s and represents the work of Maria Pergay, Pierre Paulin, Jacques Dumond, Joseph-André Motte, Pierre Guariche, Michel Boyer, Philippon & Lecoq and René-Jean Caillette. Curated exhibitions on historical work are presented within environments that reference architecture and interiors of the era.

The gallery also features exhibitions concerning the intersection of architecture, design and art, including the work of Sheila Hicks and César.

Demisch Danant is dedicated to research and scholarship on French design and has published and authored monographs including *Antoine Philippon and Jacqueline Lecoq*, *Maria Pergay: Complete Works 1957-2010*, *Maria Pergay by François Halard*, and *Maria Pergay: Sketch Book*. Current projects include a comprehensive monograph on seminal designer Joseph-André Motte and a new book about works by Sheila Hicks commissioned for architectural projects.

www.demischdanant.com

DEMISCH DANANT

30 W 12TH ST NEW YORK

+1 212 989 5750

INFO@DEMISCHDANANT.COM