

FOG DESIGN + ART



January 18
— January 21, 2024



Fort Mason Center
San Francisco

DEMISCH DANANT
FOG Design+Art 2024

Fort Mason Center, San Francisco | Booth 107
Preview day: January 17 | Public days: January 18–21

At this year's **FOG Design+Art**, Demisch Danant will present celebrated French design, alongside a curated selection of art works by French pop artist **Alain Jacquet** and internationally renowned– American-born Paris-based– contemporary artist **Sheila Hicks**.

Returning to the west coast will be **Made In Situ by Noé Duchaufour-Lawrance**, featuring two collections: *Burnt Cork* and *Azulejos*. *Burnt Cork* pays homage to Portuguese cork, transformed from fire-damaged remnants into gradient blocks, while *Azulejos* interprets coastal narratives through painted ceramic tiles of the Portuguese Azulejos tradition and undulating stand-alone wood screens reminiscent of the structures of boats.

Our booth will also showcase the exquisite lighting works of **Alain Carré** for **Verre Lumiere**, spotlighting Carré's design mastery with opaline glass during the 1980s; as well as **Bernard Govin's** *Diabolo Set of 3 Chairs with Low Table*, an impressive modular set that exemplifies his late 70s expert fusion of hard and soft forms.

Another fair highlight will be **Pierre Paulin's** influential yet lesser-known 1980s works, including selections from *Léna* ('85) and late 80s Baker collections. Notably, it will include a conference table originally designed for the collection of French president Mitterrand and executed by Baker, along with chairs conceived for the prestigious Léna palace.

Demisch Danant will also introduce a selection of sculptures, vases, and bowls by Bulgarian-born French artist **Vassil Ivanoff**, the result of a recent gallery exchange with **Galerie Anne-Sophie Duval** in Paris.

Finally, an exceptionally rare version of **Maria Pergay's** iconic *Ring Chair*, c. 1968, featuring two rings, will be featured as a tribute to her legacy following her passing late last year. The chair was first acquired by artist **Claude de Muzac** directly from Maria Pergay, then becoming a cherished piece within the collection of Ann and Gordon Getty. Originally conceptualized by Pergay while peeling an orange, the *Ring Chair* of 1968 stands as one of her most iconic and prized creations.

Join us at **Booth 107** to explore these exceptional works, each encapsulating the creative spirit and innovative vision of these esteemed designers and artists.





Made In Situ by Noé Duchaufour-Lawrance

*Azulejos Panel I (French Coastline)
& Azulejos Panel II (Spanish Coastline)*

2023

Chestnut, Azulejos ceramic tiles, hand-painted by the artist

62.6 H x 98.43 x 38.98 inches

159 H x 250 x 99 cm

Unique, Signed by Noé Duchaufour-Lawrance



Made In Situ by Noé Duchaufour-Lawrance

Burnt Cork Coffee Table II, 2021

Untreated agglomerated cork

17.72 H x 62.99 x 21.65 inches

45 H x 160 x 55 cm

Edition 03

Stamped by Made in Situ

Numbered series







Burnt Cork Table II by Made In Situ by Noé Duchaufour-Lawrance.



Burnt Cork Stool by Made In Situ by Noé Duchaufour-Lawrance.

Made In Situ by Noé Duchaufour-Lawrance

Burnt Cork Stool, 2021

Untreated agglomerated cork

17.72 H x 16.54 x 15.75 inches

45 H x 42 x 40 cm

Edition 07

Stamped by Made in Situ

Numbered series



Made In Situ by Noé Duchaufour-Lawrance

Burnt Cork Chaise Longue, 2021

Untreated agglomerated cork

33.86 H x 70.08 x 24.02 inches

86 H x 178 x 61 cm

Edition 04

Stamped by Made in Situ

Numbered series





Made In Situ by Noé Duchaufour-Lawrance

Burnt Cork Lounge Chair, 2021

Untreated agglomerated cork

31.5 H x 32.28 x 25.59 inches

80 H x 82 x 65 cm

Edition 04

Stamped by Made in Situ

Numbered series









Pierre Paulin

My work is at the junction of technique and a bit of poetry.

—Pierre Paulin

Technique and aesthetics, industry and art, are intimately linked in Paulin's design process. Paulin developed a new vocabulary and method for architecture, which in fact derived from his furniture designs.

Pierre Paulin was a master at seating design. By 1967, Paulin had begun to focus on flexible worlds and gentle atmospheres for living and working environments. Paulin's work on space and his seat designs is intrinsically connected: a simple domestic object, a seat, is related to the space it inhabits, conveying the fact that the chairs and the room's architectural volumes are spaces experienced both from inside and outside, creating an enveloping structure for the body.



Léna Palace, France, 1985.

Pierre Paulin

Pair of Léna Armchairs, 1985/ 2023

Sycamore, wood, foam, fabric

40.75 H x 33.07 x 28.15 inches

103.5 H x 84 x 71.5 cm

Seat height: 16.5 inches (42 cm)

Édition Paulin, Paulin, Paulin

Numbered edition

Design commissioned by Mobilier National, 1985,
Salle Hypostyle du Conseil Économique et Social,
Palais de l'Éna, Paris.

Literature:

Geel, Catherine, et al. *Pierre Paulin: Designer*. Paris,
Archibooks, 2008, pp. 144-145. Print.







Pierre Paulin

Art Deco Dining Table, 1984

Birdseye maple, walnut

30 H x 121.25 x 50 inches

76.2 H x 308 x 127 cm

Edition Baker Furniture









Maria Pergay *Chaise Anneaux / Ring Chair*, 1968

Stainless steel does not forgive. It has authority, and it helps me not to make errors. But it also shines and glows; it hints at greater things.
— Maria Pergay

We are honored to showcase an exceptionally rare version of **Maria Pergay's** iconic *Ring Chair*, featuring two rings, will be featured as a tribute to her legacy following her passing late last year. The chair was first acquired by artist **Claude de Muzac** directly from Maria Pergay, then becoming a cherished piece within the collection of Ann and Gordon Getty. Originally conceptualized by Pergay while peeling an orange, the *Ring Chair* of 1968 stands as one of her most iconic and prized creations.



Maria Pergay

Chaise Anneaux / Two-Ring Chair, c. 1968

Stainless steel

27.56 H x 24.02 x 20.47 inches

70 H x 61 x 52 cm

Rare model in 2 rings

Provenance:

Claude de Muzac, Paris, acquired directly from the artist. c.1968.

Ann and Gordon Getty Collection



Uginox des Arts menagers
SAD, 1970



Jacques Grange

Floor Lamp, c. 1980s

Varnished brass, metal halogen

73.23 H x 11.81 x 11.81 inches

186 H x 30 x 30 cm

Edition Maison Meilleur for Yves Saint Laurent



Roset Catalogue, 1965

Michel Ducaroy

Pair of 459 Chairs, c. 1965

Palisander veneer, foam, fabric

25.59 H x 29.13 x 22.05 inches

65 H x 74 x 56 cm

Seat height: 11.4 inches (29 cm)

Edition Roset



Bernard Govin

Diabolo Set of 3 Chairs with Low Table, c. 1978

Wood, foam, fabric, formica

Chairs:

26.38 H x 27.56 x 33.07 inches

67 H x 70 x 84 cm

Low Table:

12.99 H x 33.46 x 20.87 inches

33 H x 85 x 53 cm

Edition Mobilier International







Pierre Guariche

Set of 9 Aquilon Tables, 1964

Teak, Formica

Each table:

7.09 H x 13.78 x 13.78 inches

18 H x 35 x 35 cm

Edition Les Huchers-Minvielle



Jean-Paul Barray

Bedside Table, c. 1968

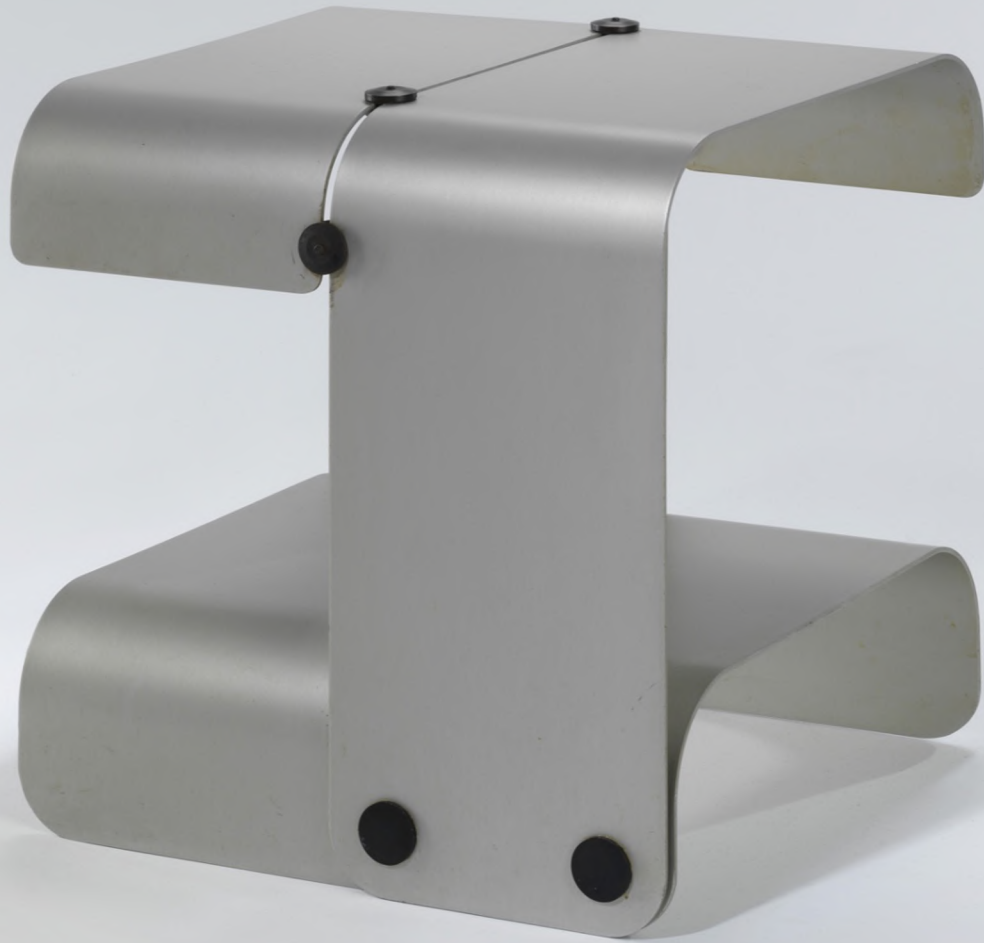
Aluminium

14.57 H x 13.39 x 14.17 inches

37 H x 34 x 36 cm

Edition E.C.F.I.





10642/0
10642
10642/1
10643



verre lumière
Création Alain Carré - 1983



Tour Chénouveau - Pont de Sévres
92516 Boulogne-Billancourt - Cedex



Verre Lumiere Catalog for Alain Carré 1983.

Alain Carré

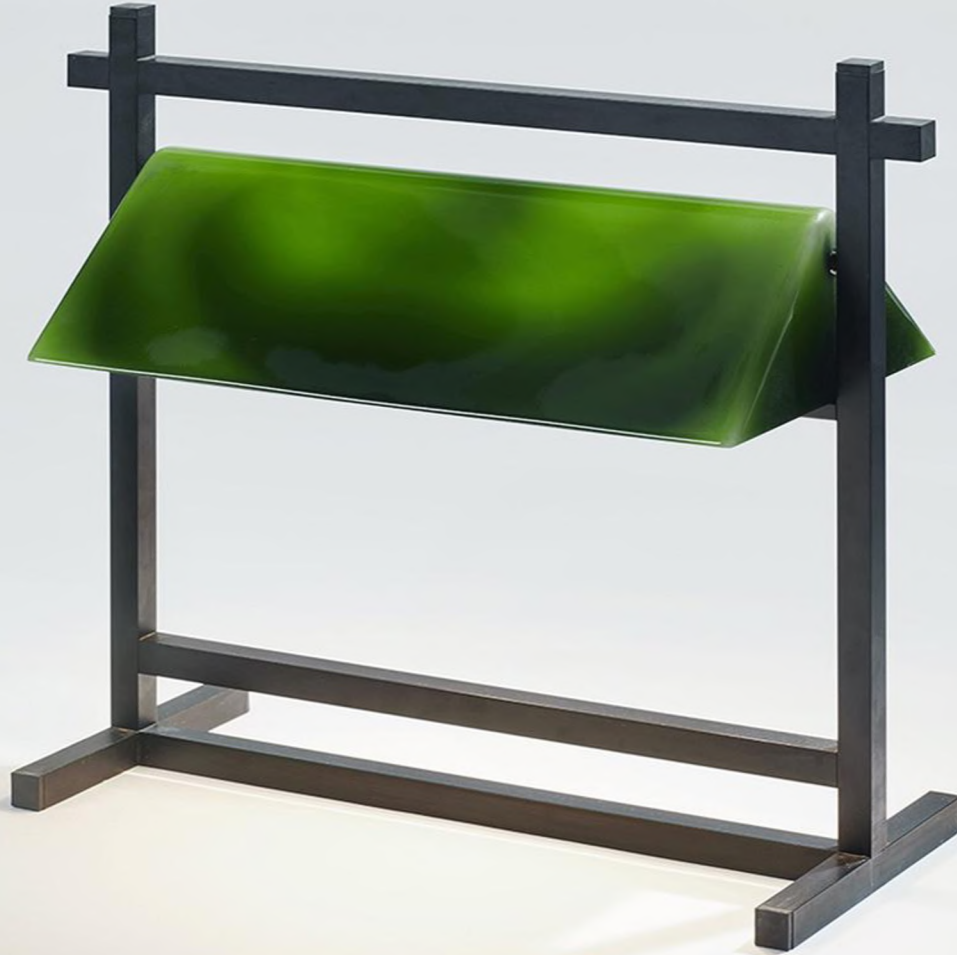
Desk Lamp, c. 1984

Painted metal, opaline glass

17.72 H x 21.85 x 10.24 inches

45 H x 55.5 x 26 cm

Edition Verre Lumiere, 10643



Alain Carré
Lamp, Model 10637, 1983
Opaline glass, glass
16.54 H x 12.2 D inches
42 H x 31 D cm
Edition Verre Lumiere





Alain Carré

Lamp, Model 10637, 1983

Opaline glass, glass

16.54 H x 12.2 D inches

42 H x 31 D cm

Edition Verre Lumiere

10637



Création Alain Carré - 1983

WF14





Alain Carré

Pair of Lamps, Model 10640, 1981

Frosted glass, lacquered metal

17.32 H x 13.78 D inches

44 H x 35 D cm

Edition Verre Lumiere



Alain Jacquet



Alain Jacquet

Otto Hahn, 1969

Acrylic on canvas

76.77 H x 51.18 x 1.57 inches

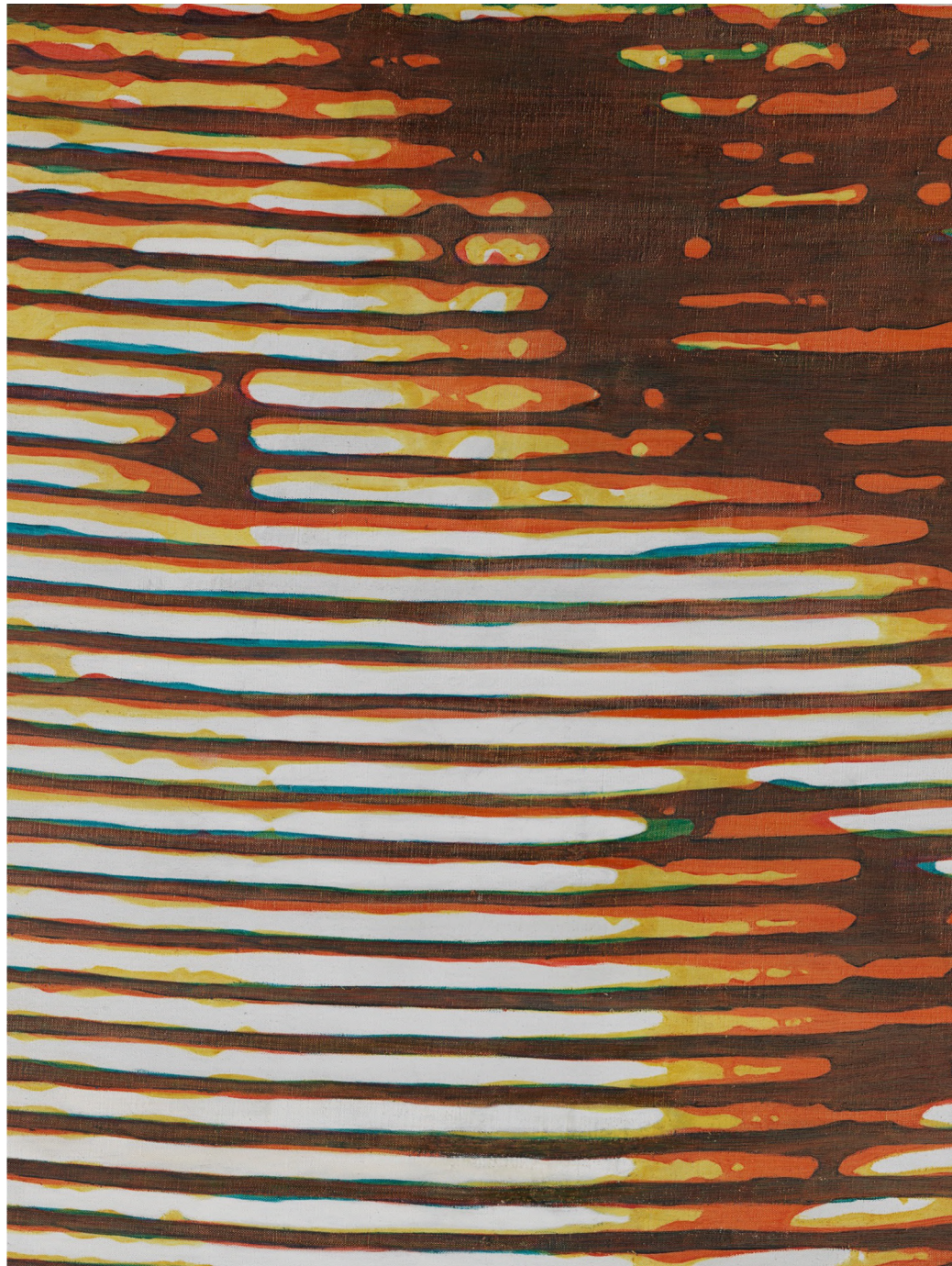
195 H x 130 x 4 cm

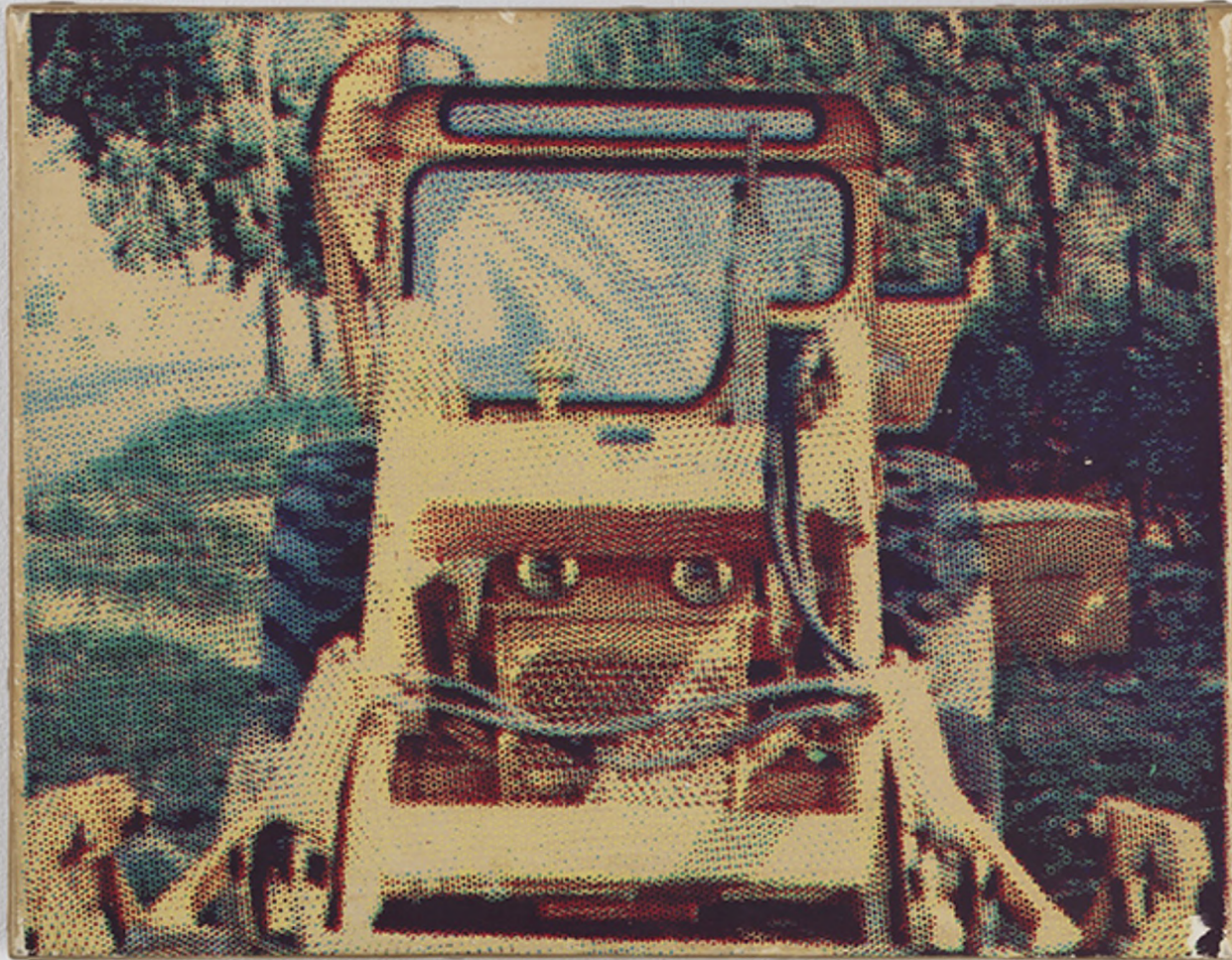
Framed: 77.6 H x 52 x 1.8 inches (197 H x 132
x 4.5 cm)

Signed and dated en verso

Provenance:

Galerie Der Spiegel, Cologne





Alain Jacquet
Bulldozer, 1967
Silkscreen on paper,
mounted on canvas
10.63 H x 13.58 inches
27 H x 34.5 cm

Provenance:
Private collection, Paris;
Galerie Daniel Templon,
Paris.



Alain Jacquet

Feu de Bengale, 1966

Silkscreen on vinyl

63.58 H x 44.69 inches

161.5 H x 113.5 cm

Signed and dated en verso

Provenance:

Galerie Daniel Varenne



Eugène Leroy



Eugène Leroy

Anne Mie, c. 1980

Watercolor, pastel and gouache on paper

Framed:

42.52 H x 29.53 x 1.57 inches

108 H x 75 x 4 cm

Image: 42.1 H x 29.1 inches (107 H x 74 cm)

Certificate of authenticity available.

Provenance:

Private collection, Roubaix



Sheila Hicks

Sheila Hicks

Evolving Tapestry, 1987

Natural and bleached linen, polished red
cotton

20 H x 72 x 16 inches

50.8 H x 182.9 x 40.6 cm

Provenance:

Anonymous collection, New York

Exhibited:

Sheila Hicks: Off Grid. 7 Apr. - 25 Sep. 2022,
The Hepworth Wakefield, West Yorkshire, UK.







Sheila Hicks

Untitled, c. 1968-69

Linen

89 H x 60 inches

226.1 H x 152.4 cm

Hand-woven at Taller Artesanal Huaquén, Chile

Provenance:

Collection of Maggie Brenner, USA

Purchased from the artist, 1968

Sheila Hicks

PCP, 1988

Twisted linen on canvas

21 H x 21 x 1.75 inches

53.3 H x 53.3 x 4.4 cm

Titled, dated and signed on verso

"PCP 1988 / Sheila Hicks"

Provenance:

Charles Seigny and Yves Vidal, Paris





Sheila Hicks

Cluny, 2008

Silk, woven gold thread, synthetic metallic thread,
wool

9.41 H x 5.39 inches

23.9 H x 13.7 cm

Signed, dated, and titled en verso "Sheila Hicks 2008,
Paris"

Provenance:

Davis & Langdale Company, Inc., New York

The Estates of a Prominent French-American Couple



Sheila Hicks

Pozas de Atzala, c. 1971

Wool

9.6 H x 8.25 inches

24.4 H x 21 cm

Provenance:

Gifted to Jan Schlubach by the artist
c. 1971;

Inherited by Roland Mabile, 2006;

Inherited by Itaka Martignoni, 2021.



Sheila Hicks

J. K. (Jacqueline Klugman), 2008

Woven silk, linen

9 H x 5.39 inches

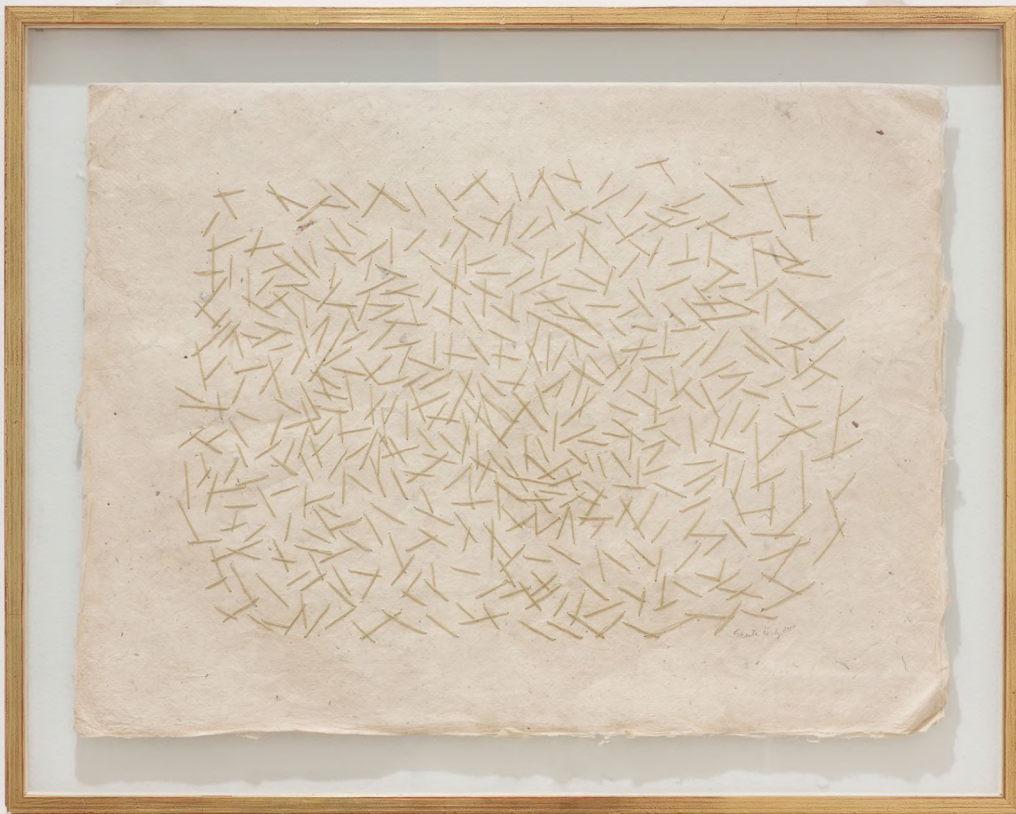
22.9 H x 13.7 cm

Signed and dated "Sheila Hicks 2008, Paris" and
inscribed "Marais" en verso

Provenance:

Davis & Langdale Company, Inc., New York

The Estates of a Prominent French-American Couple



Sheila Hicks

Threads Drawing, 2000

Paper, linen

14.75 H x 19.75 inches

37.5 H x 50.2 cm

Framed: 18.5 H x 23 inches (47 H x 58.5 cm)

Signed and dated "Sheila Hicks, 2000"



Sheila Hicks

Threads Drawing (Battle of Lexington III), 1998

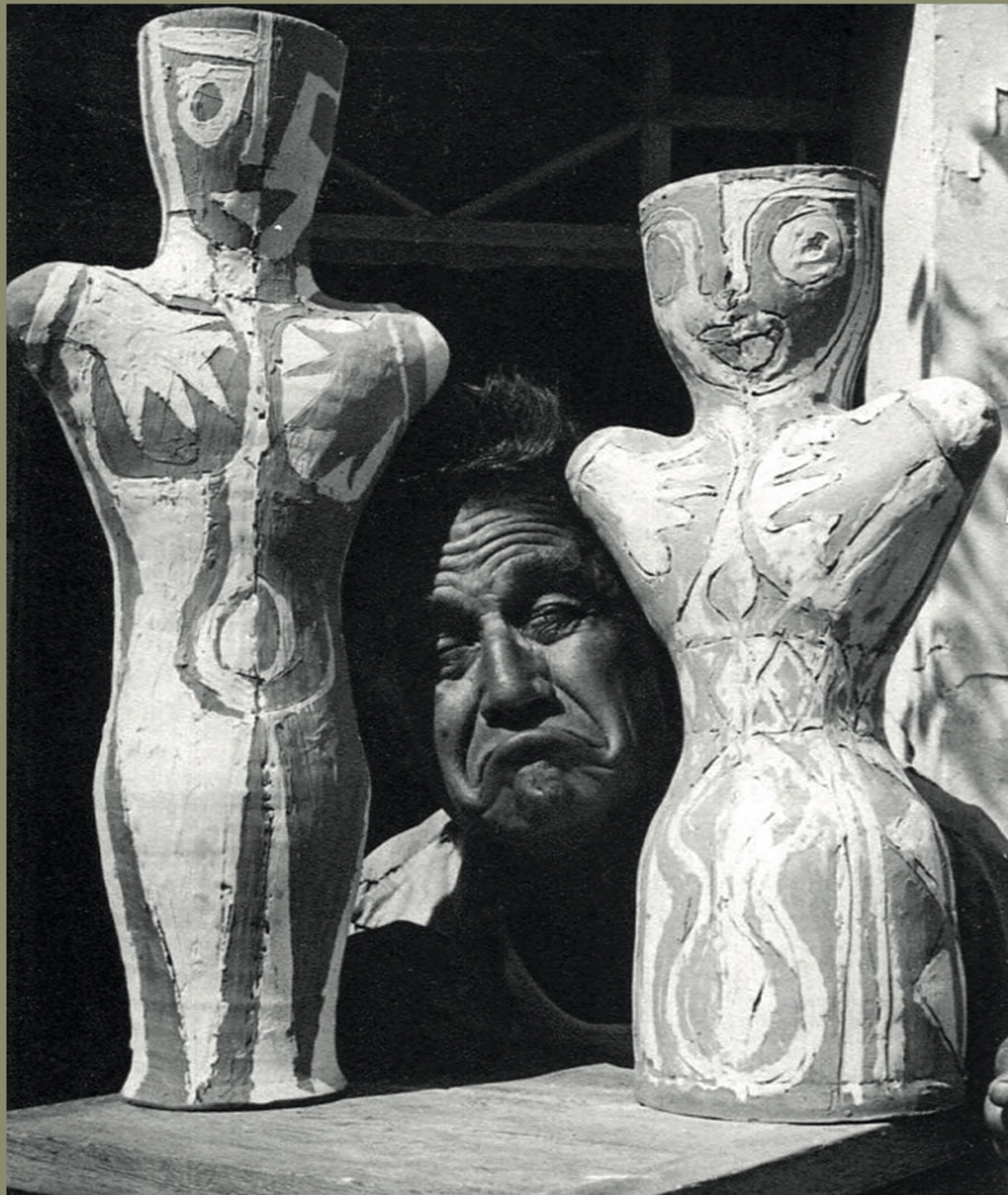
Paper, linen

14.17 H x 19.29 inches

36 H x 49 cm

Framed: 20.5 H x 25.25 inches (52 H x 64 cm)

Signed, titled and dated on back of frame



Vassil Ivanoff



Vassil Ivanoff

Anthropomorphic Vase

Incised stoneware with engobe

18.5 H inches

47 H cm

Signed under base

Literature:

Galerie Anne-Sophie Duval. *Vassil Ivanoff: céramiste - peintre - sculpteur: "un soleil de 1,300 °C"*. Paris, Editions Gourcuff-Gradenigo, 2022, p. 19. Print.



Vassil Ivanoff

Anthropomorphic Jar, 1968

Glazed stoneware, cord

15.75 H inches

40 H cm

Signed under base

Literature:

Galerie Anne-Sophie Duval. *Vassil Ivanoff: céramiste - peintre - sculpteur: "un soleil de 1,300 °C"*. Paris, Editions Gourcuff-Gradenigo, 2022, p. 33. Print.







Vassil Ivanoff

Cylindrical Vase

Stoneware with engobe

18.9 H inches, 48 H cm

Signed under base

Literature:

Galerie Anne-Sophie Duval. *Vassil Ivanoff: céramiste - peintre - sculpteur: "un soleil de 1,300 °C"*. Paris, Editions Gourcuff-Gradenigo, 2022, p. 54. Print.

Vassil Ivanoff

Dish on a Base

Stoneware with chamotte and
engobe

10.63 H x 11.81 inches

27 H x 30 cm

Signed under base

Literature:

Galerie Anne-Sophie Duval. *Vassil
Ivanoff: céramiste - peintre -
sculpteur: "un soleil de 1,300 °C".*
Paris, Editions Gourcuff-
Gradenigo, 2022, p. 115. Print.





Vassil Ivanoff

Anthropomorphic Vase

Stoneware with engobe

17.32 H inches

44 H cm

Signed under base

Literature:

Galerie Anne-Sophie Duval. *Vassil Ivanoff: céramiste - peintre - sculpteur: "un soleil de 1,300 °C"*. Paris, Editions Gourcuff-Gradenigo, 2022, p. 31. Print.

Vassil Ivanoff

Geometrical Construction

Stoneware with engobe

14.57 H x 7.09 inches

37 H x 18 cm

Signed under base

Literature:

Galerie Anne-Sophie Duval. *Vassil Ivanoff: céramiste - peintre - sculpteur: "un soleil de 1,300 °C"*. Paris, Editions Gourcuff-Gradenigo, 2022, p. 133. Print.







Vassil Ivanoff

Frog Bowl, c. 1957-60

Glazed stoneware

3.94 H x 4.33 inches

10 H x 11 cm

Signed under base

Literature:

Galerie Anne-Sophie Duval. *Vassil Ivanoff: céramiste - peintre - sculpteur: "un soleil de 1,300 °C"*. Paris, Editions Gourcuff-Gradenigo, 2022, p. 69. Print.

ABOUT DEMISCH DANANT

Demisch Danant was founded in 2005 by Suzanne Demisch and Stephane Danant. The gallery specializes in twentieth-century French design with an emphasis on the late 1950s through the 1970s and represents the work of Maria Pergay, Pierre Paulin, Jacques Dumond, Joseph-André Motte, Pierre Guariche, Michel Boyer, Antoine Philippon & Jacqueline Lecoq and René-Jean Caillette. Curated exhibitions on historical work are presented within environments that reference architecture and interiors of the era.

The gallery also features exhibitions concerning the intersection of architecture, design and art, including the work of Sheila Hicks and César.

Demisch Danant is dedicated to research and scholarship on French design and has published and authored monographs including *Antoine Philippon and Jacqueline Lecoq*, *Maria Pergay: Complete Works 1957-2010*, *Maria Pergay by François Halard*, and *Maria Pergay: Sketch Book*. Current projects include a comprehensive monograph on seminal designer Joseph-André Motte and a new book about works by Sheila Hicks commissioned for architectural projects.

DEMISCH DANANT
30 W 12th St
New York, NY 10011
T +1 212 989 5750
info@demischdanant.com
www.demischdanant.com