

TEFAF

New York 2024

Michel Boyer



Maria Pergay, Jacques Quinet,
Maxime Old, Serge Mansau,
Noé Duchaufour-Lawrance,
Alain Jacquet, Sheila Hicks,
Eugène Leroy, Vassil Ivanoff

May 9 – 14, 2024

Michel Boyer
Desk for Elie de Rothschild, 1970
& "Boudins" sofa, 1970

TEFAF New York
May 10—14, 2024
Booth #340

Of Note

An exhibition of rare and important works from the 1950s to today featuring Michel Boyer, Sheila Hicks, Alain Jacquet, Maria Pergay and more.

New York, New York – Demisch Danant is proud to participate in the tenth edition of TEFAF New York, taking place May 10 through May 14 at the historic Park Avenue Armory in Manhattan.

The gallery will showcase a wide selection of rare and important works from Sheila Hicks, Alain Jacquet, Vassil Ivanoff, Maria Pergay, Serge Mansau, Bernard Govin and more, featured alongside Michel Boyer's famed Rothschild Desk at the exhibition's center. Originally commissioned by Elie de Rothschild and designed for the Rothschild Bank on rue Laffitte in Paris, this highly influential piece – and the works that accompanied it for this landmarked commission – is widely regarded as a highlight of Boyer's career and a leading exemplar of French style in the 1970s.

Michel Boyer began his practice as a decorator and designer by specializing in office furniture, corporate offices, and banks, while employed by the architect Pierre Dufau. He designed contemporary furniture channeling the progressive postwar spirit and utilizing the materials of his era: stainless steel, laminate, fiberglass and lacquer. In 1965, Dufau entrusted Boyer to design the interiors for a building meant to temporarily house the Rothschild Bank. After revealing innovative designs for the temporary building, Boyer was commissioned to develop contemporary interiors for the final structure, which was designed by American architect Max Abramovitz, designer of Lincoln Center's Avery Fisher Hall in New York City. The Rothschild Bank building was completed in 1970, setting a new standard for refined, contemporary French style.

Elegantly understated yet strikingly significant, the desk itself has a makeup of walnut, leather, and brushed stainless steel. Sleek curved steel and the designer's deft interplay of solids and voids make this desk an iconic example of the aesthetic that established Boyer as an influential figure in postwar European design.

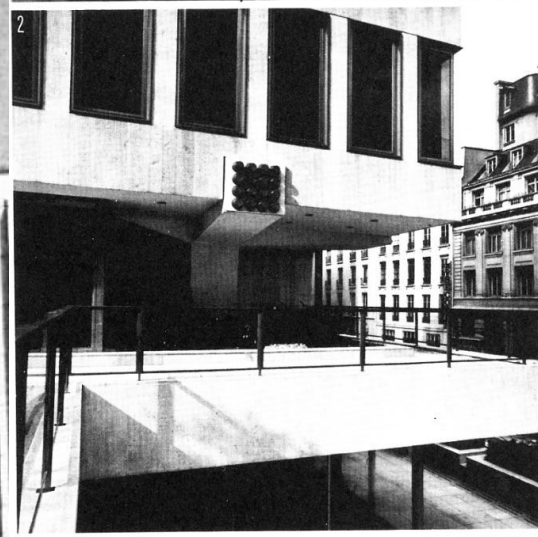
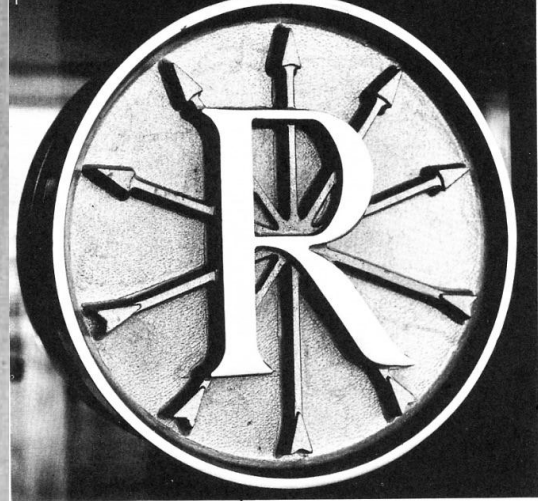
Boyer received many other significant commissions of the 1970s, including the Hotel PLM Saint-Jacques (1972), the French Embassy in Washington (1975) and that of Brasília (1975), for which he designed the lacquered steel and linen table lamp produced by Verre Lumiere also on view at TEFAF. He worked with fashion designers including Lanvin, Dior and Balmain, and some of his private clients included Elie de Rothschild, Liliane Bettencourt and Karim Aga Khan.

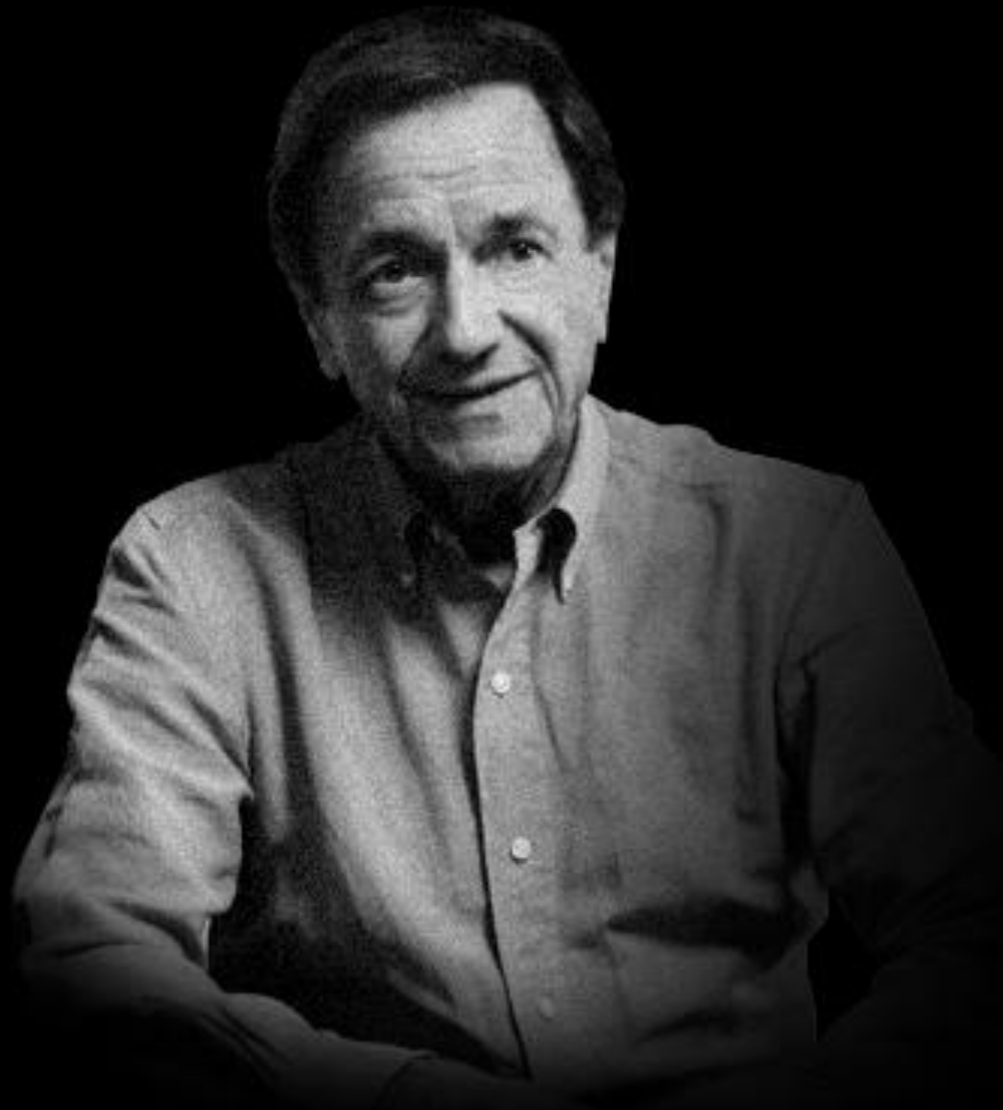
The exhibition will juxtapose the gallery's historic collection alongside contemporary designs from prolific French designer Noé Duchaufour-Lawrance and acclaimed American-born, Paris-based artist Sheila Hicks. Coincidentally, and as part of his collaboration with Boyer in 1970, Rothschild had also commissioned Hicks to make several architectural installations for the private salons in the bank. Also on display: sculptural ceramics by artist Vassil Ivanoff dating back to the early 1950s, multi-medium artworks by Eugène Leroy and Alain Jacquet, and lighting from Maurice Pré and Janette Laverrière.

Over the years, both as gallerists and collectors, Suzanne Demisch and Stéphane Danant have advocated for a humanistic and cultured approach to interiors, emphasizing the dialogues between pieces within a room and the stories they carry, as much as the individual value of each of them taken separately.

Visit Demisch Danant at TEFAF New York from May 10 to 14 at booth #340.

Rothschild Bank Building in Paris, Circa 1970





Michel Boyer

Michel Boyer

Desk, 1970

Brushed stainless steel, walnut, leather

29.13 H x 94.49 x 39.37 inches

74 H x 240 x 100 cm

Unique work

Provenance:

Designed for the office of Élie de Rothschild, Rothschild Bank, Paris.

\$150,000







Michel Boyer

Desk, 1970

Brushed stainless steel, walnut, leather

29.13 H x 94.49 x 39.37 inches

74 H x 240 x 100 cm

Unique work

Provenance:

Designed for the office of Élie de Rothschild, Rothschild Bank, Paris.

\$150,000



Michel Boyer's interior for the office of Élie de Rothschild, Rothschild Bank, Paris, 1970.

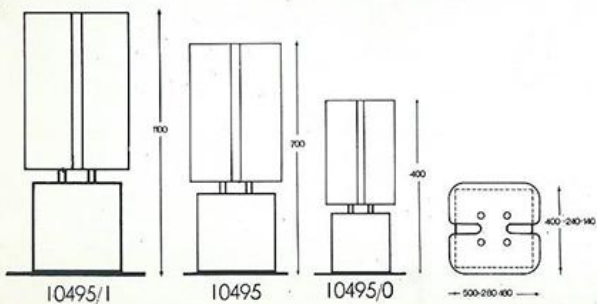
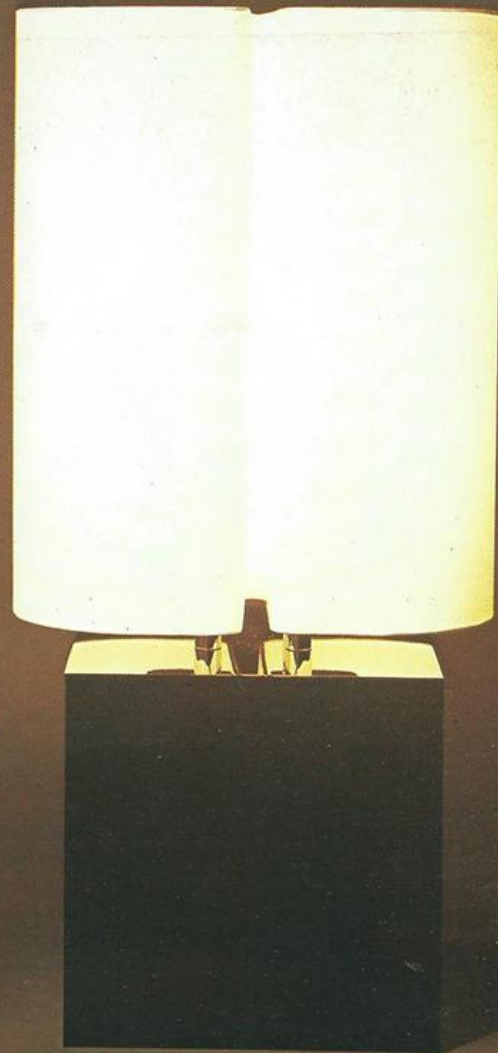
Gamme
Mobilier National.
Bureau de très
haute qualité.
Création M.Boyer.
Collection exclusive
de mobilier et sièges
contemporains
de série.
Architecture
intérieure.



Michel Boyer for catalogue Mobilier
National

tfm

Point de vente et exposition : 10 rue du Toul 75 Paris 12^e Téléphone 344.23.65 + 2 usines à Paris et Marcilly s/Seine



10495/0 - 10495 - 10495/1
création Michel Boyer

abat-jour en tissu diffusant
socle en acier laqué noir brillant

10495/0 : 4 lampes tube 40 watts (E 14)

10495 : 4 lampes standard 60 watts (E 27)

10495/1 : 4 lampes fluorescentes 20 watts
à allumage instantané



Michel Boyer

Brasília Lamp, 1974

Lacquered steel, linen shade

27.56 H x 11.02 x 11.02 inches

70 H x 28 x 28 cm

Literature:

Bloch-Champfort, Guy and Patrick Gavardin. *The decorators from the 60s and 70s*. Editions Norma, Paris, 2007. Similar model referenced and reproduced, p. 90-91. Print

Bony, Anne. *Furniture and Decor from the 70s*. Editions du Regard, Paris, 2005. Similar model referenced and reproduced, p.168. Print.

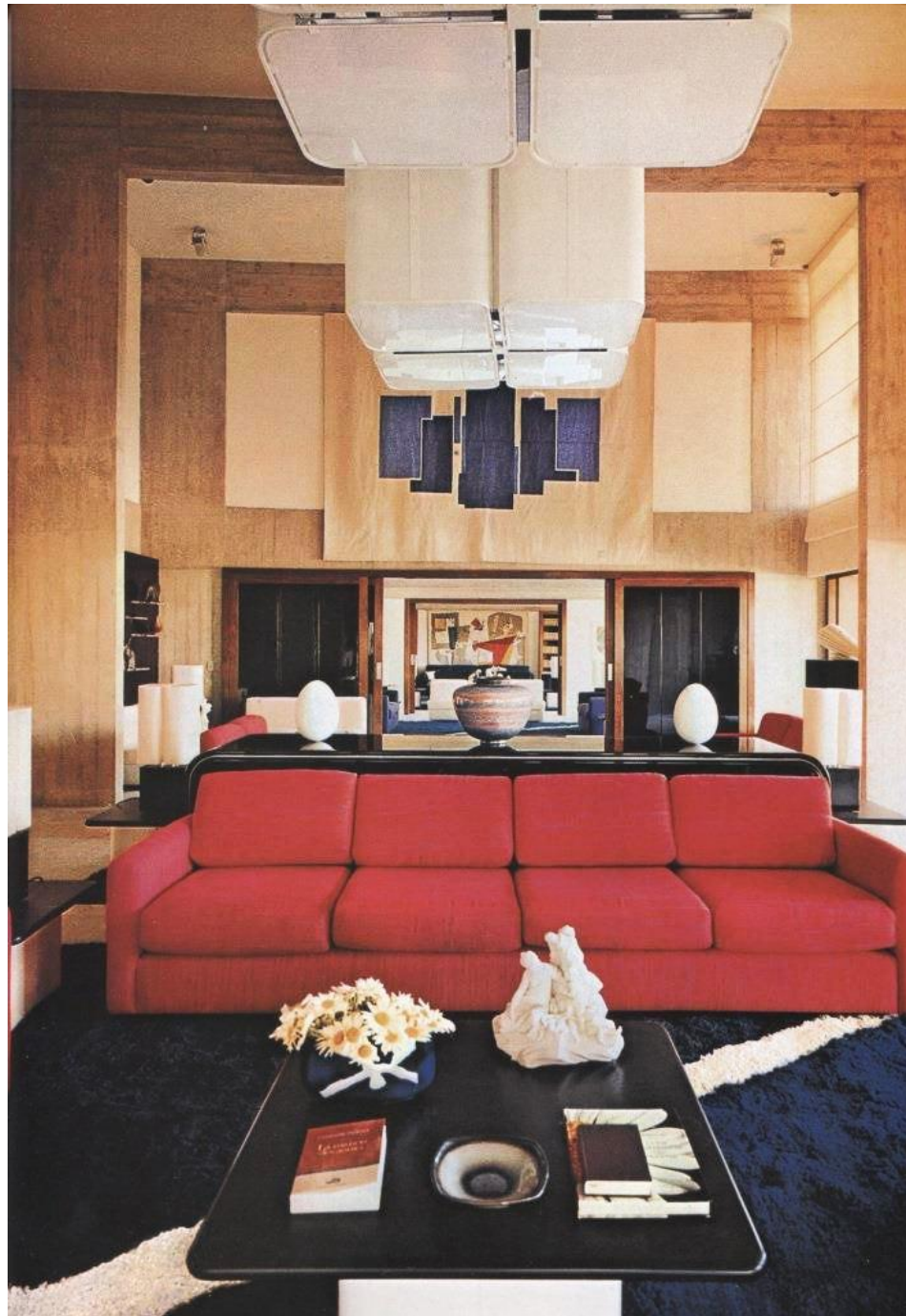
Powis, Eileen. Éditions NORMA, 2015. Similar example reproduced pp. 86-87. Print.

Provenance:

Private Commission, France Embassy in Brazil

\$18,000





Michel Boyer *Brasília Lamp*, 1974, French Embassy, Brazil

Desk, 1967 and Desk Chair, Model 3001 T8, 1964, Mobi Boom Catalogue, 1970.



Antoine Philippon and Jacqueline

Lecoq

'Confort' Desk Chair, Model 3001 T8,
1964

Cast aluminum, molded plywood,
veneer, foam, fabric

30.31 H x 24.8 x 25.59 inches

77 H x 63 x 65 cm

Seat height: 18.9 inches (48 cm)

Edition Les Huchers-Minvielle

Literature:

Forest, Dominique. *Mobi Boom :*

L'Explosion du Design en France

1945-1975. Paris, Les Arts

Décoratifs, 2010, Similar example
reproduced p. 160. Print.

Danant, Stéphane. *Antoine*

Philippon and Jacqueline Lecoq.

Translated by Elizabeth G. Heard,

New York, Demisch Danant, 2011,

Similar examples reproduced pp.

63-65. Print.

\$26,000





Michel Boyer's interior for an apartment at Place des Victoires Paris, 1973.



les créations de Michel
Boyer sont éditées par

ROUVE

68 rue Bonaparte
Paris 6 tel. 326.30.81





Michel Boyer

Sofa, 1970

Tubular chromed steel, foam, original leather

29.13 H x 62.99 x 35.83 inches

74 H x 160 x 91 cm

Edition Rouve

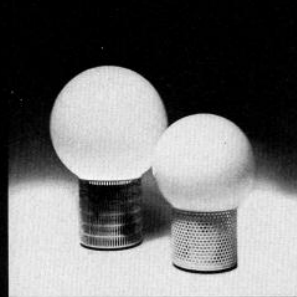
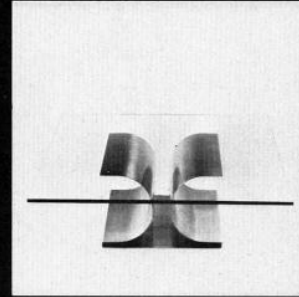
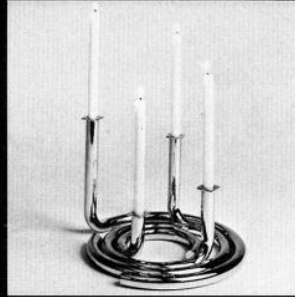
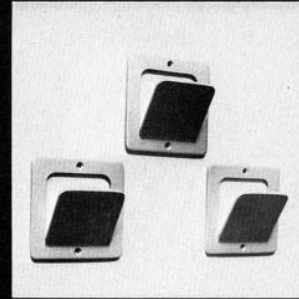
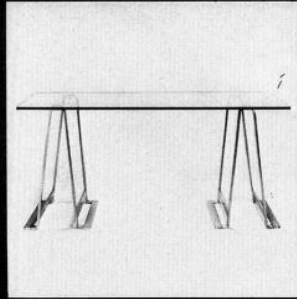
Literature:

Favardin, Patrick, and Guy Block-Champfort.

Decorators of the 60s-70s. Translated by Eileen Powis, Éditions NORMA, 2015. Similar example reproduced p. 93. Print.

Michel Boyer. Catalogue d'Exposition, Galerie Jousse Entreprise et Guillaume de Casson, Paris, 10 Jun.-19 Jul. 2003. Similar example reproduced, n.p. Print.

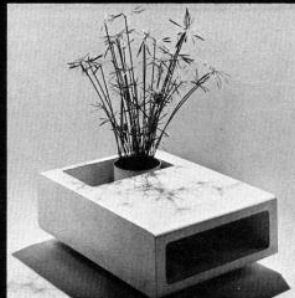
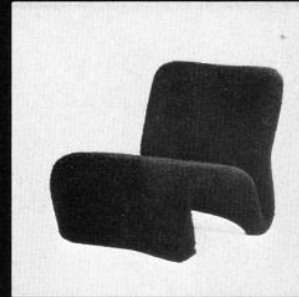
\$70,000



ROUVE
 68, rue Bonaparte
 Paris 6^e
 386.09.12 - 326.30.81
 Village Suisse
 54 bis, avenue
 de la Motte-Picquet
 Paris 15^e - 273.23.08



création Michel Boyer



ART FONCTIONNEL
 8, rue du Temple, 21 DIJON - 32.74.89

LA BOITE A MALICES
 22, rue Palais Grillet, 69 LYON 2^e - 37.83.16

CANEZIN
 63, rue de la Pomme, 31 TOULOUSE 01 - 22.25.84

CYBELE
 17, rue Haute-Seille, 57 METZ - 69.43.19

DOMUS Décoration
 27, rue Louis Barthou, 64 PAU - 27.78.70

FONCTION HABITAT
 Immeuble Le France, Rue de la Gare,
 73 CHAMBERY

TERZO
 523, rue Paradis, 13 MARSEILLE 8^e

Works by Michel Boyer in an advertisement by Rouve, c. 1970

Michel Boyer

Bougeoir, 1970

Chrome

8.7 H x 11 x 11 inches

22.1 x 27.9 x 27.9 cm

Edition Rouve

\$8,000



11

10589



11, quai De Dion Bouton
92800 Puteaux

Création Michel Boyer - 1981



Michel Boyer, Lamp Model 10589, 1981, Verre Lumiere Catalogue.

Michel Boyer

Lamp, Model 10589, 1981

Anodized and painted aluminum

25.98 H x 17.11 D inches

66 H x 43.5 D cm

Shade height: 9.06 inches (23 cm)

Edition Verre Lumiere

\$16,000







Sheila Hicks

Untitled, c. 1980

Linen, cotton

79 H x 18 x 18 inches

200.7 H x 45.7 x 45.7 cm

Provenance:

Collection of the artist.

\$175,000



Sheila Hicks

Cluny, 2008

Silk, woven gold thread, synthetic metallic thread, wool

9.41 H x 5.39 inches

23.9 H x 13.7 cm

Signed, dated, and titled en verso "Sheila Hicks 2008, Paris"

Provenance:

Davis & Langdale Company, Inc., New York

The Estates of a Prominent French-American Couple

\$40,000

Sheila Hicks

Do Not Disturb, c. 1980

French linen

10 x 8 x 4 inches

25.4 x 20.32 x 10.16 cm

Provenance:

Collection of the artist.

\$45,000





Sheila Hicks

J. K. (Jacqueline Klugman), 2008

Woven silk, linen

9 H x 5.39 inches

22.9 H x 13.7 cm

Signed and dated "Sheila Hicks 2008, Paris" and inscribed
"Marais" en verso

Provenance:

Davis & Langdale Company, Inc., New York

The Estates of a Prominent French-American Couple

\$40,000



Sheila Hicks

Pozas de Atzala, c. 1971

Wool

9.6 H x 8.25 inches

24.4 H x 21 cm

Provenance:

Gifted to Jan Schlubach by the artist
c. 1971;

Inherited by Roland Mabille, 2006;

Inherited by Itaka Martignoni, 2021.

\$42,000



Maria Pergay, 2013

Maria Pergay

Chevet Goutte A / Drop Chevet A (bedside table), single, 2008

Stainless steel, acajou

22.64 H x 22.05 x 15.75 inches

57.50 H x 56 x 40 cm

Edition AP of 12

Literature:

Illustrated in "Maria Pergay Complete Works 1957-2010" by Suzanne Demisch / Stephane Danant, page 258, numbered 153

\$35,000





Maria Pergay

Folded Chair, Model 933, c. 1975

Stainless steel

26.38 H x 23.62 x 31.89 inches

67 H x 60 x 81 cm

Provenance:

Private collection, acquired directly from the artist, c. 1975.

\$50,000









Alain Jacquet, Leo Castelli, and Roy Lichtenstein at the exhibition "Jacquet" at Galerie Iolas, New York, 1964

Alain Jacquet

Exposition Galerie Iolas, 1964

Silkscreen on thermoformed
plastic box with original frame

15 1/4 H x 22 1/2 x 6 1/4 inches

38.5 H x 57 x 16 cm

Signed and dated June '64

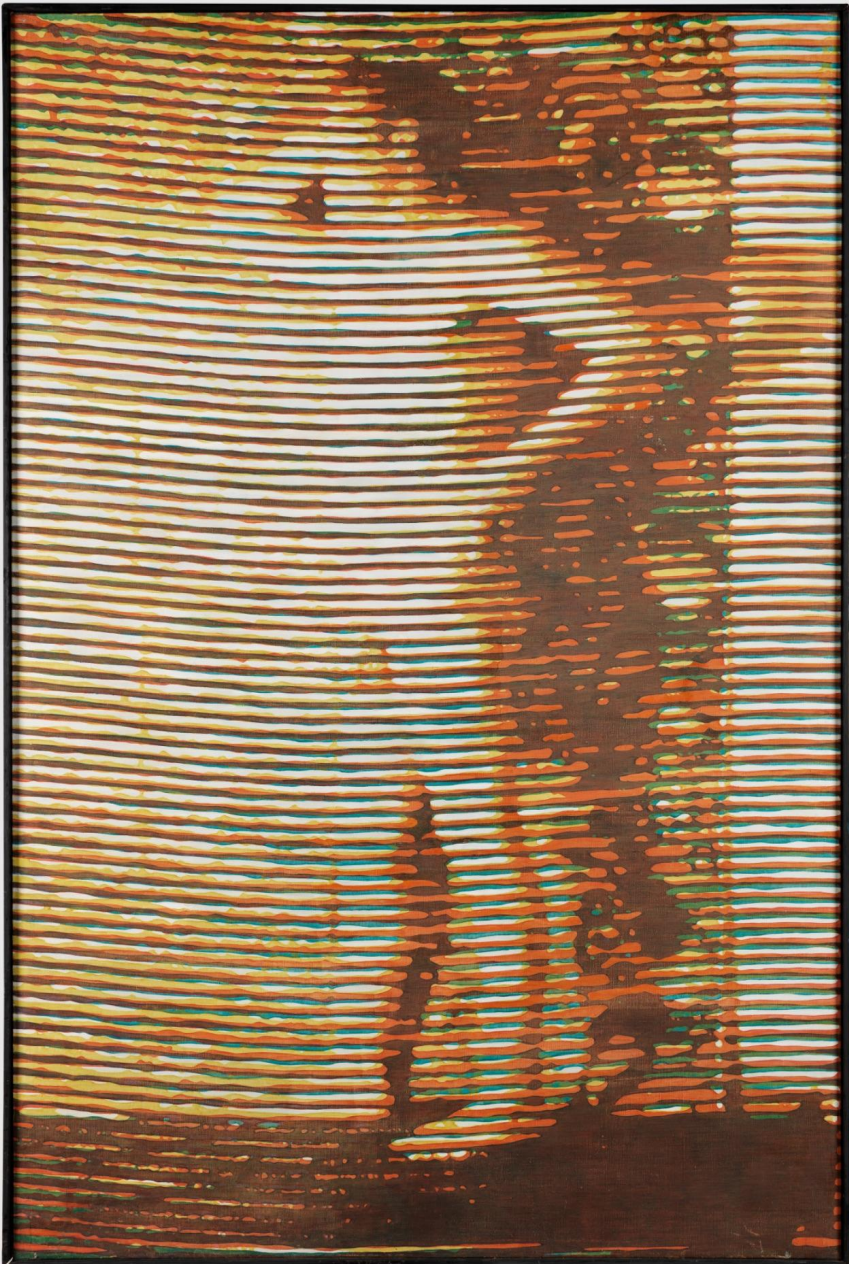
lower right, inscription on the
reverse: "Alain Jacquet 1964"

Provenance:

Collection Melat Passerieu -
Jeannine Restany

\$40,000





Alain Jacquet

Otto Hahn, 1969

Acrylic on canvas

76.77 H x 51.18 x 1.57 inches

195 H x 130 x 4 cm

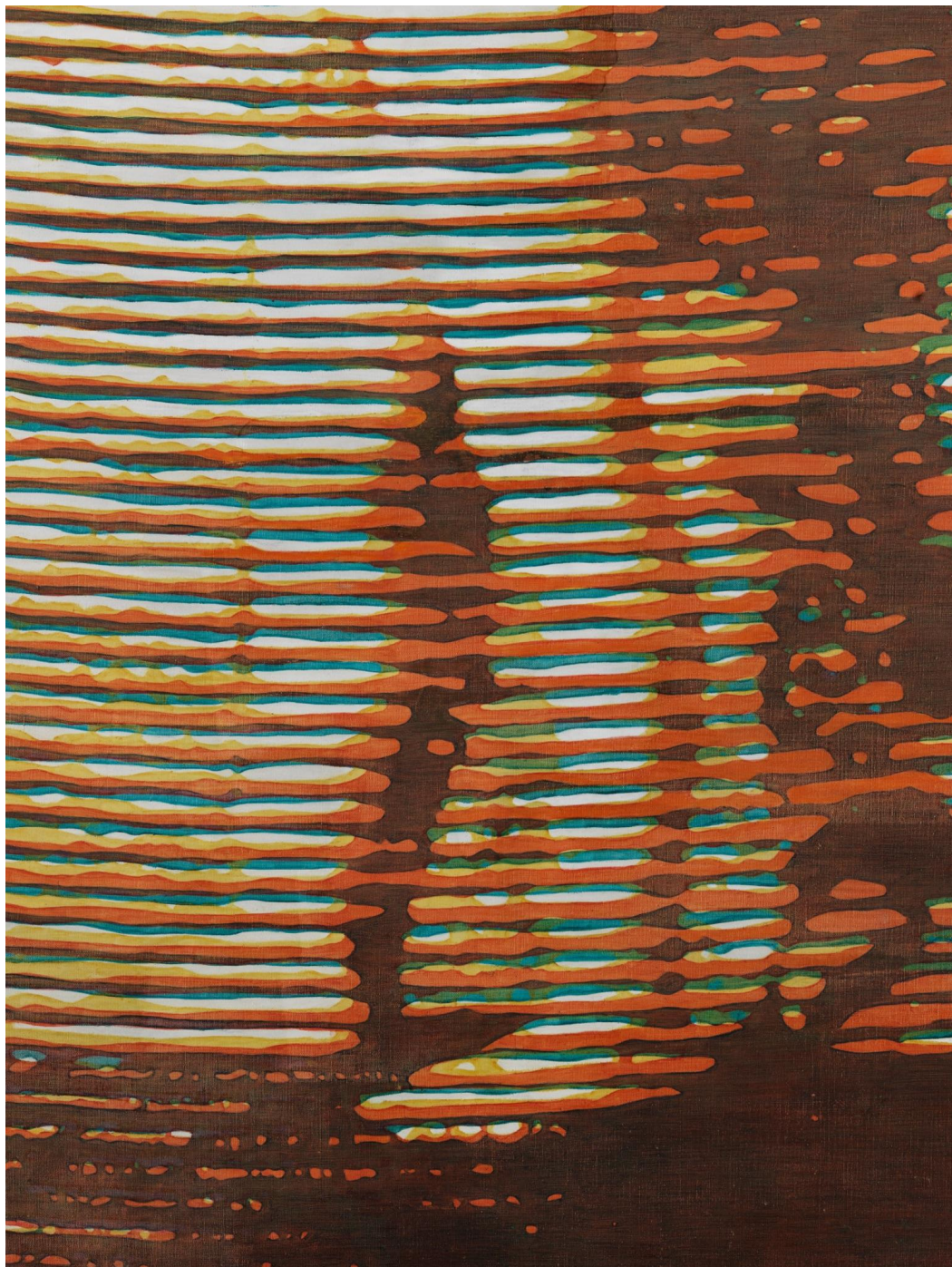
Framed: 77.6 H x 52 x 1.8 inches (197 H x 132 x 4.5 cm)

Signed and dated en verso

Provenance:

Galerie Der Spiegel, Cologne

\$110,000



Alain Jacquet

DS Engine, 1967

Acrylic on Plexiglas

49.41 H x 73.43 inches

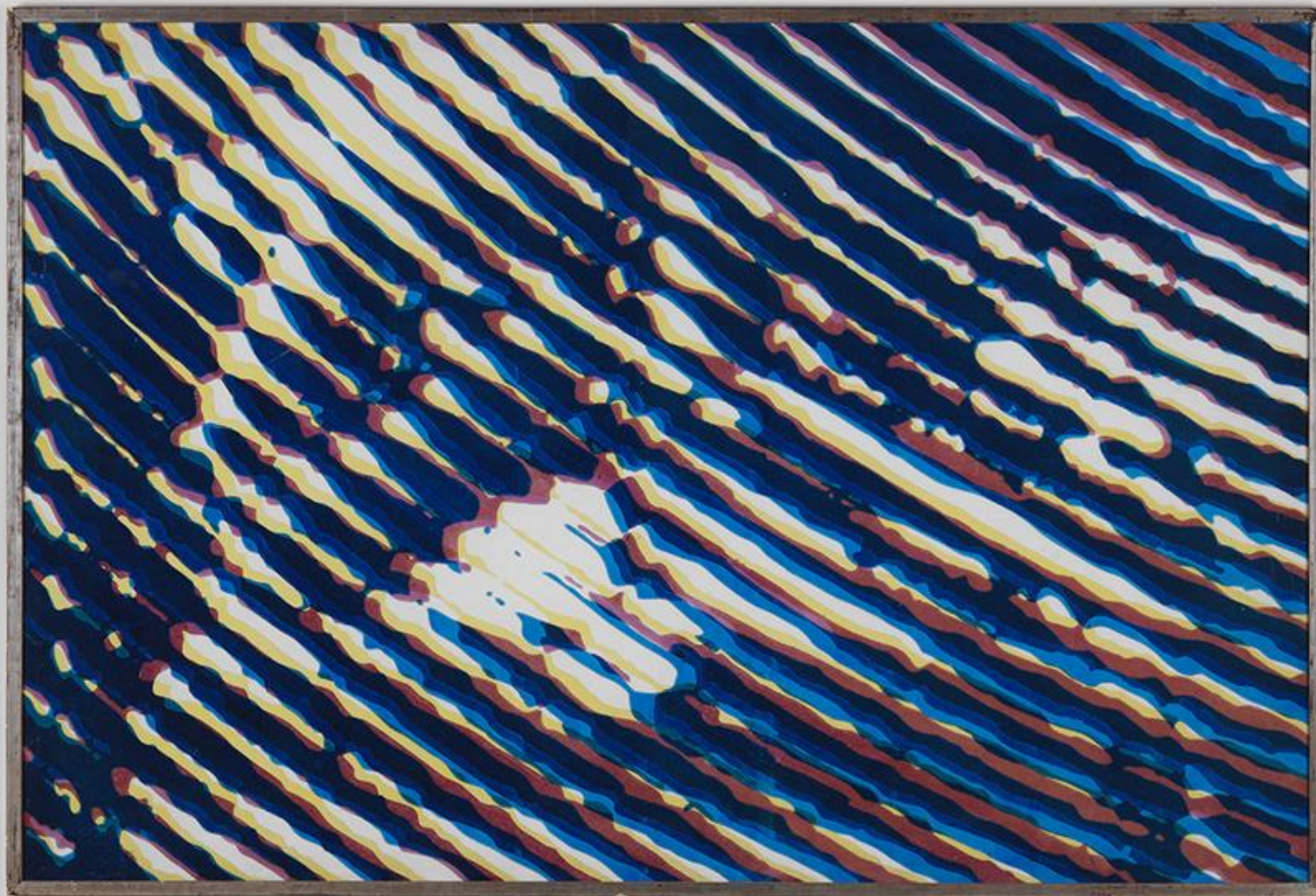
125.5 H x 186.5 cm

Provenance:

Collection Daniel Varenne, Geneva

Catalogue raisonné: AJ-PLEXOP-DSE-67-1

\$90,000





Space Age Table, Serge Mansau, 1973, at Galerie Anne-Sophie Duval, Paris, 2023

Serge Mansau

Space Age Low Table, 1973

Stainless steel and nickel-plated metal on wood

15.75 H x 66.93 D inches

40 H x 170 D cm

Unique work

Provenance:

Collection of the artist, Paris.

Exhibited:

Premier *Salon International d'Art Contemporain* (FIAC). 26

Jan. - 3 Feb. 1974, Pavillon d'Expositions Bastille, Paris.

\$80,000







Bernard Govin

Diabolo Set of 3 Chairs with Low Table, c. 1978

Wood, foam, fabric, formica

Chairs:

26.38 H x 27.56 x 33.07 inches

67 H x 70 x 84 cm

Low Table:

12.99 H x 33.46 x 20.87 inches

33 H x 85 x 53 cm

Edition Mobilier International

\$48,000







Jacques Quinet

Wall Console, for the residence of Léon Denivelle, Saint-Paul de Vence, c. 1960

Mahogany, cherrywood veneer, leather, brass

10 3/4 x 69 1/2 x 14 inches

27.3 x 176.5 x 35.5 cm

\$45,000

Maurice Pré & Janette Laverrière

Lamp, 1950

Oak, brass, paper shade

44.88 H x 18.11 x 18.11 inches

114 H x 46 x 46 cm

Stamped: MJ Pré

Provenance:

Private commission, France.

\$30,000







César

Nature Morte, 1974

Compressed enameled metal pitcher, wooden support,
Plexiglas case

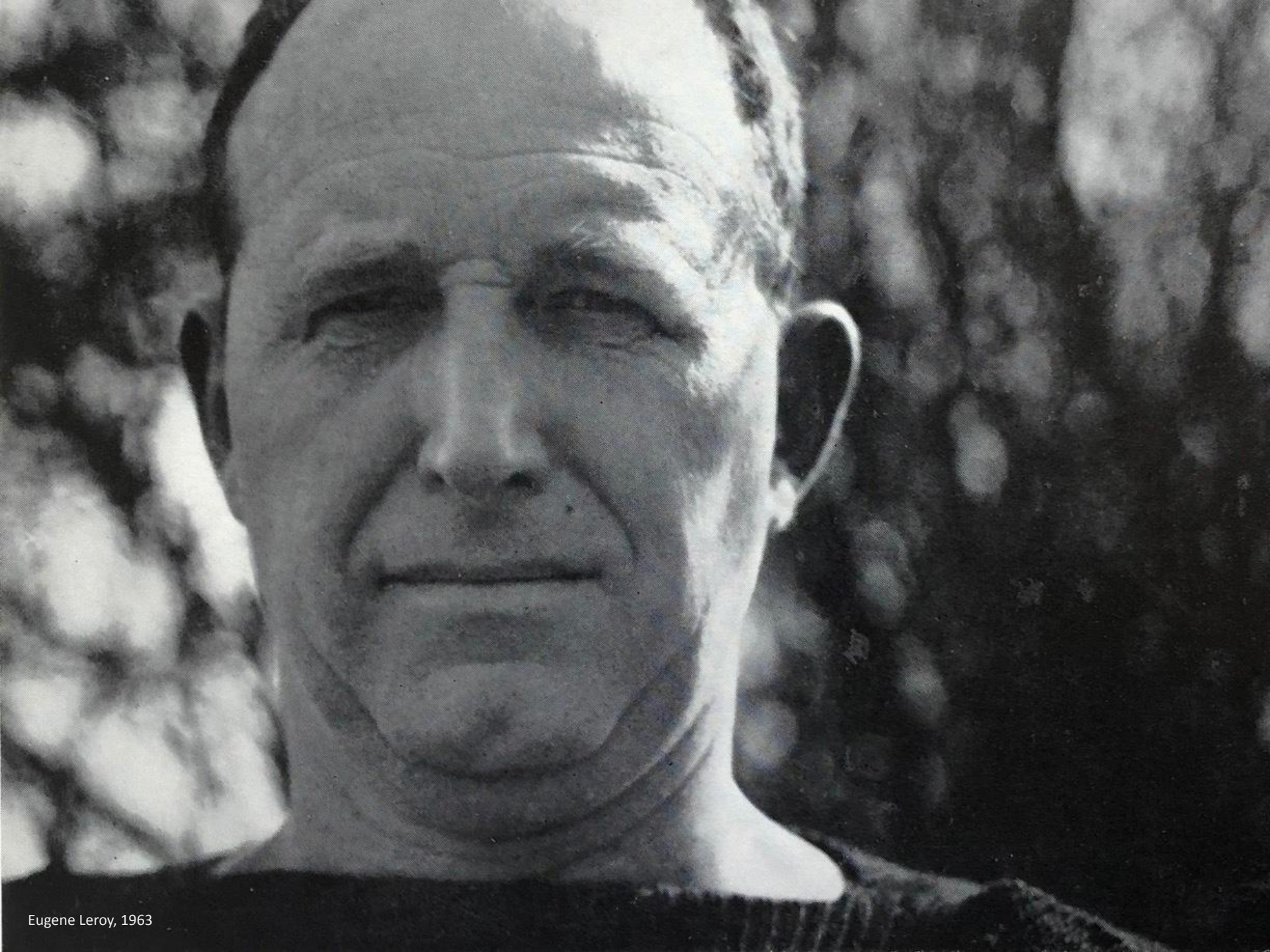
27.17 H x 23.62 x 1.38 inches

69 H x 60 x 3.5 cm

Signed and dated lower right "César, 1974, Nice"

This work is recorded in the archives of Madame Denyse
Durand-Ruel as number 2120.

\$40,000



Eugene Leroy, 1963



Eugène Leroy

Untitled (Maternité), c. 1959

Oil on canvas

39.37 H x 31.89 inches

100 H x 81 cm

Signed and dated lower right

Certificate of authenticity available.

Provenance:

Private collection, Brussels.

\$85,000



Cork oak tree, Massif des Maures, France

Made In Situ by Noé Duchaufour-Lawrance

Chêne & Liège Chair II, 2023

Oak cork tree

32.76 H x 18.11 x 17.8 inches

83.2 H x 46 x 45.2 cm

Stamped by Made in Situ

\$7,500







Vassil Ivanoff

Vassil Ivanoff

Cephalomorphic Vase

Glazed stoneware

14.76 H inches

37.5 H cm

Signed under base

Literature:

Galerie Anne-Sophie Duval. *Vassil Ivanoff: céramiste - peintre - sculpteur: "un soleil de 1,300 °C"*. Paris, Editions Gourcuff-Gradenigo, 2022, p. 45. Print.

\$20,000





Vassil Ivanoff

Composite Sculpture, c. 1965-70

Salt glazed stoneware with chamotte, porcelain,
wire

15.35 H inches

39 H cm

Signed en creux under piece

Literature:

Galerie Anne-Sophie Duval. *Vassil Ivanoff: céramiste - peintre - sculpteur: "un soleil de 1,300 °C"*. Paris, Editions Gourcuff-Gradenigo, 2022, p. 119. Print.

\$21,000





Vassil Ivanoff

Dish on a Base

Stoneware with chamotte and engobe

10.63 H x 11.81 inches

27 H x 30 cm

Signed under base

Literature:

Galerie Anne-Sophie Duval. *Vassil Ivanoff: céramiste - peintre - sculpteur: "un soleil de 1,300 °C"*. Paris, Editions Gourcuff-Gradenigo, 2022, p. 115. Print.

\$18,000



ABOUT DEMISCH DANANT

Demisch Danant was founded in 2005 by Suzanne Demisch and Stephane Danant. The gallery specializes in twentieth century French design with an emphasis on the late 1950s through the 1970s and represents the work of Maria Pergay, Pierre Paulin, Joseph-André Motte, Pierre Guariche, Michel Boyer, Jacques Dumond, Eugène Leroy, Sheila Hicks, Alain Jacquet, Philippon & Lecoq and René-Jean Caillette. Curated exhibitions on historical work are presented within environments that reference architecture and interiors of the era. As of 2022, the gallery welcomed Noé Duchaufour-Lawrance, one of just a few contemporaries on their prestigious roster.

The gallery also features exhibitions concerning the intersection of architecture, design and art, including the work of Sheila Hicks, Eugène Leroy, Alain Jacquet and César. Demisch Danant is dedicated to research and scholarship on French design and has published and authored monographs including *Antoine Philippon and Jacqueline Lecoq* and *Maria Pergay: Complete Works 1957-2010*.

Timely projects include a comprehensive monograph on seminal designer Joseph-André Motte, the development of an educational digital map of post-war French design, and a transcription of interviews with Suzanne Demisch and Maria Pergay in conversation about the designer's life, work and legacy.

DEMISCH DANANT

30 W 12th St

New York, NY 10011

T +1 212 989 5750

info@demischdanant.com

www.demischdanant.com