

CURATED
NEW WORKS



Antoine Philippon and Jacqueline Lecoq at the Salon des Artistes Décorateurs, 1965

CURATED | NEW WORKS

Fifteen years ago, when we were working on our first solo show for Antoine Philippon and Jacqueline Lecoq at the gallery, we decided to produce a catalogue to illustrate the exhibition. I met Jacqueline Lecoq a couple of years earlier, and she invited me to her home in St. Germain-en-Laye to access and study her archives for the catalogue.

For almost a year, I visited her every Wednesday to work on the project, and we usually took a break for lunch together at her blue Formica table. I always loved that table but never thought we would own it one day.

Most of the furniture in her small apartment came from the set she designed with Antoine Philippon for their previous house in 1972. This included a pair of sofas, a low table, and the dining table we recently acquired. I remember being impressed by the quality of fabrication, the elegance stemming from the simplicity of the design, and the beauty of the dark, deep blue Formica. I was a bit surprised by the red leather they mixed with the blue Formica of the sofas, an unusual color combination at the time.

The table and low table we are offering, unique pieces from Jacqueline Lecoq, are inspired by the original model they developed for a Mobilier National commission in 1972 and exhibited at the SAD of the same year. Our table is a variation of the desk they were commissioned to create, as well as this incredible low table, with the same shape and material.

Philippon and Lecoq are mostly known for their designs from the late 1950s and 1960s. There are very few models from the 1970s because the duo was primarily involved in interior design during that decade and didn't have much time to create new models for the industry. —Stephane Danant



Office Table by Antoine Philippon and Jacqueline Lecoq in 1973.



Office Table by Antoine Philippon and Jacqueline Lecoq in 1973.

Antoine Philippon and Jacqueline Lecoq

Office Table, c. 1973

Smoked glass, formica, wood

28.35 x 86.81 x 45.47 inches

72 x 220.5 x 115.5 cm

Provenance:

Developed with the villa of Philippon Lecoq, Saint Germain en Laye.

Literature:

Catalogue of the Antoine Philippon and Jacqueline Lecoq exhibition, Galerie Demisch Danant, 2011, similar model reproduced p. 103.

Anne Bony & Laurence Bartoletti, Philippon Lecoq - Designers Interior Architects 1955-1995, Du Regard, 2023, similar model reproduced p. 203.









Living room in a villa, Saint-Germain-en-Laye, France, 1972/1975.



Coffee Table by Antoine Philippon and Jacqueline Lecoq in 1973.

Antoine Philippon and Jacqueline Lecoq

Coffee Table, 1973

Formica, wood

17.52 x 68.11 x 27.76 inches

44.5 x 173 x 70.5 cm

Drawers: 30.32 inch length, each (77 cm)

Provenance:

Developed with the villa of Philippon Lecoq, Saint Germain en Laye.

Literature:

Catalogue of the Antoine Philippon and Jacqueline Lecoq exhibition, Galerie Demisch Danant, 2011, similar model reproduced p. 103.

Anne Bony & Laurence Bartoletti, Philippon Lecoq - Designers Interior Architects 1955-1995, Du Regard, 2023, similar model reproduced p. 203.











Table Antoine Dubois for the apartment of Micheline Presle. Presented with the stackable wire series chair. Collection François Arnal.



François Arnal - Atelier A

Dining Table

Metal, glass

27.95 H x 70.87 x 31.5 inches

71 H x 180 x 80 cm





*Chair Antoine Dubois for the apartment of Micheline Pesle.
Collection François Arnal/Maryse Haerdi.*

François Arnal - Atelier A

Set of 6 Chairs

Metal, foam, fabric

35.83 H x 18.11 x 16.14 inches

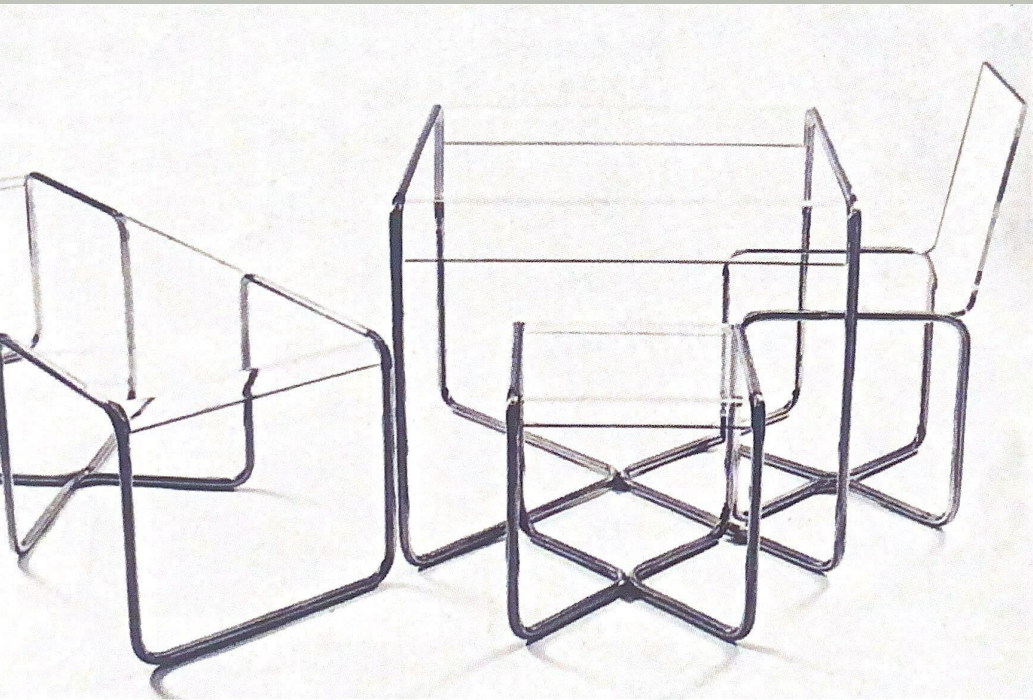
91 H x 46 x 41 cm

Seat height: 18.5 inches (47 cm)









Console Antoine Dubois for the apartment of Micheline Presle. Collection François Arnal

François Arnal - Atelier A

Desk

Metal, glass

27.95 H x 45.67 x 29.92 inches

71 H x 116 x 76 cm





Maria Pergay

Sideboard, c. 1980

Wood, laminate, gilded brass

28.74 H x 86.61 x 19.69 inches

73 H x 220 x 50 cm

Unique commission

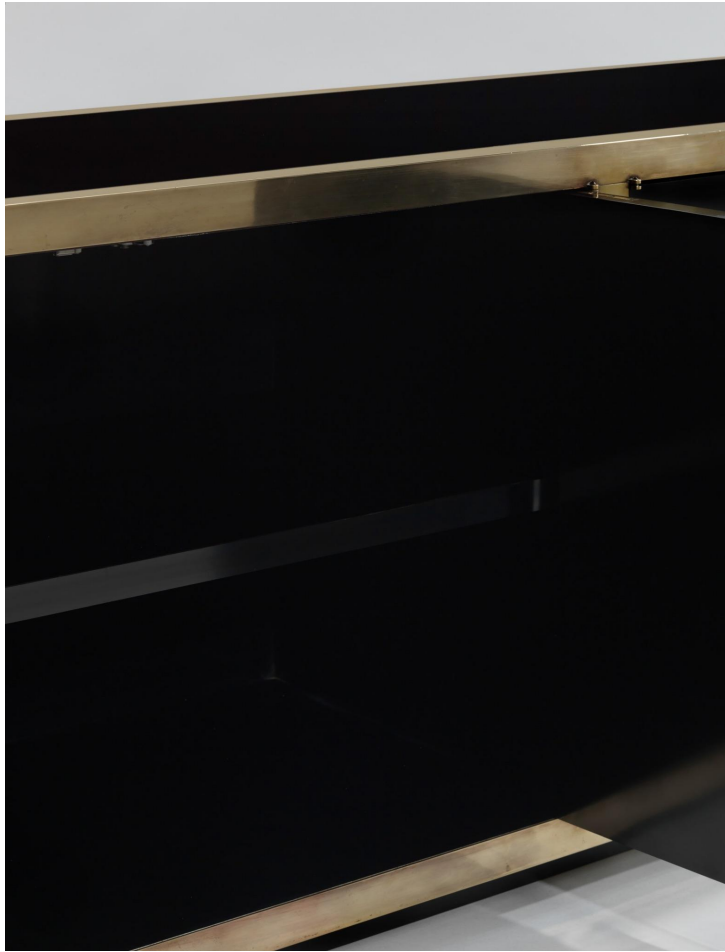
A certificate of authenticity from Alexis Pergay, beneficiary of the artist.

Provenance:

Private collection, Paris

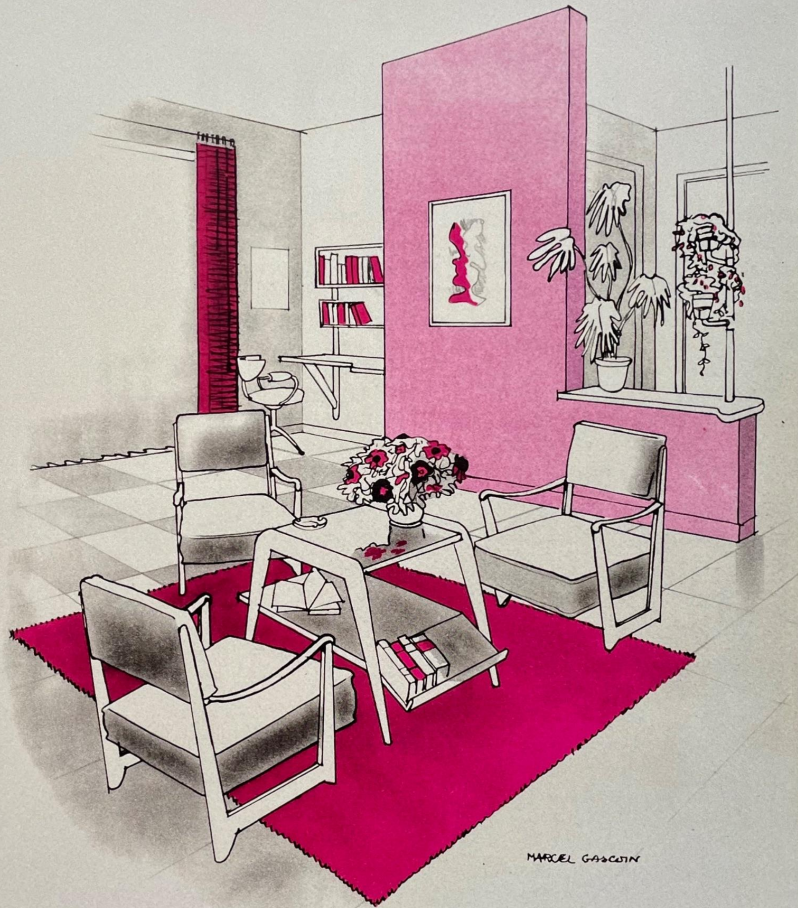








*Exposition Internationale de
l'Urbanisme et de
l'Habitation presentation by
Gascoïn, 1947.*



Gascoin's drawing of room with Armchairs, 1947.

Marcel Gascoin

Pair of Armchairs, 1947

Oak, original stuffing, fabric

29.72 H x 22.24 x 25.39 inches

75.5 H x 56.5 x 64.5 cm

Seat height: 14.6 inches (37 cm)

Designed for the *Exposition Internationale de l'Urbanisme et de l'Habitation*, 10 Jul. - 15 Aug. 1947, Grand Palais, Paris.

Produced for Living rooms, State reconstruction of Sotteville-lès-Rouen, architect Marcel Lods.

Literature:

Forest, Dominique. *Mobi Boom: L'explosion du design en France 1945-1975*. Paris, Editions Les Arts Décoratifs, 2010, Similar example reproduced pp. 22-23. Print.

Décor d'Aujourd'hui, n° 41. 1947, Cover. Print.









Jean Dives

Desk, c. 1971

Stainless steel, wood, chromed metal base

29.53 H x 59.06 x 27.56 inches

75 H x 150 x 70 cm

Edition Maison et Jardin

Paul Dupré-Lafon

Bookshelf, c. 1950

Mahogany, parchment, brass, nickel-plated bronze

68 x 72 x 11 inches

172.7 x 182.8 x 27.9 cm







Jacques Quinet

Wall Console, c. 1960

Mahogany, cherry wood veneer, leather, brass

10 3/4 x 69 1/2 x 14 inches

27.3 x 176.5 x 35.5 cm

Provenance:

Commissioned for Léon Denivel, Saint-Paul-de-Vence, France;

Thence by descent

Jacques Quinet

Set of Four Wicker Armchairs, c. 1957

Wicker, foam, fabric

35 x 24.8 x 29.9 inches

89 x 63 x 76 cm

Provenance:

EVIAN water company



Bernard Govin

Low Table, c. 1973

Stained woven bamboo, smoked glass

18.9 H x 39.37 D inches

48 H x 100 D cm







Dining Room aboard the SS France.

Maxime Old

Bridge Chair, c. 1954

Cherry wood, foam, fabric

34.06 H x 22.83 x 25.39 inches

86.5 H x 58 x 64.5 cm

Seat height: 18.5 inches (47 cm)





ABOUT DEMISCH DANANT

Demisch Danant was founded in 2005 by Suzanne Demisch and Stephane Danant. The gallery specializes in twentieth-century French design with an emphasis on the late 1950s through the 1970s and represents the work of Maria Pergay, Pierre Paulin, Jacques Dumond, Joseph-André Motte, Pierre Guariche, Michel Boyer, Antoine Philippon & Jacqueline Lecoq and René-Jean Caillette. Curated exhibitions on historical work are presented within environments that reference architecture and interiors of the era.

The gallery also features exhibitions concerning the intersection of architecture, design and art, including the work of Sheila Hicks and César.

Demisch Danant is dedicated to research and scholarship on French design and has published and authored monographs including *Antoine Philippon and Jacqueline Lecoq*, *Maria Pergay: Complete Works 1957-2010*, *Maria Pergay by François Halard*, and *Maria Pergay: Sketch Book*. Current projects include a comprehensive monograph on seminal designer Joseph-André Motte and a new book about works by Sheila Hicks commissioned for architectural projects.

DEMISCH DANANT

30 W 12th St

New York, NY 10011

T +1 212 989 5750

info@demischdanant.com

www.demischdanant.com