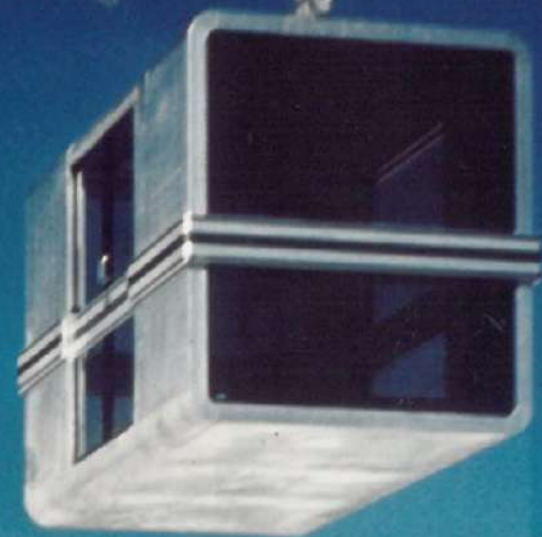


Winter Show

Feb 13 - Apr 5, 2025

Étienne Fermigier
Christian Germanaz
René-Jean Caillette
Christian Durupt
Michel Boyer
Claude de Muzac
Maria Pergay
Pierre Guariche
Alain Jacquet
Noé Duchaufour-Lawrance
Beni Rugs



With participation by Beni Rugs

Winter Show

February 13 - April 5, 2025

Inspired by the architecture and design of mid-20th-century European ski resorts, *Winter Show* showcases Demisch Danant's recent acquisitions that blend mid-century leisure, modernism, and alpine luxury. Après-ski traditions and social gatherings gained prominence in the French Alps during the 1950s and were fueled by the post-war economic boom, advancements in transportation that made travel more affordable, and the rise of consumer culture through mass media, which advertised destinations to wide audiences via travel magazines and the growing popularity of television. In *Winter Show*, Demisch Danant welcomes visitors into the interiors of an era both singular and bygone, to explore our collection of French design from the 1950s to 1970s alongside contemporary pieces that share the same vision.

Informed by some of the interiors of La Plagne designed by **Pierre Guariche** and Les Arcs by Charlotte Perriand, the exhibition features works executed in pine and oak - local and modest materials which dominated many ski resorts of the period. On view for the first time at the gallery are works by French architect **Christian Durupt**, who worked closely with Perriand on several ski resorts, including one of her most notable, Méribel. Durupt's pine tables and stools pair beautifully with oak pieces from Demisch Danant's core designers, such as a *Cabinet* by **René Gabriel** and a *Side Table* by **Gustave Gautier** from a 1954 private commission. Other new acquisitions include a pair of *Catamaran Armchairs* by **Christian Germanaz** and a rare Sofa and Chair set by **René-Jean Caillette**, exhibited at the Salon des Artistes Décorateurs in 1974.

Bernard Govin's *Elliptique Sofa* is presented alongside a pair of 1954 *Charron / Group 4 Armchairs* by **Joseph-André Motte** in their original fabric, and a *Vanity Desk* by **Louis Sognot** from his bedroom display, which was awarded grand prize at the 1955 Salon des Arts Menagers.

An archival image of the gondola lift designed by Pierre Guariche for La Plagne ski resort in 1969 was selected to represent our Winter Show, and several models Guariche used in that project are featured in the exhibition, including pieces from the *Aquilon series* and *4 Faces Chairs*.

As a counterbalance to the warmer wood tones, several works in metal and glass are also on view, including tables by **Maria Pergay** and a rare desk by **Jean Dives**. We are also proud to include two *Stylnet Tables* by **Jacques Viénot**, an architect and engineer, as well as a pioneer of French industrial design and founder of Technès.

As a through-line to the present day, *Winter Show* ties in contemporary lighting by Belgian ceramist, **Jos Devriendt**, selected cork and oak works from Made in Situ by Noé Duchaufour-Lawrance, and a stunning selection of rugs from **Beni's** Chalet collection. Featuring expressionist interpretations of iconic Alpine emblems, each heritage-quality, hand-knotted wool rug can also be seen as emblematic of the emphasis on humble, local materials found in winter retreats, enhancing the camaraderie and lavish creature comforts of the après-ski.

Much like the old-world techniques of chalet-construction, the process of Moroccan rug-making speaks a language of sturdiness and longevity, says Beni co-founder Robert Wright, There's an inarticulable allure to this kind of craftsmanship where memories are held in objects and spaces that persevere.



Christian Durupt

Table, c. 1960

Pine

28.74 H x 66.14 x 28.74 inches

73 H x 168 x 73 cm

(CDT001)

Provenance:

Meribel ski resort

\$18,000





Christian Durupt

Pair of Stools, c. 1960

Pine

16.14 H x 13.78 x 14.57 inches

41 H x 35 x 37 cm

(CDT003)

Provenance:

Meribel Ski Resort

\$12,000



Christian Durupt

Table, c. 1960

Pine

28.74 H x 31.1 x 28.94 inches

73 H x 79 x 73.5 cm

(CDT002)

Provenance:

Meribel ski resort

\$16,000





French

Lamp, c. 1975

Wood, fabric shade

18.7 H x 8.27 x 5.12 inches

47.5 H x 21 x 13 cm

Shades: 40 H x 33.5 x 28 cm

(F0143)

\$8,000

Alain Richard & Michel Lefèvre

Model 807 Coffee Table, c. 1956

Chromed metal, plywood, wood
marquetry

13.78 H x 24.8 x 24.8 inches

35 H x 63 x 63 cm

Edition Meubles TV

(AR2372)

\$14,000









Christian Germanaz

Pair of Catamaran Armchairs, 1982

Beech, original cotton fabric

30.71 H x 30.71 x 24.8 inches

78 H x 78 x 63 cm

Seat height: 12.6 inches (32 cm)

Edition Baumann

(CG0460)

\$20,000



Maxime Old

"Grasshopper" Side Table, 1946

Mahogany, glass

23.62 H x 15.5 x 9.84 inches

60 H x 39.4 x 25 cm

(MO0018)

Exhibited:

19th Salon des Arts Ménagers, 1950, Grand Palais, Paris.

Literature:

Badetz, Yves. *Maxime Old: Architecte-Décorateur*. Paris,

Norma,

2000, Similar models reproduced p. 180. Print.

\$12,000





Maxime Old

Set of 3 Nesting Tables, 1939

Oak, glass, patinated brass

18.11 H x 21.46 x 18.11 inches

46 H x 54.5 x 46 cm

1 - 41 H x 47.5 x 43.6 cm

1 - 36.5 H x 40.7 x 42.5 cm

(MO0009)

\$22,000





René-Jean Caillette

Pair of Chairs, c. 1974

Wood, cushions

24 H x 25.2 x 33.46 inches

61 H x 64 x 85 cm

Seat height (without cushion): 8.7
inches (22 cm)

Edition Charron
(RC3010)

\$24,000



Jacques Dumond

Low Table, c. 1960s

Beech wood

12.6 H x 47.24 x 19.69 inches

32 H x 120 x 50 cm

(JD3194)

\$24,000







René-Jean Caillette

Two-seat Sofa, c. 1974

Wood

24.8 H x 49.21 x 32.28 inches

63 H x 125 x 82 cm

Seat height (without cushion): 8.7

inches (22 cm)

Edition Charron

(RC3009)

\$22,000





René-Jean Caillette

B1 Floor Lamp, 1956

Wood, tubular brass, shade

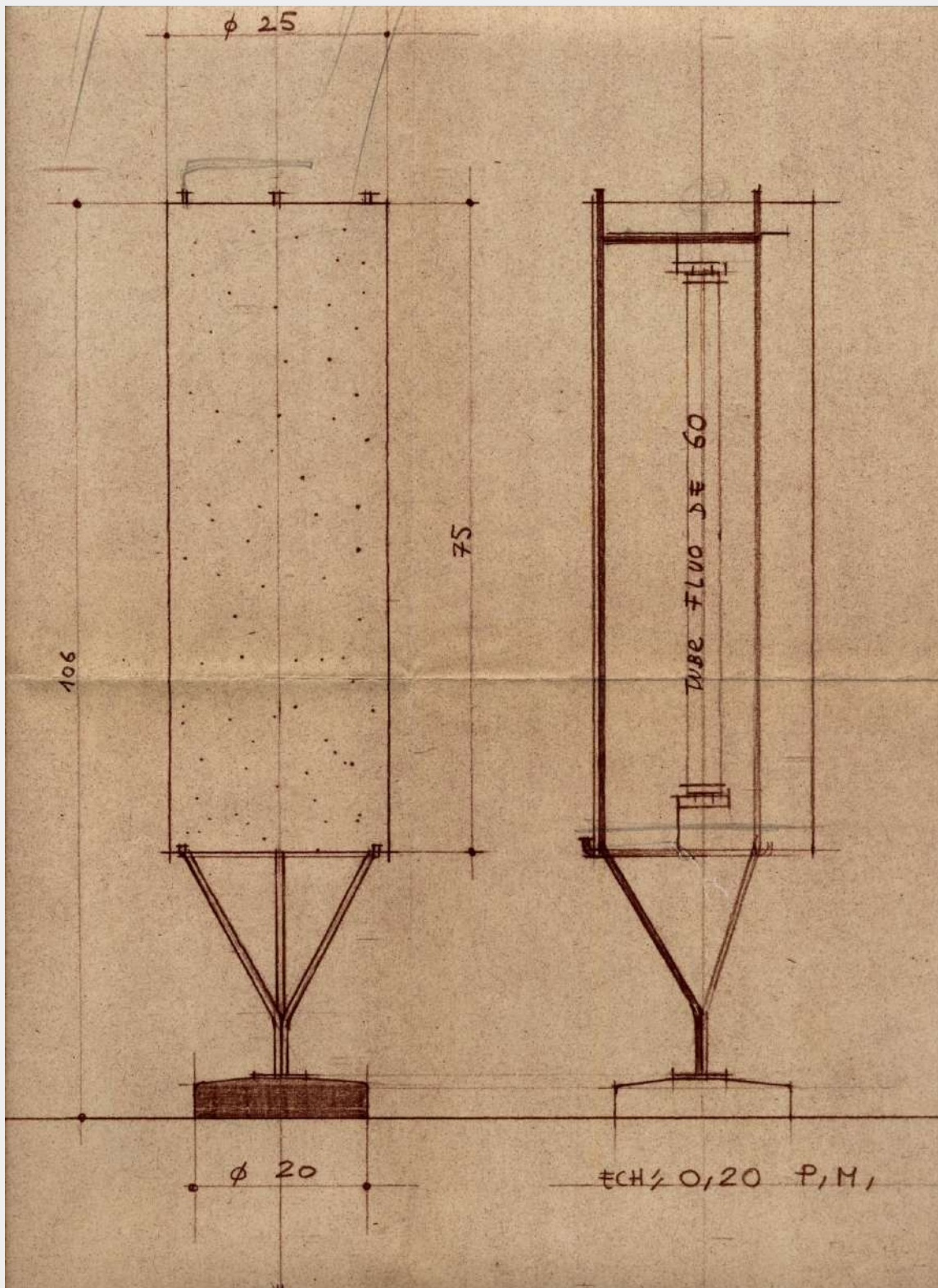
43.31 H x 9.45 D inches

110 H x 24 D cm

Edition Disderot

(RC3000)

\$18,000



Drawing of B1 Floor Lamp by Caillette.

Gustave Gautier

Small Table with Two Drawers, 1954

Waxed oak

16.54 H x 35.04 x 11.81 inches

42 H x 89 x 30 cm

Edition Rimard and Dumuid

(GG3131)

Provenance:

Private commission, France.

Literature:

Marie France, 11 Oct. 1954.

\$17,000







Made In Situ by Noé Duchaufour-Lawrance

Chêne & Liège Armchair, 2023

Oak cork tree

27.32 H x 26.93 x 26.85 inches

69.4 H x 68.4 x 68.2 cm

Seat height: 15.8 inches (40.2 cm)

Edition 1

Stamped Made in Situ

Numbered edition

(M 88.1)

\$9,000





Made In Situ by Noé Duchaufour-Lawrance

Chêne & Liège Side Table, 2023

Oak cork tree

23.62 H x 11.81 x 14.57 inches

60 H x 30 x 37 cm

Edition 1

Stamped Made in Situ

Numbered edition

(M 97.1)

\$5,000



Made In Situ by Noé Duchaufour-Lawrance

Chêne & Liège Sideboard, 2024

Oak cork tree

21.65 H x 87.4 x 19.69 inches

55 H x 222 x 50 cm

Edition 1

Stamped Made in Situ

Numbered edition

(M 119.1)

\$40,000





Made In Situ by Noé Duchaufour-Lawrance

Chêne & Liège Lamp I, 2023

Oak cork tree, sanded glass

19.88 H x 15.75 x 14.37 inches

50.5 H x 40 x 36.5 cm

Edition 1

Stamped Made in Situ

Numbered edition

(M 98.1)

\$7,000





Jacques Viénot

Gueridon, c. 1938

Mahogany

21.85 H x 26.77 D inches

55.5 H x 68 D cm

Top: 23.4 D inches (59.5 D cm)

Edition Stylnet

(JVS002)

\$12,000



Jacques Viénot

Desk, c. 1938

Mahogany

28.74 H x 45.28 x 27.56 inches

73 H x 115 x 70 cm

Edition Stylnet

Label on underside

(JVS001)

\$14,000





Louis Sognot

Vanity Desk, 1955

Oak

29.72 H x 43.7 x 20.08 inches

75.5 H x 111 x 51 cm

(LS0014)

Exhibited:

First prize for "La Chambre des Parents," Wood Technique Concourse, *24th Salon des Arts Ménagers*. Feb. - Mar. 1955, Grand Palais, Paris.

Literature:

Arts Ménagers. Apr. 1955, p. 57. Print.

\$24,000



Louis Sognot

Stool

Wood, Sadroplast cords

19.29 H x 21.85 x 13.98 inches

49 H x 55.5 x 35.5 cm

(LS0015)

Exhibited:

First prize for "La Chambre des Parents," Wood Technique

Concourse, *24th Salon des Arts Ménagers*. Feb. - Mar.

1955, Grand

Palais, Paris.

Literature:

Arts Ménagers. Apr. 1955, p. 57. Print.

\$8,000







Louis Sognot

Low Chair, 1955

Solid beech, Sadroplast cords

33.86 H x 21.26 x 27.17 inches

86 H x 54 x 69 cm

Seat height: 13.8 inches (35 cm)

Edition Les Usines Réunies

(LS0007)

Exhibited:

First prize for "La Chambre des Parents," Wood Technique
Concourse, *24th Salon des Arts Ménagers*. Feb. - Mar.

1955, Grand

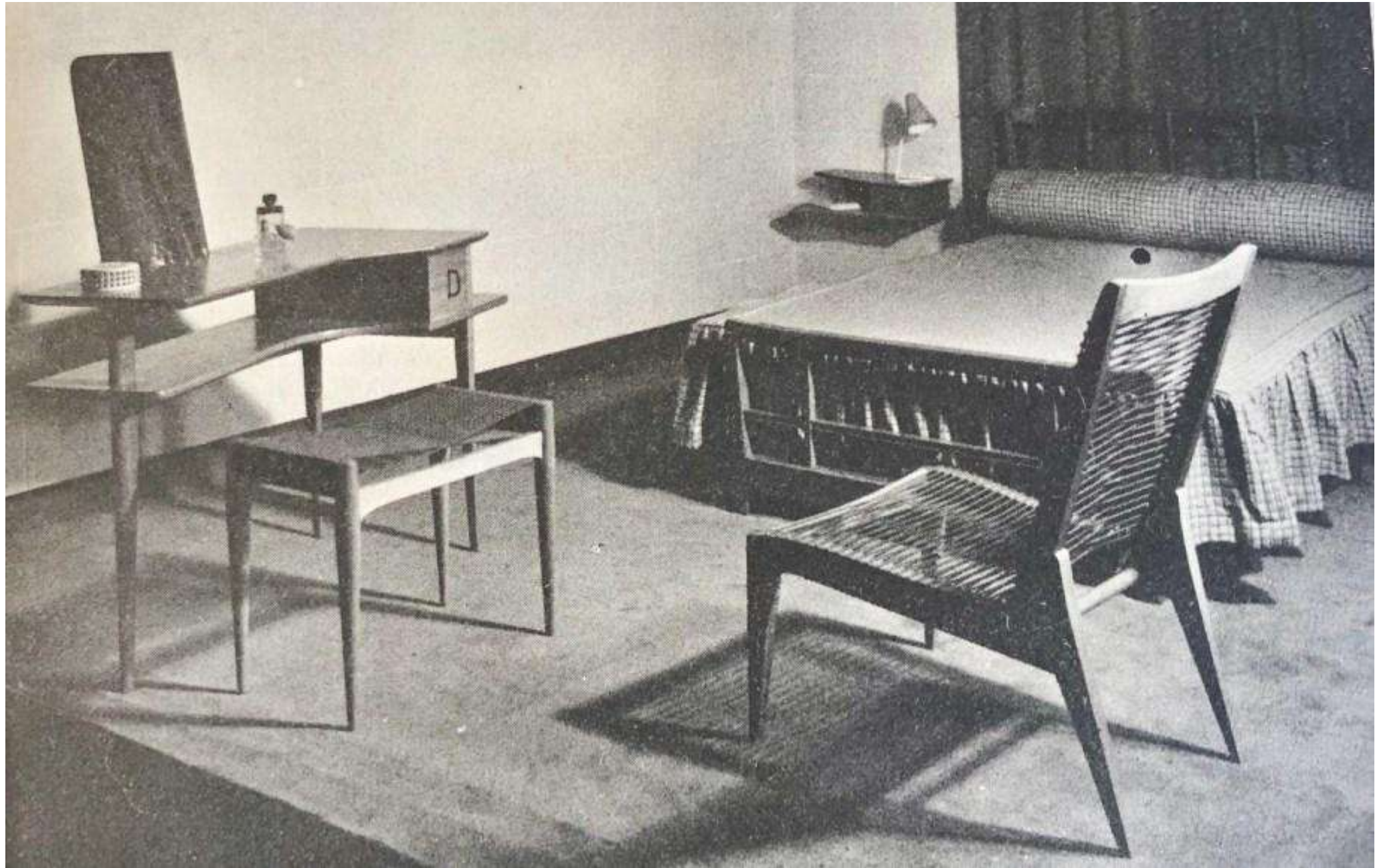
Palais, Paris.

Literature:

Arts Ménagers. Apr. 1955, p. 57. Print.

\$12,000





Sognot set, concours du bois, SAM, 1955.



André Renou & Jean-Pierre Génisset

Multi Functional Cabinet, 1946

Oak, stained beech, Formica, glass, painted metal

68.5 H x 82.28 x 17.72 inches

174 H x 209 x 45 cm

Edition La Crémaillère

(AR0009)

Provenance:

Private collection, family of the original owner.

Exhibited:

Salon d'Automne 1946. 4 oct. - 10 nov. 1946, Musée des Beaux-arts de la ville de Paris.

Literature:

Renous, Pascal. "Portraits de décorateurs," *Revue de l'Ameublement*. 1964, p. 28. Print.

\$60,000







Francis Jourdain

Pair of Chairs, c. 1910

Wood, rattan

33.46 H x 16.54 x 18.11 inches

85 H x 42 x 46 cm

Seat height: 17.7 inches (45 cm)

(CFJ0003)

\$12,000



Jean Dives

Desk, c. 1971

Stainless steel, wood, chromed metal
base

29.53 H x 59.06 x 27.56 inches

75 H x 150 x 70 cm

Edition Maison et Jardin
(JD3502)

\$40,000



Etienne Henri Martin

Armchair, 1954

Wood, foam, fabric

31.89 H x 22.83 x 26.77 inches

81 H x 58 x 68 cm

Seat height: 19.7 inches (50 cm)

(EM2156)

\$12,000



Claude de Muzac

Borneo Dayak Dish & Filipino

Necklace Lamp

Patinated bronze, wood, natural
beads

17.91 H inches

45.5 H cm

(Cd22)

Provenance:

Collection of Pierre & Jacqueline Simon

\$24,000







Claude de Muzac/ Jean-Baptiste Caron

Frame/ L'âme Mise à Nu, c. 1970s/ 2023

Claude de Muzac frame/ Mirror with anti-fog treatment by Jean-Baptiste Caron

Frame:

15.24 H x 12.6 x .59 inches

38.7 H x 32 x 1.5 cm

L'âme Mise à Nu:

12.6 H x 10.24 inches

32 H x 26 cm

\$9,000

Jacques Dumond

Secretary Console, 1952

Avodiré wood, lacquered metal,
leather sole

34.65 H x 41.73 x 15.75 inches

88 H x 106 x 40 cm

Height open: 43.3 inches (110 cm)
(JD3154)

Provenance:

Private Commission for the
Director of the Tropical Forest Center,
Paris

\$30,000





Jacques Dumond

Display Console, 1952

Avodiré wood, lacquered metal, leather

34.65 H x 41.73 x 15.75 inches

88 H x 106 x 40 cm

Depth open: 31.25 inches (79.4 cm)

(JD3156)

Provenance:

Private Commission for the Director of the Tropical Forest
Center, Paris

\$26,000







Private Commission for the Director of the Tropical Forest Center, Paris, 1952.

Jacques Dumond

Pair of Ottomans, c. 1960

Polished steel, foam, fabric

16.14 H x 22.05 x 14.57 inches

41 H x 56 x 37 cm

Provenance:

Apartment of Jacques Dumond, Paris

\$20,000





Jacques Dumond's apartment, c. 1960s.

Jacques Dumond

Dining Table, c. 1964

Polished steel, marble

28.74 H x 55.12 D inches

73 H x 140 D cm

Unique work

(JD3201)

Provenance:

Private commission, Philippe Leloup apartment, Paris.

\$50,000





Jacques Dumond

Travailleuse Shelf, c. 1950

Oak, rattan

36.02 H x 25.79 x 16.93 inches

91.5 H x 65.5 x 43 cm

(JD3385)

Provenance:

Private collection, Bordeaux

\$20,000





Attributed to Jacques Dumond

Console, c. 1950s

Metal, wood, glass

35.04 H x 55.12 x 17.72 inches

89 H x 140 x 45 cm

Unique work

(JD2532)

Provenance:

Private Commission, Paris

\$20,000



Bernard Govin

Elliptique Sofa, c. 1960s

Wood, foam, fabric

23 H x 88 x 29.5 inches

58.4 H x 223.5 x 74.9 cm

Seat height: 16 inches (40.6 cm)

Edition Saporiti

(BG2809)

\$26,000





Maria Pergay

Table Cocktail Carrée, 1968

Brushed stainless steel, mirror-polished stainless steel

14.17 H x 43.11 x 43.11 inches

36 H x 109.5 x 109.5 cm

(MP3321)

\$50,000

Provenance:

Private collection, Paris.

Literature:

Demisch, Suzanne, and Stephane Danant. *Maria Pergay: Complete Works 1957-2010*. Bologna, Damiani, 2011, p. 154. Print.

Suzanne Demisch, *Maria Pergay : Between Ideas and Design*, Verona, 2006, p. 142. Print.

\$50,0000









Joseph-André Motte

Pair of Armchairs, c. 1954

Painted metal, mahogany, plywood,
foam, fabric

31.89 H x 23.62 x 32.28 inches

81 H x 60 x 82 cm

Seat height: 17.1 inches (43.5 cm)

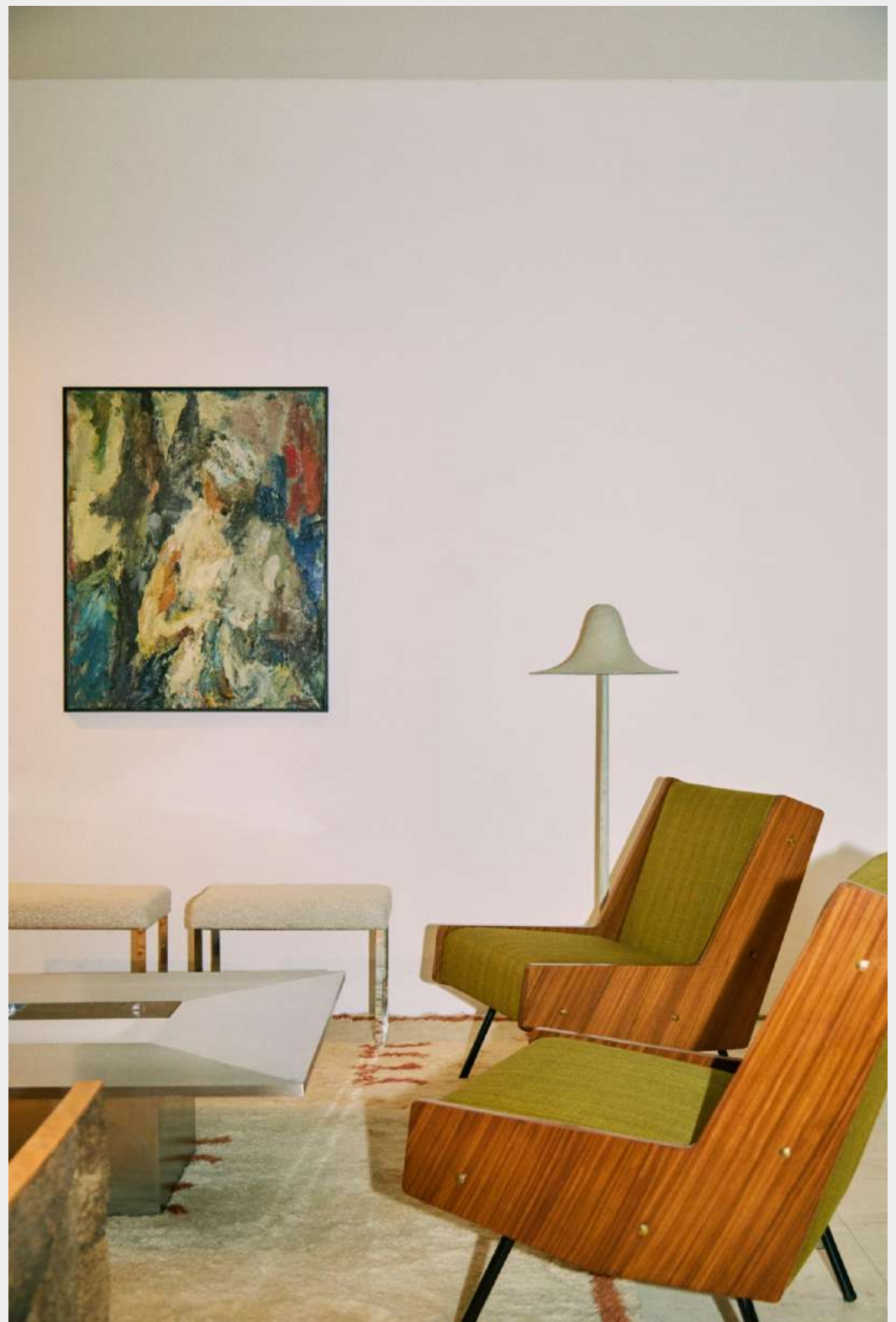
Edition Charron/ Groupe 4
(JM3292)

\$45,000





Joseph-André Motte, *Armchair*, Charron, 1954





Joseph-André Motte
J-1 Floor Lamp, 1960
Painted wood, opaline glass
63 H x 9.8 D inches
160 H x 24.9 D cm
Edition Disderot
(JM3244)

\$12,000



Joseph-André Motte

M1 Plexi Floor Lamp, 1958

Ash, patinated brass, Plexiglas

48.82 H x 11.02 D inches

124 H x 28 D cm

Edition Les Huchers-Minvielle

(JM3303)

Provenance:

Collection of Charles Minvielle

Literature:

Clémence et Didier Krzentowski - *The Complete Designer's Lights 1950 – 1990* – Éditions JRP Ringier, Zürich, 2012. Modèle identique reproduite page 77.

\$16,000





Étienne Fermigier

Set of 4 Chairs, 1965

Chromed metal, molded plywood, mahogany veneer

31.1 H x 20.47 x 19.29 inches

79 H x 52 x 49 cm

Seat height: 18.5 inches (47 cm)

Edition Roset

(ÉF3156)

\$12,000





Étienne Fermigier

F17 Table Lamp, 1960

Marble, chromed metal, original fabric shade

17.13 H x 6.69 x 6.69 inches

43.5 H x 17 x 17 cm

Edition Disderot

(ÉF3217)

\$16,000



Étienne Fermigier

Floor Lamp, 1969

Painted metal, aluminum, chromed steel

63.75 H x 13 x 12.25 inches

161.9 H x 33 x 31.1 cm

Edition Monix

(EF3123)

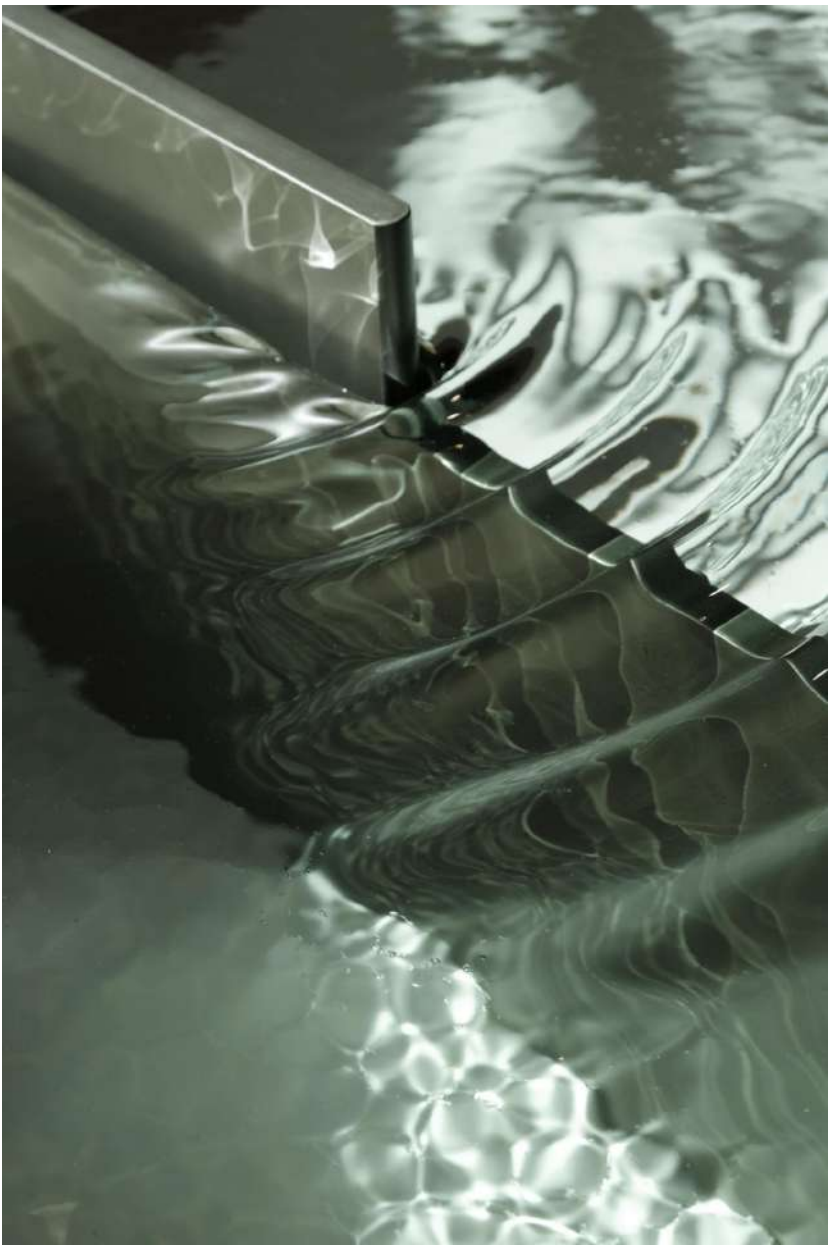
\$14,000





Noé Duchaufour-Lawrance
*Madonna del Monte Round Coffee
Table L, 2024*
Aluminum, Murano glass
13.78 H x 35.43 x 35.43 inches
35 H x 90 x 90 cm
Edition 1 of 18, with 2 AP
Engraved on base
(ND0088.1)

\$35,000





Noé Duchaufour-Lawrance

Madonna del Monte Side Table, 2021

Aluminum, glass

23.62 H x 19.69 x 19.69 inches

60 H x 50 x 50 cm

Table top height: 21.7 inches (55 cm)

Edition 4 of 5, with 1AP

Engraved on base

(ND0087.4)

\$30,500

Olivier Mourgue

Pair of Cubic Chairs, 1968

Chromed metal structure, foam, fabric

24.02 H x 33.07 x 29.92 inches

61 H x 84 x 76 cm

Edition Airborne

(OM3137)

\$24,000







Pierre Guariche

Wall Cabinet, 1952

Oak, painted wood, glass

30.31 H x 69.29 x 10.63 inches

77 H x 176 x 27 cm

Edition Galerie Mai

(PG3199)

\$30,000





Pierre Guariche

Aquilon Chair and Stool, c. 1966

Lacquered wood, foam, fabric

28.74 H x 27.17 x 27.17 inches

73 H x 69 x 69 cm

Seat/ Stool height: 14.2 inches (36
cm)

Edition Huchers-Minvielle

(PG0149)

Literature:

Jacob, Delphine, et al. *Pierre Guariche*. Paris, Éditions
Norma, 2020, Similar models reproduced p. 191. Print.

\$14,000





Pierre Guariche

Aquilon Low Table, 1960

Formica, teak, glass

13.78 H x 27.56 x 27.56 inches

35 H x 70 x 70 cm

Edition Les Huchers-Minvielle

(PG3120)

\$12,000





Aquillon set for Les Huchers-Minvielle.

Pierre Guariche

SG1 Chair, 1958

Steel base, foam, fabric

30.71 H x 25 x 28.75 inches

78 H x 63.5 x 73 cm

Seat height: 15.5 inches (39.4 cm)

Edition Siege Témoins

(PG3183)

\$12,000







Jean-Paul Barry

Bedside Table, c. 1968

Aluminum

14.57 H x 13.39 x 14.17 inches

37 H x 34 x 36 cm

Edition E.C.F.I.

(JB0140)

\$15,000





Roger Tallon / Technès

Low Table, Orcel Series, 1966

Steel, chromed metal, teak

15.25 H x 31.5 x 19.7 inches

38.7 H x 80 x 50 cm

Edition Flambo

(RT2865)

\$12,000



**Geneviève Dangles and Christian
Defrance**

*Modular Sofa (Armchair & 3 Chairs),
1958*

Iron, tubular steel, foam, fabric

31.5 H x 98.43 x 32.28 inches

80 H x 250 x 82 cm

Seat height: 15.7 inches (40 cm)

Seat width: 22 inches (56 cm)

Edition Burov

(GD3140)

\$30,000









Michel Boyer

Coffee Table, 1968

Lacquered wood

13.78 H x 38.58 x 39.37 inches

35 H x 98 x 100 cm

Edition Rouve

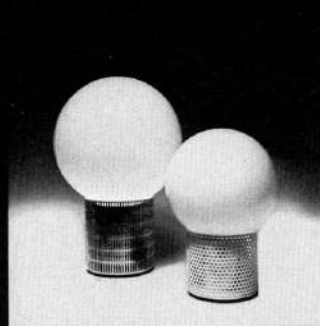
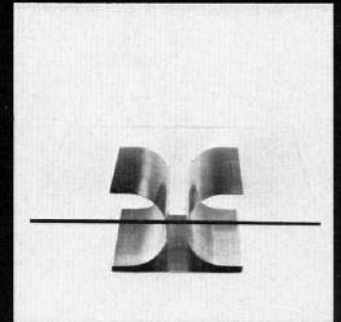
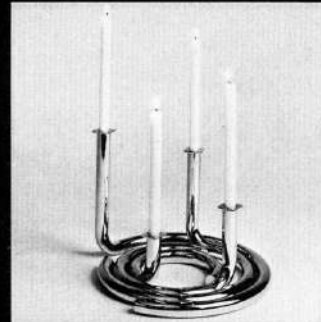
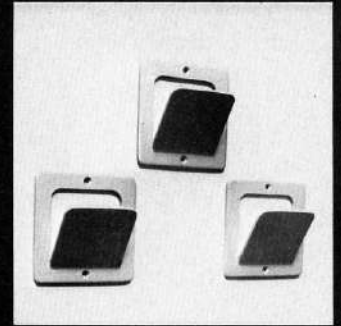
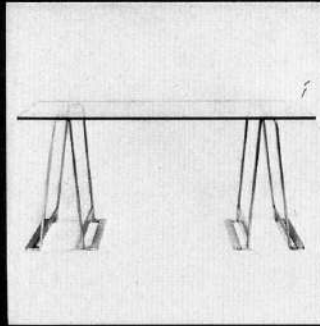
(MB3167)

Literature:

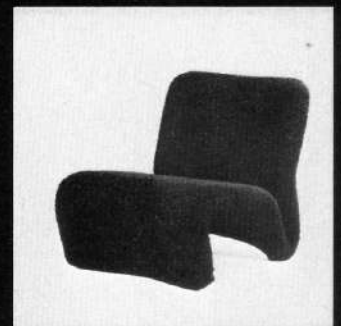
Favardin, Patrick, and Guy Block-Champfort. *Decorators of the 60s-70s*. Translated by Eileen Powis, Éditions NORMA, 2015. Similar example reproduced pp. 89, 97

\$20,000





ROUVE
 68, rue Bonaparte
 Paris 6°
 386.09.12 - 326.30.81
 Village Suisse
 54 bis, avenue
 de la Motte-Picquet
 Paris 15° - 273.23.08 
 création Michel Boyer



ART FONCTIONNEL
 8, rue du Temple, 21 DIJON - 32.74.89
 LA BOÎTE A MALICES
 22, rue Palais Grillet, 69 LYON 2° - 37.83.16
 CANEZIN
 63, rue de la Pomme, 31 TOULOUSE 01 - 22.25.84
 CYBELE
 17, rue Haute-Seille, 57 METZ - 69.43.19
 DOMUS Decoration
 27, rue Louis Barthou, 64 PAU - 27.78.70
 FONCTION HABITAT
 Immeuble Le France, Rue de la Gare,
 73 CHAMBERY
 TERZO
 523, rue Paradis, 13 MARSEILLE 8°

Olivier Mourgue

Djinn Table, c. 1966

Metal wire, wood, Formica

28.35 H x 66.02 x 30.59 inches

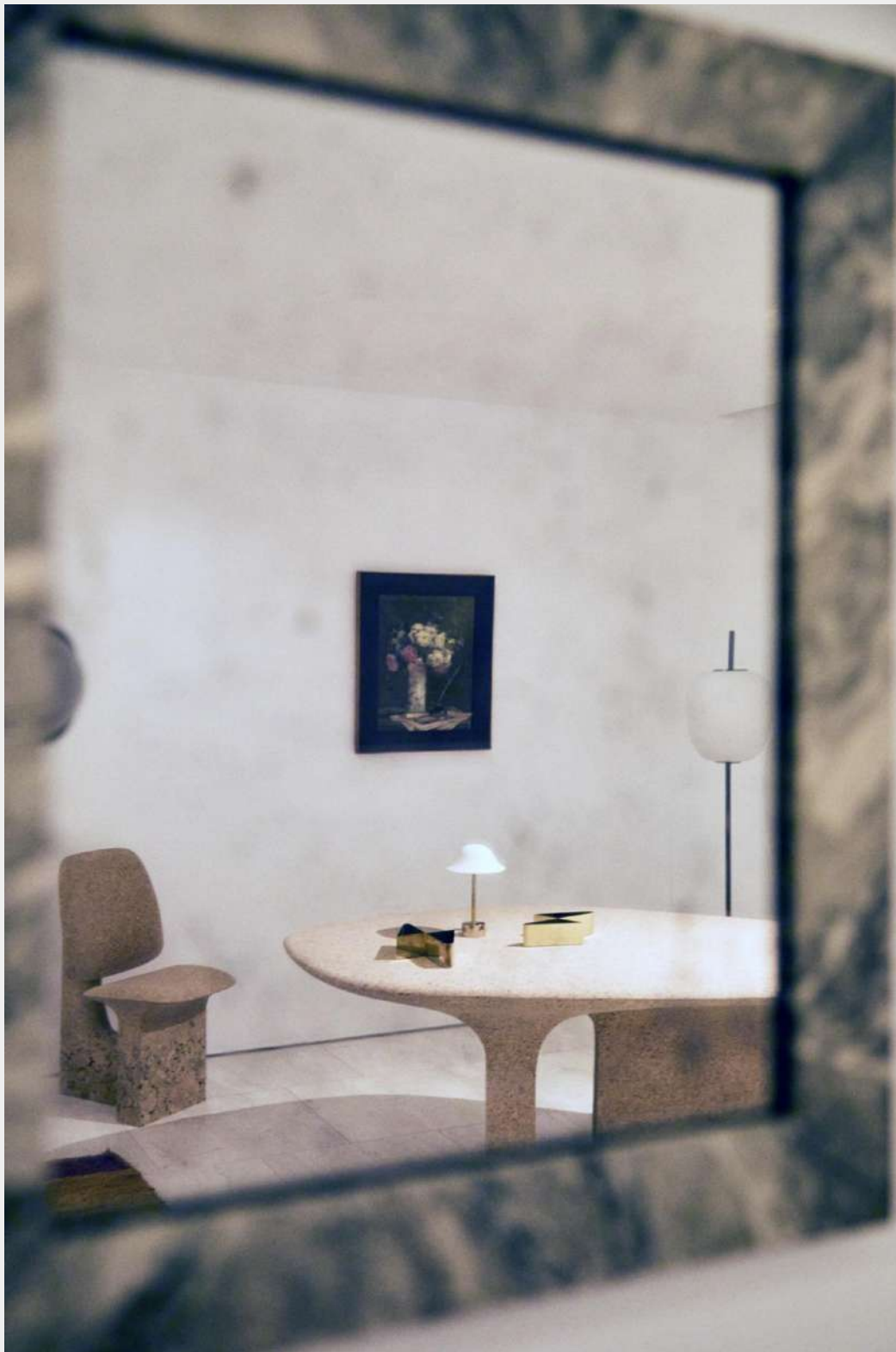
72 H x 167.7 x 77.7 cm

Edition Airborne

(OM3147)

\$16,000







Made In Situ by Noé Duchaufour-Lawrance

Burnt Cork Chair, 2021

Untreated agglomerated cork

33.86 H x 19.29 x 24.21 inches

86 H x 49 x 61.5 cm

Edition 03

Stamped by Made in Situ

Numbered series

(ND0002.03)

Certificate of authenticity available.

Provenance:

Made in Situ, Lisbon

\$10,000



Made In Situ by Noé Duchaufour-Lawrance

Burnt Cork Table, 2021

Untreated agglomerated cork

29.53 H x 82.28 x 47.24 inches

75 H x 209 x 120 cm

Edition 03

Stamped by Made in Situ

Numbered series

(ND0069.03)

\$24,000





Jos Devriendt
Flower 99, 2023
Ivory white bronze
51.77 H x 16.73 x 16.73 inches
131.5 H x 42.5 x 42.5 cm
Unique
(JD3421)

\$39,000





Jos Devriendt

Flower 80, 2023

Ivory white, brass, bronze

23.03 H x 5.59 x 5.59 inches

58.5 H x 14.2 x 14.2 cm

Unique

(JD3417)

\$13,000



Jos Devriendt

Flower 79, 2023

Ivory white, bronze, brass

11.73 H x 4.33 x 7.68 inches

29.8 H x 11 x 19.5 cm

Unique

(JD3416)

\$12,000



Jos Devriendt

Flower 19, 2023

Ivory white, metal laque

73.23 H x 7.48 x 11.42 inches

186 H x 19 x 29 cm

Unique

(JD3396)

\$19,000



Serge Mansau

Pair of Linea 4 Vases

Chromed metal

11.81 H x 3.15 x 5.12 inches

30 H x 8 x 13 cm

(SU0003)

\$8,000

Jean-Baptiste Caron

La Somme Constitue le Tout, 2022

Concrete, quartz geodes

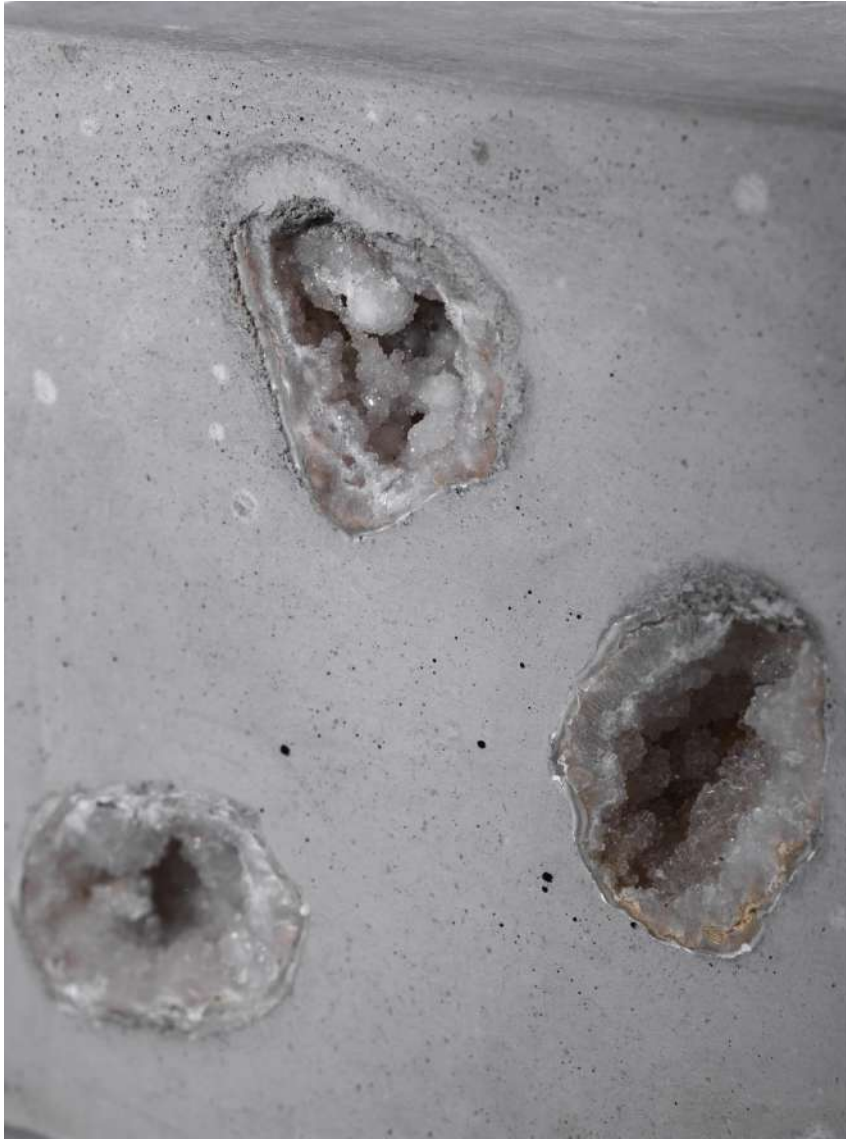
7.09 H x 7.09 x 7.09 inches

18 H x 18 x 18 cm

(JC10)

\$9,000







Jean-Baptiste Caron

Always Try to Keep a Piece of Sky Above Your Life, 2023

Mirror, anti-fog treatment, LED, aluminum, wood

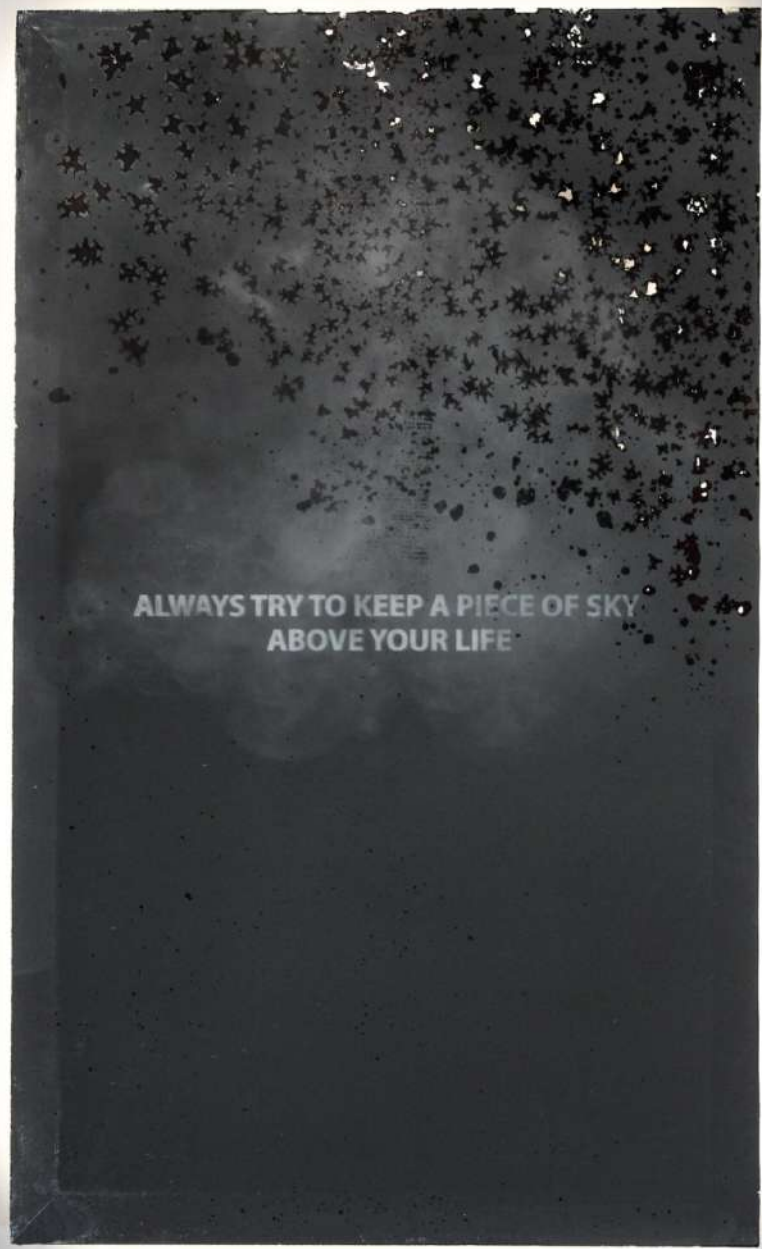
33.27 H x 20.08 inches

84.5 H x 51 cm

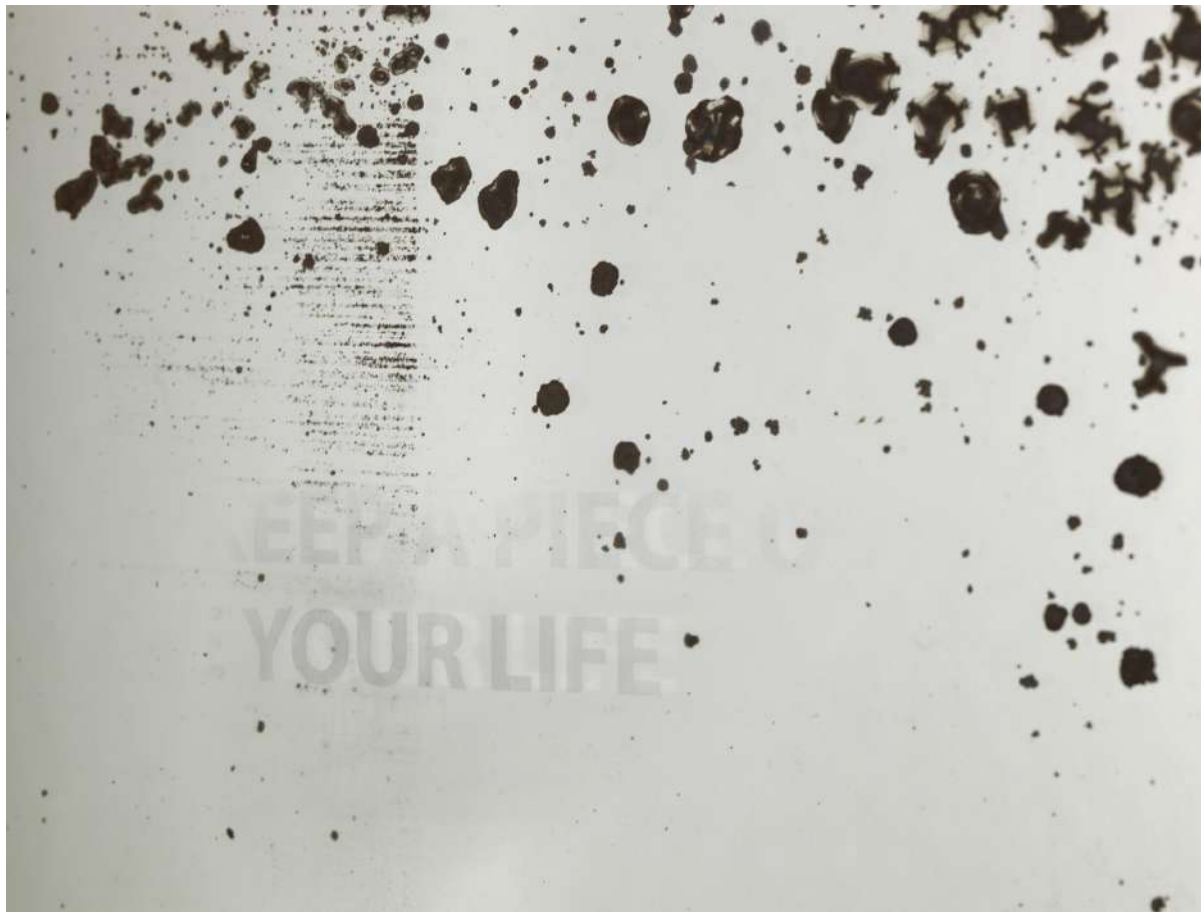
Unique work

(JC0003)

\$14,000



ALWAYS TRY TO KEEP A PIECE OF SKY
ABOVE YOUR LIFE



Jean-Baptiste Caron

Untitled (Dans la mesure du saisissable series), 2015

Concrete, wax, metal

12.6 H x 18.11 x 1.97 inches

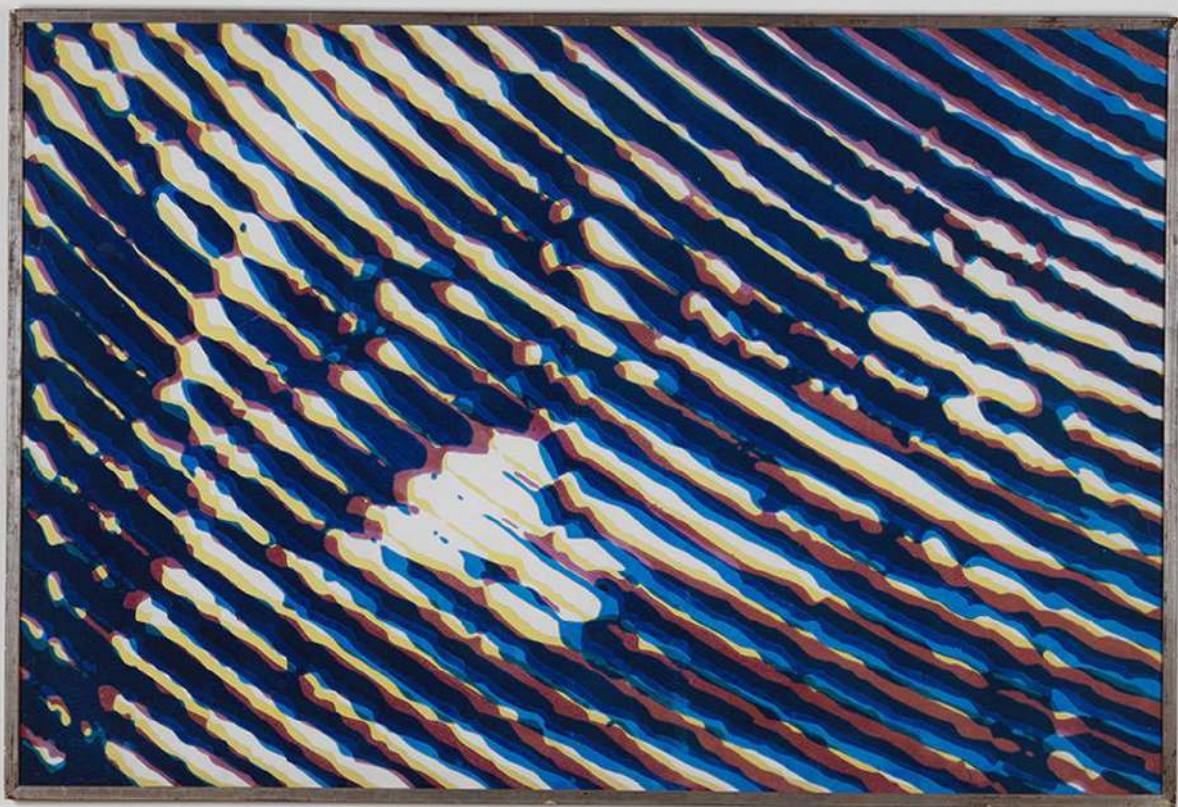
32 H x 46 x 5 cm

(JC0017)

\$8,000







Alain Jacquet

DS Engine, 1967

Acrylic on Plexiglas

49.41 H x 73.43 inches

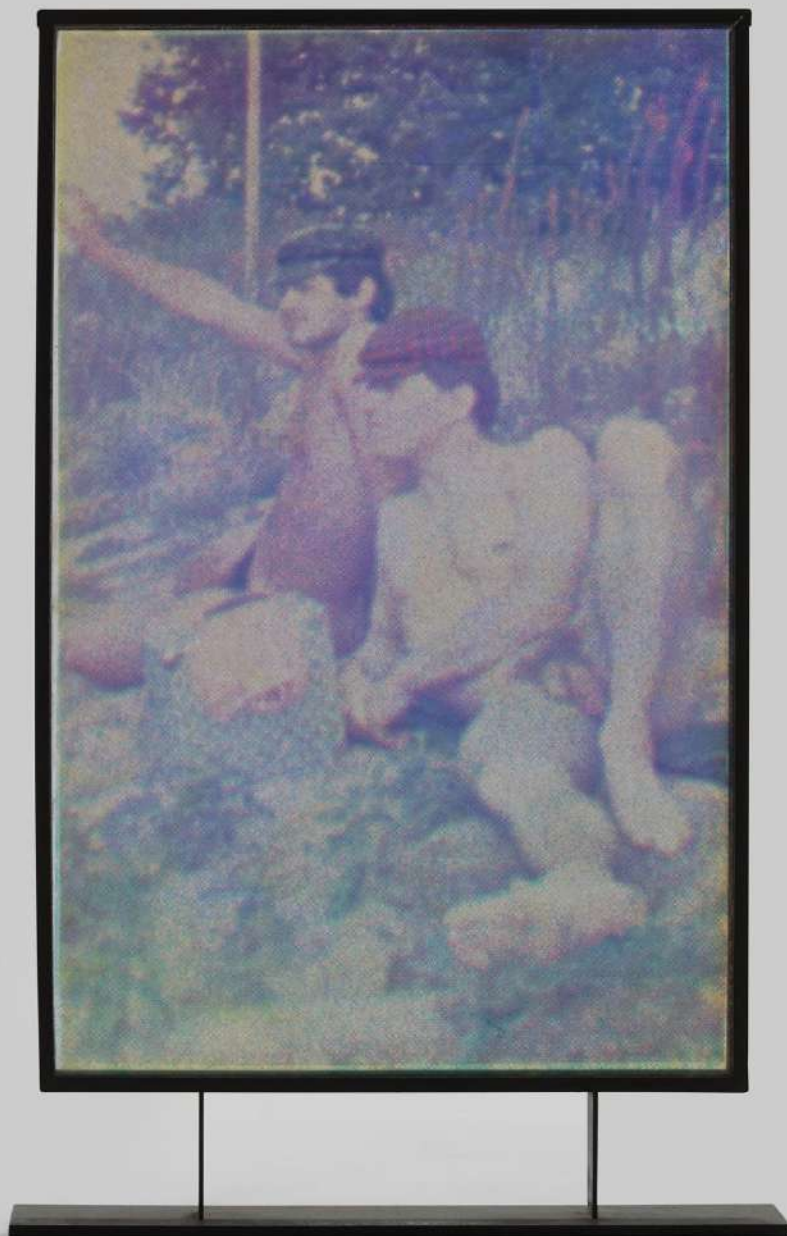
125.5 H x 186.5 cm

(AJ20)

Provenance:

Collection Daniel Varenne, Geneva.

\$90,000



Alain Jacquet

*Thomas Eakin's Swimming Hole,
Detail, c. 1966-1968*

Serigraphs on Plexiglas, metal
surround and base

Screenprints:

33.27 H x 21.65 inches

84.5 H x 55 cm

Mounted:

37.4 H x 21.65 x 2.36 inches

95 H x 55 x 6 cm

Labeled underside: AJ-TED/PLEX-66

-68-1

(AJ0015)

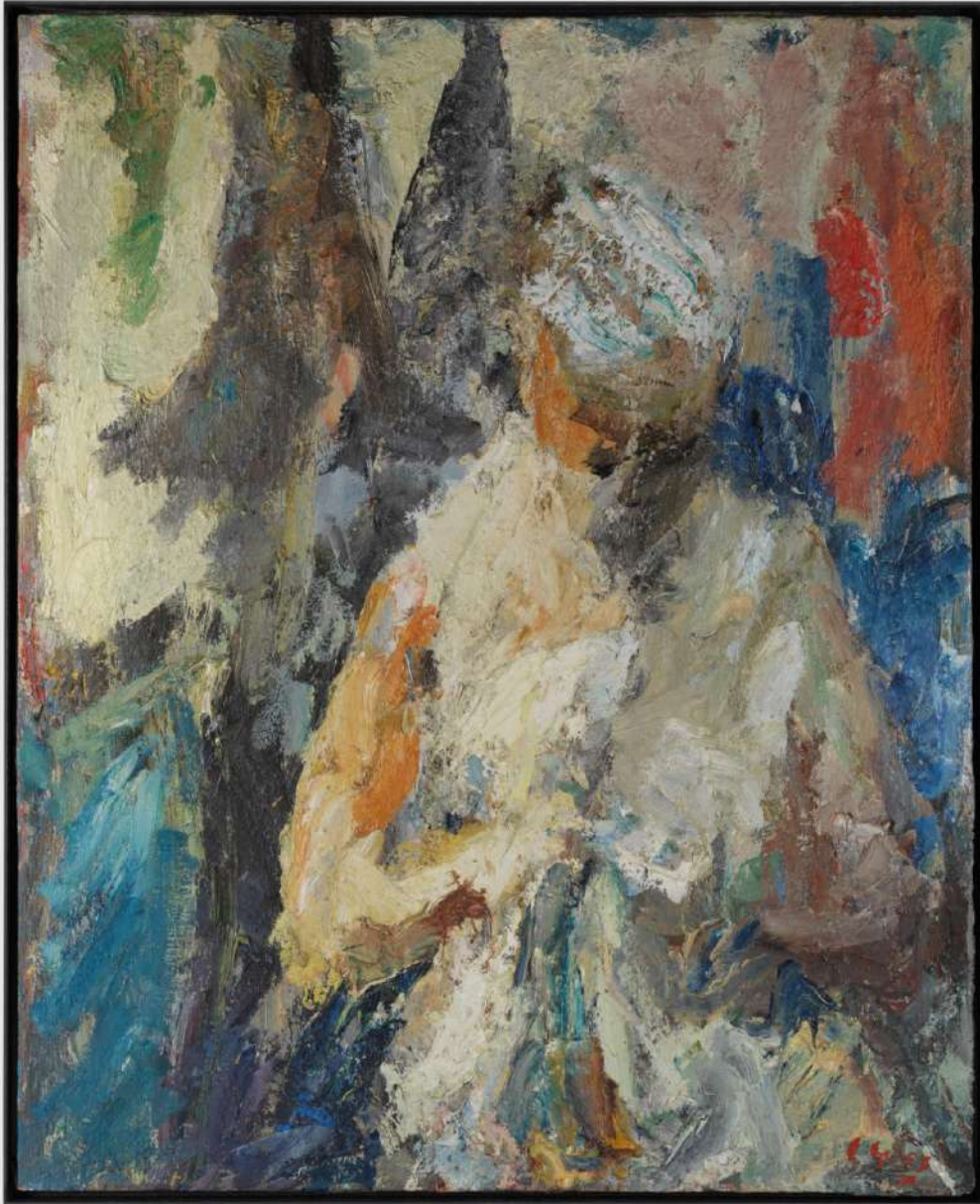
Provenance:

Galerie Loft, Paris

Galerie Michel Vidal, Paris

\$40,000





Eugène Leroy

Untitled (Maternité), c. 1959

Oil on canvas

39.37 H x 31.89 inches

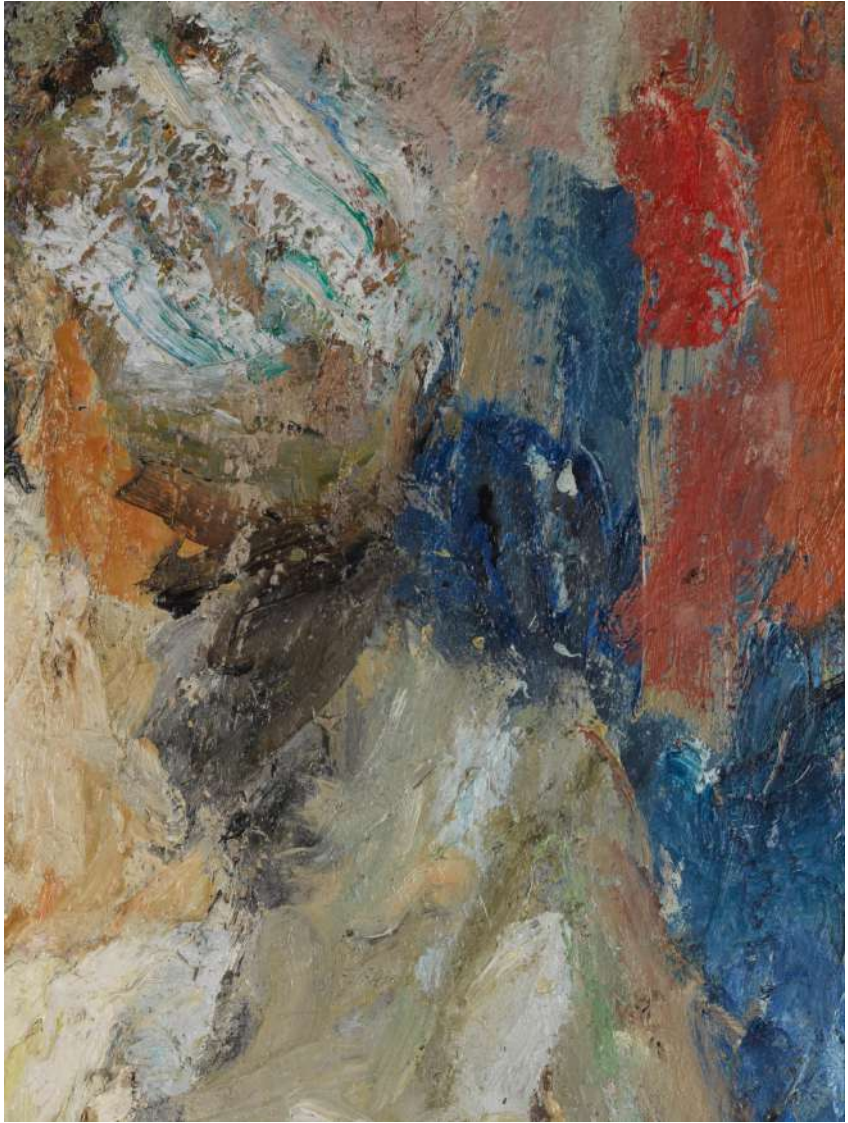
100 H x 81 cm

Signed and dated lower right
(EL0029)

Provenance:

Private collection, Brussels.

\$85,000





Eugène Leroy

Maison au Toit Rouge, c. 1950s

Oil on canvas

19.69 H x 23.62 inches

50 H x 60 cm

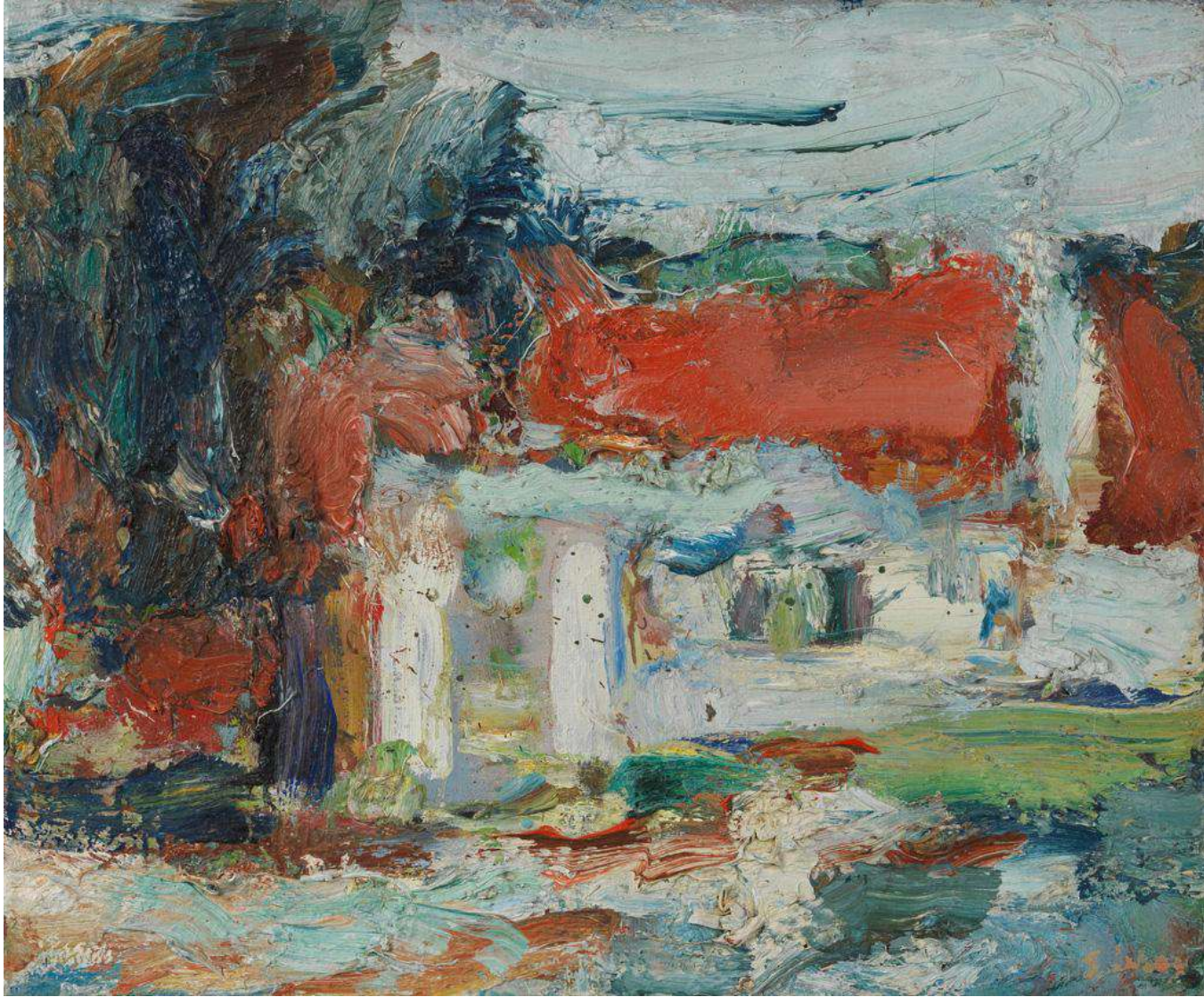
Signed lower right

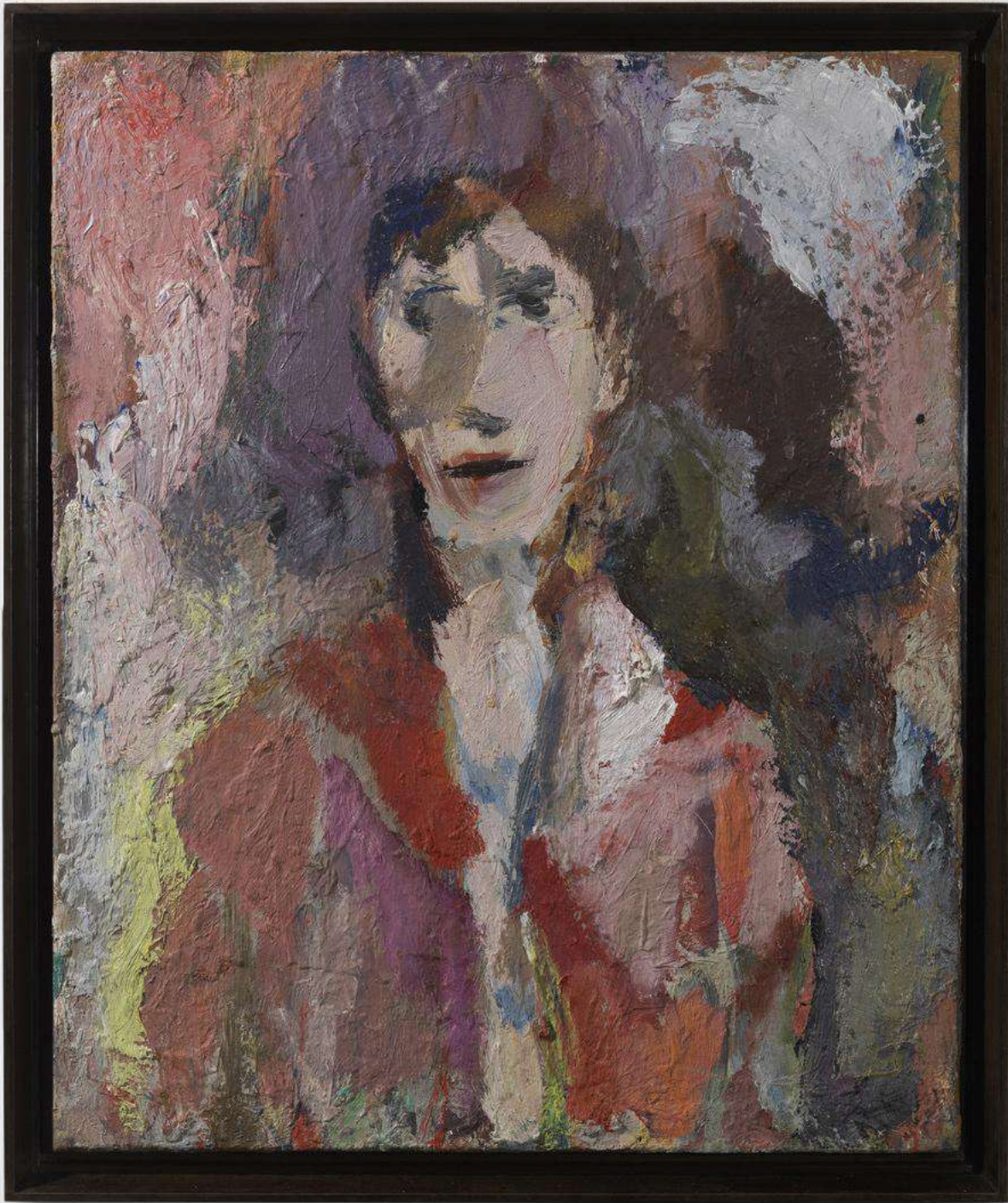
(EL0004)

Provenance:

Private collection, Belgium

\$55,000





Eugène Leroy

Portrait de Valentine, 1954

Oil on canvas

25.59 H x 21.26 inches

65 H x 54 cm

Signed and dated "E. Leroy 54"

Inscribed en verso "Eugène Leroy
portrait Valentine (1954)"

(EL0012)

Provenance:

Private collection, Baden-Wurttemberg, Germany

\$48,000

Antoine Vollon

Bouquet de Fleurs, c. 1875

Oil on canvas

21.26 H x 17.32 inches

54 H x 44 cm

Framed: 28.4 H x 23.6 inches (72 H x

60 cm)

Signed lower right "A. Vollon"

(AVN2)

\$20,000



Sheila Hicks

Let Loose, 2018-2019

Linen, cotton, synthetic fibers

21.65 H x 21.65 x 5.51 inches

55 H x 55 x 14 cm

(SH3233)

\$70,000





Sheila Hicks

Untitled, c. 1968-69

Linen

89 H x 60 inches

226.1 H x 152.4 cm

(SH3257)

Hand-woven at Taller Artesanal Huaquén, Chile

Provenance:

Collection of Maggie Brenner, USA

Purchased from the artist, 1968

\$140,000



César

Nature Morte, 1974

Compressed enameled metal pitcher, wooden support,
Plexiglas case

27.17 H x 23.62 x 1.38 inches

69 H x 60 x 3.5 cm

Signed and dated lower right "César, 1974, Nice"
(C3032)

This work is recorded in the archives of Madame Denyse
Durand-Ruel as number 2120.

Certificate of authenticity available.

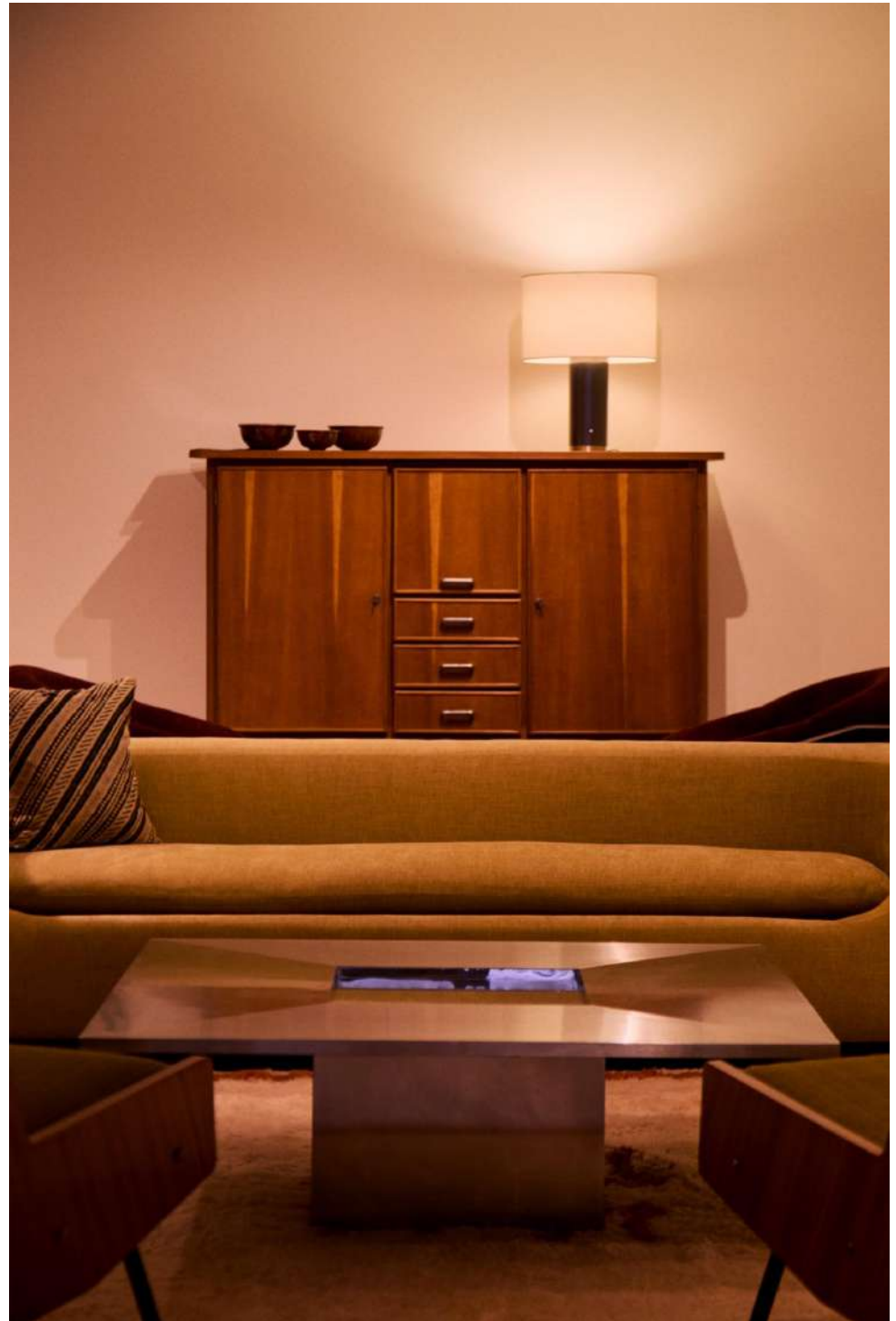
Provenance:

Arts du XXe Siecle, De Baecque et Associés, Paris, 8 Jun.
2021, lot 154.

\$40,000







ABOUT DEMISCH DANANT

Demisch Danant was founded in 2005 by Suzanne Demisch and Stephane Danant. The gallery specializes in twentieth-century French design with an emphasis on the late 1950s through the 1970s and represents the work of Maria Pergay, Pierre Paulin, Jacques Dumond, Joseph-André Motte, Pierre Guariche, Michel Boyer, Antoine Philippon & Jacqueline Lecoq and René-Jean Caillette. Curated exhibitions on historical work are presented within environments that reference architecture and interiors of the era.

The gallery also features exhibitions concerning the intersection of architecture, design and art, including the work of Sheila Hicks and César.

Demisch Danant is dedicated to research and scholarship on French design and has published and authored monographs including *Antoine Philippon and Jacqueline Lecoq*, *Maria Pergay: Complete Works 1957-2010*, *Maria Pergay by François Halard*, and *Maria Pergay: Sketch Book*. Current projects include a comprehensive monograph on seminal designer Joseph-André Motte and a new book about works by Sheila Hicks commissioned for architectural projects.

DEMISCH DANANT
30 W 12th St
New York, NY 10011
T +1 212 989 5750
info@demischdanant.com
www.demischdanant.com