

TEFAF Maastricht

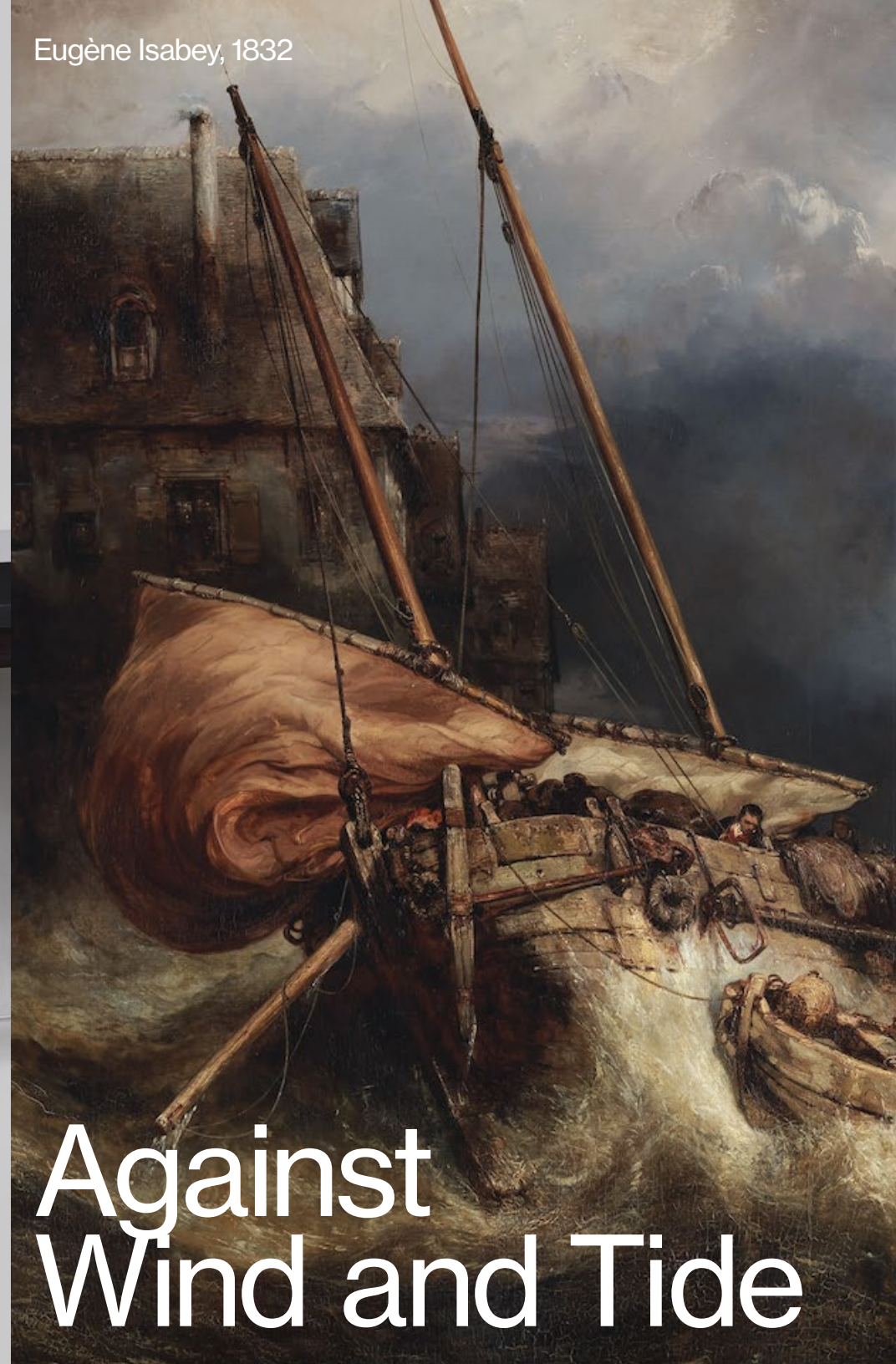
March 11 – 19, 2023

MECC Stand#706



Joseph-André Motte, 1967

Eugène Isabey, 1832



Against Wind and Tide



Salon des Artistes Décorateurs, 1967

This year, Demisch Danant presents a collection of important French furniture design from the 1950s, '60s and '70s; works by Paris-based American artist Sheila Hicks; contemporary pieces by designer Noé Duchaufour-Lawrance; and 19th-century paintings by French artist Eugène Isabey.

The aim of our selection is to bring together major works from designers and artists of different periods within an exhibition that combines classicism and modernity. This genre of décor is largely inspired by Parisian apartments of the '60s, where most of the works that hung on the walls had been inherited from older relatives. Under the influence of interior decorators such as Henri Samuel or Charles Sévigny, Parisians gradually began to incorporate contemporary furniture and art into their traditional surroundings.

In this vein, Maria Pergay, who was a talented antiques dealer before she began designing steel furniture at the end of the '60s, has always valued the dialogue between different periods. She brilliantly combined the decorative arts of the past with contemporary furniture and knew how to make objects come alive together, despite the centuries that separated them.

Part of our exhibit is dedicated to the Mobilier National, displaying one of the most beautiful French desks of the 20th century. Commissioned by the Mobilier National in



Eugène Isabey, *Marine par Gros Temps*, 1832

1967 from Joseph-André Motte, the *Senior Civil Servant's Desk* prototype was created by Mobilier National's Atelier de Recherche et de Création workshops. In the booth, facing this desk, is a pair of *léna armchairs* by Pierre Paulin, commissioned in 1985 for the hypostyle hall of the Economic, Social and Environmental Council in the Palais d'Iéna.

The Mobilier National ensemble is completed by two major works by Paris-based American artist Sheila Hicks, including a 1966 Prayer Rug.

The interior of our stand reconstitutes an art salon. Erected on a Versailles parquet floor stands a series of display panels, on which hang masterpieces by Eugène Isabey (1803–1886): *Seascape in stormy weather* (1832) and *Sailors saluting Christ as they leave the port of Saint-Valery-en-Caux* (1867). Beneath the Isabey paintings are Maria Pergay's iconic daybed, as well as a unique corner couch by Gilbert Poillerat, commissioned by interior decorator René Prou for the house of clients in Neuilly-sur-Seine in 1960.

In this section of the booth are also recent pieces from Noé Duchaufour-Lawrance; a console table in cork, a stool from the *Burnt Cork* collection, and a Madonna del Monte coffee table with a cross-shaped steel base on which sits a sculpted glass plate that evokes ripples of water on the surface of a lagoon.



Beyond is a spectacular wall-mounted vanity by Joseph-André Motte in champagne-coloured anodised aluminum, a private commission for a Parisian apartment in 1965. Also noteworthy is the extremely rare *Portrait Seat - Charles de Gaulle* by Roger Tallon and César, commissioned in 1967 for the Orly Airport Christmas nativity scene.

This exhibit is a triple tribute; to the Mobilier National and the support it gave to French design between 1967 and 1987, to Maria Pergay and her talent both as an artist and as an interior decorator, and finally, to the painter Eugène Isabey, part of the Romantic movement. He was considered one of the great seascape painters of his time, but unfortunately has since sunk into obscurity, like so many other artists of the 19th century. The title, *Against Wind and Tide*, is inspired by Isabey's seascapes, known for their orchestration of magnificent scenes of storms and shipwrecks. It is also a means of acknowledging the perseverance of the creators seen here, who managed to impose their ideas and talents against all odds.

Maria Pergay



Maria Pergay

Daybed, c. 1973

Stainless steel, wood,
foam, fabric, casters

10.63 H x 118.11
x 33.46 inches

27 H x 300 x 85 cm

Provenance:

Private Commission, Cannes

Literature:

Demisch, Suzanne. *Maria Pergay: Between Ideas and Design*. New York, Demisch Danant, 2006, pp. 30, 44. Print. Demisch, Suzanne, and Stephane Danant. *Maria Pergay: Complete Works 1957-2010*. Bologna, Damiani, 2011, Similar example reproduced pp. 113, 192, no. 22B. Print.





TEFAF Maastricht

March 11–19, 2023

Maria Pergay

*Lampe Cerf/
Deer Lamp, Pair, 1965*

Plated bronze

25.25 H x 17 x 10 inches

64.1 H x 43.2 x 25.4 cm

Base:

15.35 H x 4.65 inches
(39 H x 11.81 cm)

Shade:

14.875 x 8.75 inches
(38 x 22 cm)

Literature:

Demisch, Suzanne and Stephane
Danant. *Maria Pergay: Complete
Works 1957-2010*. Bologna, Damiani,
2011, p. 47, numbered O42. Print.



Eugène Isabey



Eugène Isabey

*Matelots Saluant le Christ
en Sortant du Port de
St.Valery-en-Caux, 1867*

Oil on canvas

64.9 H x 94.5 inches

164.8 H x 240 cm

Framed:

75 H x 106.5 inches
(190.5 H x 270.5 cm)

Signed and dated lower
left «E. Isabey, 1867»

Provenance:

French Government, Stored
at the Louvres until 1881 Sale
Empress Eugénie, 21 Apr. 1881, Hôtel
Drouot, Paris, Lot N°46 Sold,
10 Dec. 1920, Hôtel Drouot, Paris,
Lot N°89 Sold, 4 Dec. 1977, Versailles
Kurt E. Schon Galleries, New Orleans,
Louisiana Private collection,
Houston, Texas

Exhibited:

Paris Salon of 1867, No. 778
in the Louvres Archives Nationale.

Literature:

Miquel, Pierre. Eugène Isabey
1803-1886, La Marine au XIX^e siècle.
Mauris-La-Jolie, Édition de la
Martinelle, 1980, Vol. I, pp. 162 -164,
illustrated no. 87; Vol. II, pp. 198, 234,
illustrated no. 1363D. Print.





Gilbert Poillerat



Gilbert Poillerat

Corner Sofa, 1960

Polished nickeled brass,
gold varnished glides,
foam, fabric

25.2 H x 118.9
x 82.68 inches

64 H x 302 x 210 cm

Seat height:
17.3 inches (44 cm)

Unique work

Provenance:

Commissioned by Jean-René Prou
for the apartment of Mr. and Mrs. R.
in Neuilly-sur-Seine, France,
1957-1961. Thence by descent.





Gilbert Poillerat

Coffee Table, 1960

Gilt and nickered brass,
tempered glass

17.72 H x 47.24
x 25.59 inches

45 H x 120 x 65 cm

Unique work

Provenance:

Commissioned by Jean-René Prou
for the apartment of Mr. and Mrs. R.
in Neuilly-sur-Seine, France, 1957-1961.
Thence by descent.





Eugène Isabey

La Saint Hubert, c. 1870

Oil on panel

63.78 H x 47.72 inches

162 H x 121.2 cm

Framed:

73.5 x 56 inches

(186.7 x 142.2 cm)

Signed lower right «Isabey»

Provenance:

The artist's studio (sold at Galerie Georges Petit, March 30-31, 1887, lot 2) Galerie Georges Petit, Paris (acquired at the above sale) George I. Seney, New York (sold at the American Art Association, February 11-13, 1891, lot 307) T.C. Farrer (acquired at the above sale) Geraldine Rockefeller Dodge (acquired from Rousuck and sold, Parke-Bernet, New York, May 14, 1976, lot 48) Saint Hubert's Animal Welfare Center (acquired at the above sale)

Literature:

Miquel, Pierre. *Eugène Isabey 1803-1886, La Marine au XIX^e siècle. Maurs-La-Jolie*, Editions de la Martinielle, 1980, Vol. I, p. 171, illustrated no. 93; Vol. II, p. 235, illustrated no. 1364D. Print. Secord, William. *Dog Painting, The European Breeds*. Woodbridge, Suffolk, 2000, Illustrated p. 321. Print.



Eugène Isabey

*Bucherons Près
de la Rivière, 1848*

Oil on canvas

23.23 H x 32.28 inches

59 H x 82 cm

Framed: 31.7 H x 40 inches
(80.5 H x 101.5 cm)

Signed lower left
«E. Isabey, 1848»

Provenance:

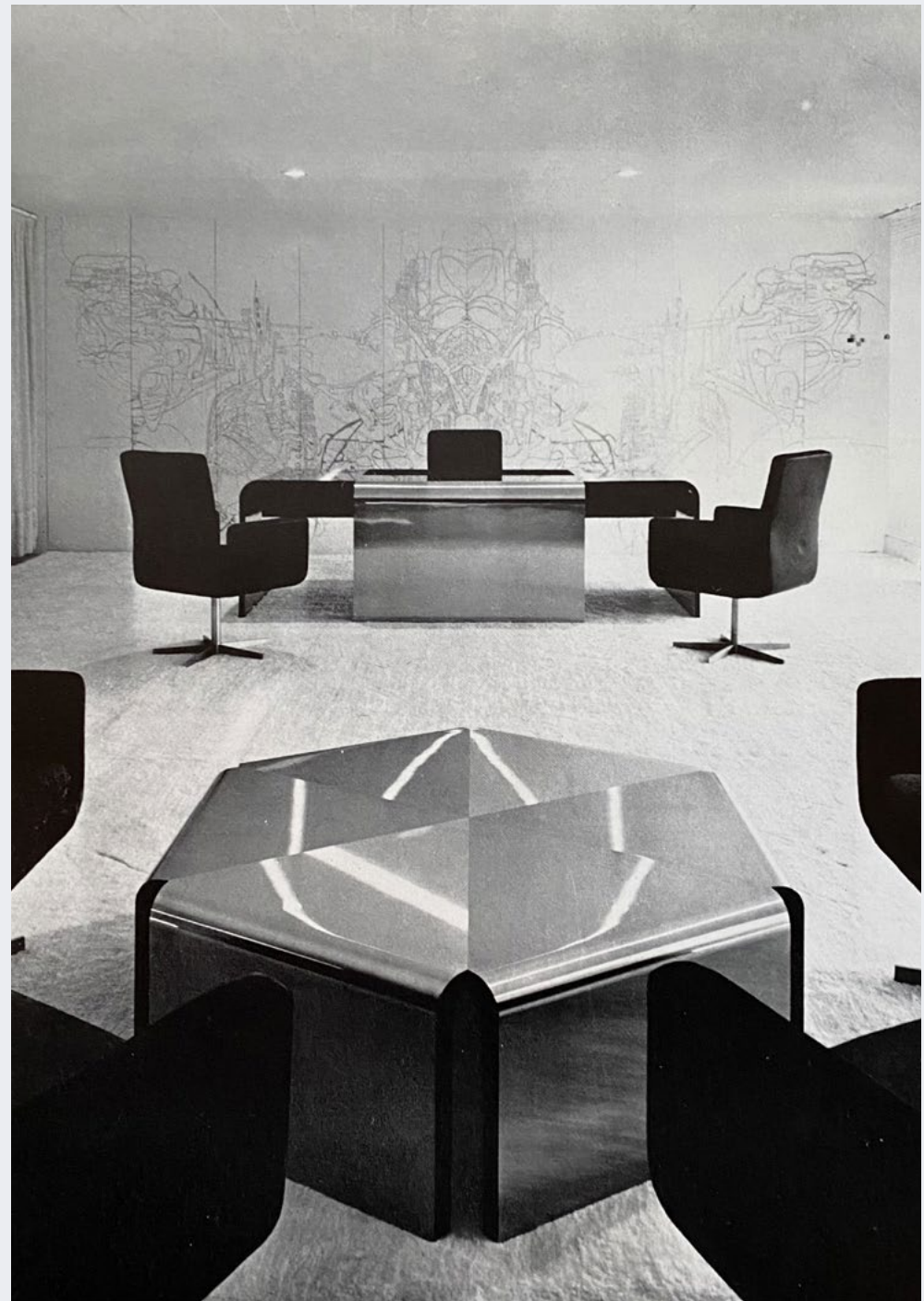
Private collection, Paris
Etienne Bréton, Saint-Honoré
Art Consulting, Paris

Literature:

Miquel, Pierre. *Eugène Isabey
1803-1886, La Marine au XIX^e siècle.*
Mauris-La-Jolie, Édition de la
Martinelle, 1980, Vol. II, p. 197,
no. 1065D. Print.



Joseph-André Motte



Salon des Artistes Décorateurs, 1967

Joseph-André Motte

Senior Civil

Servant's Desk, 1967

Stainless steel,
Macassar ebony, leather

29.53 H x 94.49
x 35.43 inches

75 H x 240 x 90 cm

Prototype Mobilier National

Exhibited:

French Pavilion, 1967 International
and Universal Exposition, Montréal.

Literature:

Favardin, Patrick. *Les Décorateurs
des années 50*. Paris, Éditions
Norma, 2002, p. 261. Print.

Forest, Dominique. *Mobi Boom:
L'explosion du design en France
1945-1975*. Paris, Editions Les Arts
Décoratifs, 2010, Similar example
reproduced p. 177. Print.

Jankowski, Michel, and Victor Vasarely. *L'Art de Vivre*, Catalog for the
45th Salon des Artistes Décorateurs.
Paris, Édition Michel Jankowski, 1968.
Similar model reproduced p. 9. Print
Mobilier National, 20 ans de création.
Paris, Edition Centre De Creation
Industrielle / Centre Georges Pompidou,
1984, p. 35. Print. *L'atelier de
recherche et de création du Mobilier
National (1964-2000): plaidoyer
pour le mobilier contemporain*.
Edition Galerie nationale de la tapis-
serie, Beauvais, 2001, p. 14. Print







TEFAF Maastricht

March 11–19, 2023



Office of the Prefect of Val d'Oise, 1968

TEFAF Maastricht

February 23 – April 01, 2023

Antoine Philippon and Jacqueline Lecoq



Salon des Artistes Décorateurs, 1967

Antoine Philippon
and Jacqueline Lecoq

'Confort' Desk Chair,
Model 3001 T8, 1964

Cast aluminum,
molded plywood, veneer,
foam, fabric

30.31 H x 24.8
x 25.59 inches

77 H x 63 x 65 cm

Seat height:
18.9 inches (48 cm)

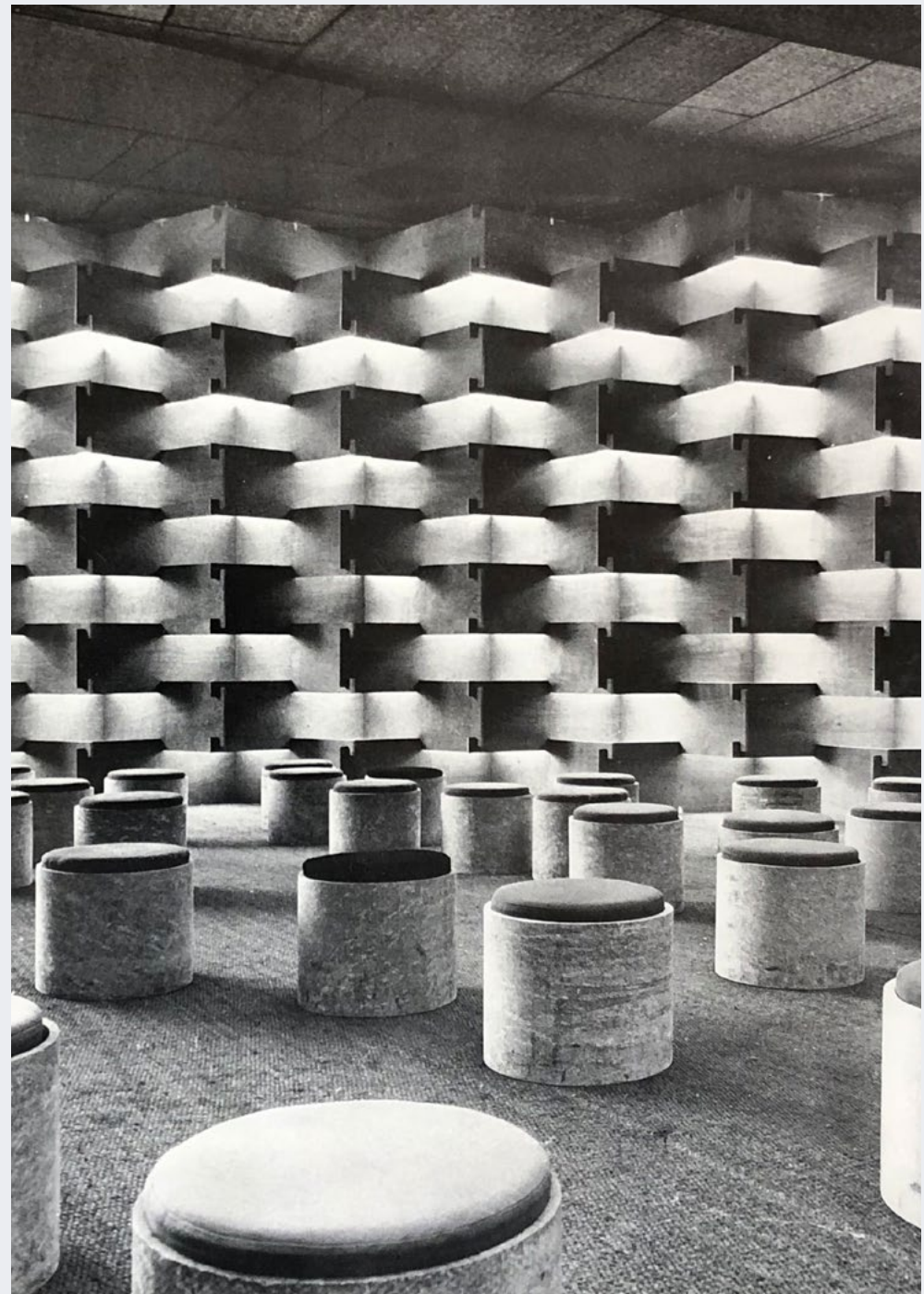
Edition
Les Huchers-Minvielle

Literature:

Forest, Dominique. *Mobi Boom :
L'Explosion du Design en France 1945-
1975*. Paris, Les Arts Décoratifs, 2010,
Similar example reproduced p. 160.
Print. Danant, Stéphane. *Antoine
Philippon and Jacqueline Lecoq*.
Translated by Elizabeth G. Heard, New
York, Demisch Danant, 2011, Similar
examples reproduced pp. 63-65. Print.



Charles Zublana



Salon des Artistes Décorateurs, 1967

Charles Zublena

Stool, 1967

Eternit cement, wood,
foam, textile

14.96 H x 17.32 D inches

38 H x 44 D cm

Provenance:

Collection of
Max Garnault, France

Exhibited:

45th Salon des Artistes
Décorateurs: L'Art de Vivre. 1967,
Grand Palais, Paris.

Literature:

Jankowski, Michel, and Victor
Vasarely. *L'Art de Vivre, Catalog
for the 45th Salon des Artistes
Décorateurs*. Paris, Édition Michel
Jankowski, 1968. Similar model
reproduced p. 97. Print.



Joseph-André Motte

Vanity, 1965

Anodized aluminium,
mirror, Formica, Santos
palissander, glass

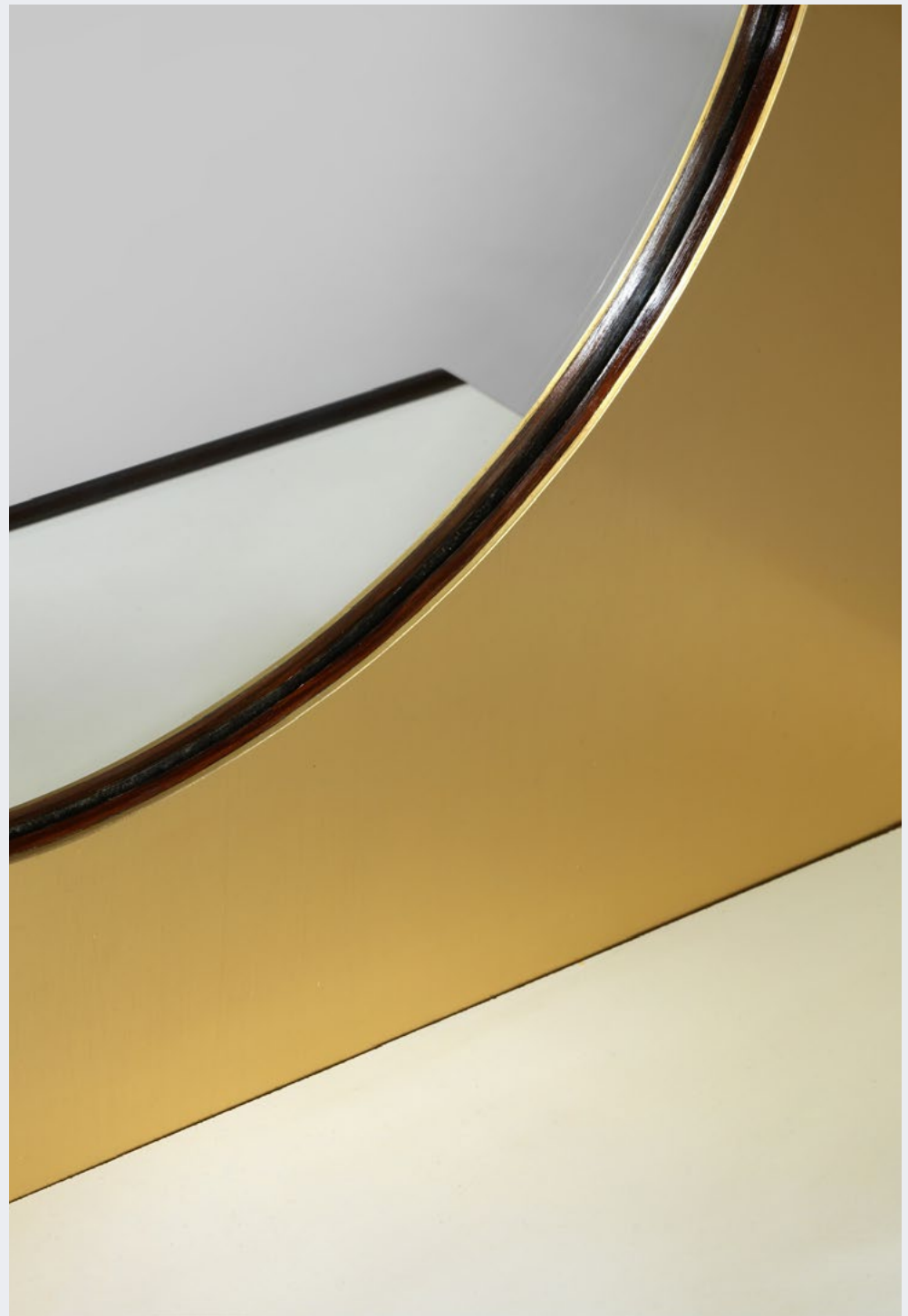
106.69 H x 39.37
x 15.75 inches

271 H x 100 x 40 cm

Provenance:

Private commission, Paris

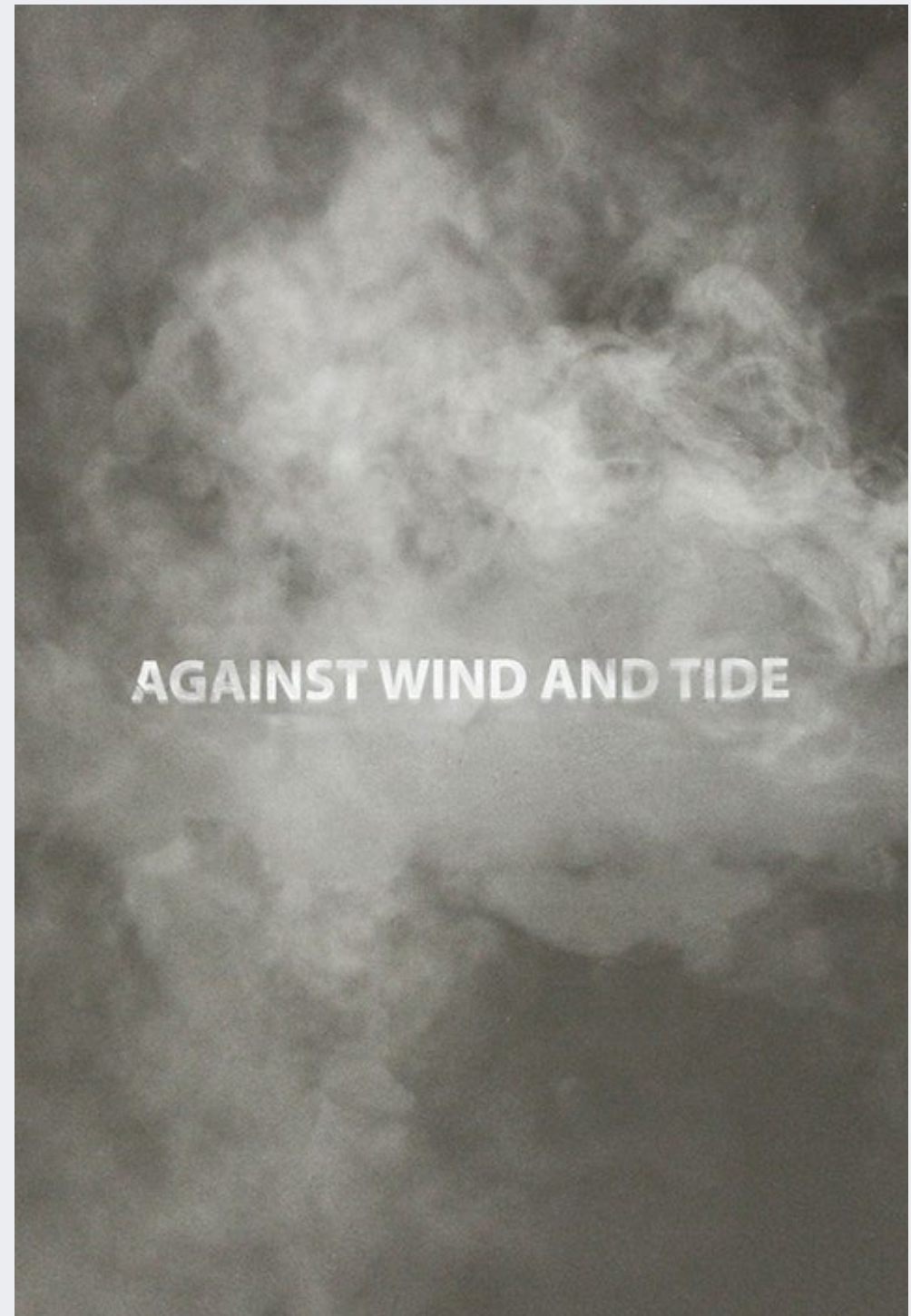




TEFAF Maastricht

March 11–19, 2023

Jean-Baptiste Caron



Jean-Baptiste Caron

*Against Wind
and Tide, 2023*

Mirror, anti-fog treatment

25.59 D inches 65 D cm

Edition of 2



Jean-Baptiste Caron

*Always Try to Keep
a Piece of Sky Above
Your Life, 2023*

Mirror, LED

39.17 H x 27.36 inches

99.5 H x 69.5 cm

Unique work



TEFAF Maastricht

March 11–19, 2023

Eugène Isabey

Marine, 1864

Oil on panel

9.72 H x 14.25 inches

24.7 H x 36.2 cm

Framed:

17.8 H x 19.5 inches
(37.5 H x 49.5 cm)

Signed and dated lower
right «E. Isabey, 64»

Provenance:

Private collection, England



Eugène Isabey

Retour des Pêcheurs, 1863

Oil on canvas

19.88 H x 27.56 inches

50.5 H x 70 cm

Framed:

25.6 H x 33.5 inches
(65 H x 85 cm)

Signed and dated
«E. Isabey, 63»

Provenance:

Private collection, Switzerland

Literature:

Miquel, Pierre. *Eugène Isabey
1803-1886, La Marine au XIX^e siècle.*
Mauris-La-Jolie, Édition de la
Martinelle, 1980, Vol. II, p. 287,
illustrated no. XLI. Print.





Eugène Isabey

*Voiliers sur une
Mer Agitée*, c. 1860

Oil on panel

5.91 H x 8.86 inches

15 H x 22.5 cm

Framed:

13 H x 10.4 inches
(33 H x 26.5 cm)

Monogrammed
lower left «EI»

Provenance:

Private collection, Paris

Galerie La Nouvelle Athènes, Paris



Claude de Muzac

Table Easel, c. 1970

Gilt and nickeled brass

31.89 H x 10.24
x 8.75 inches

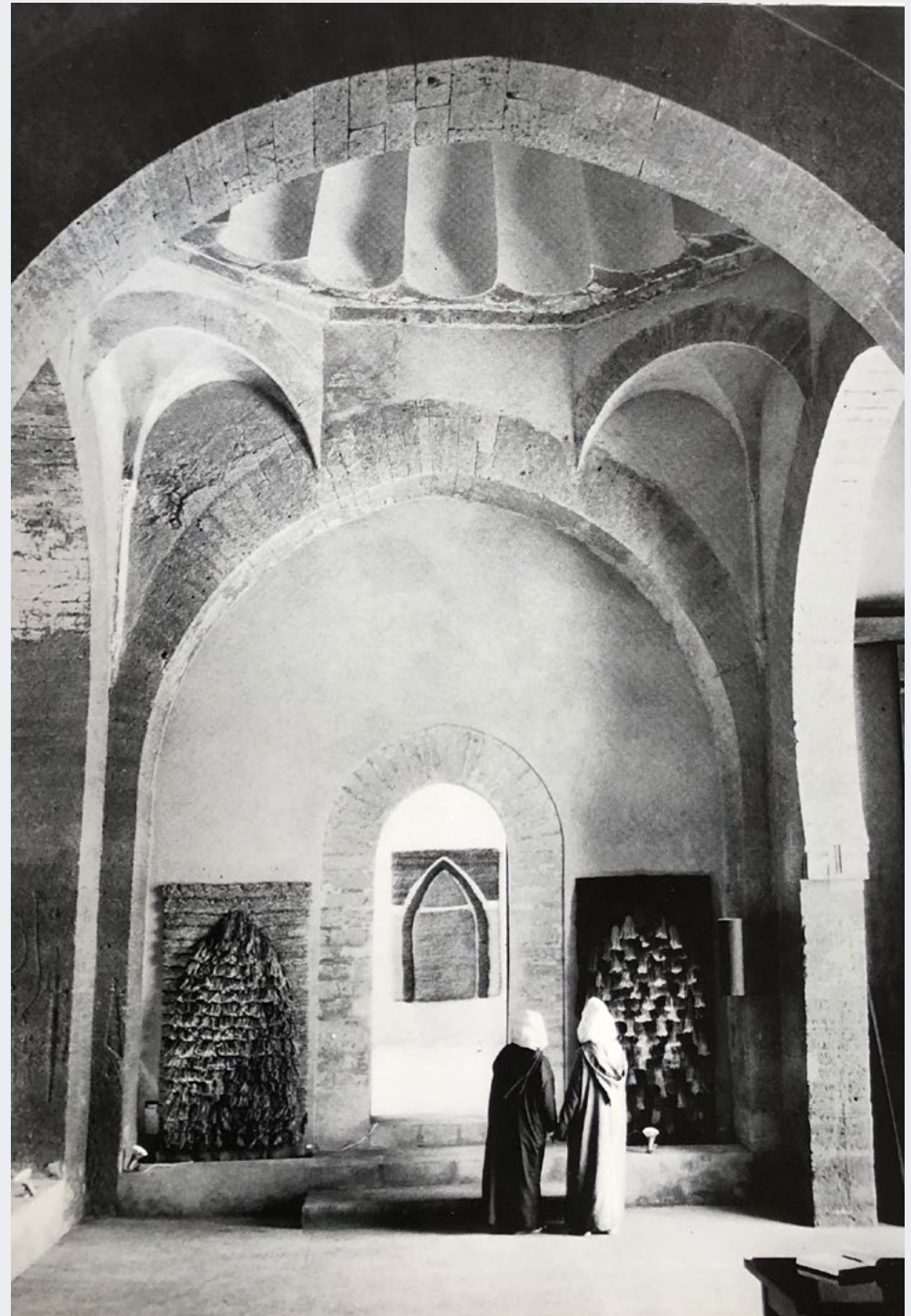
81 H x 26 x 22.2 cm

Literature:

Bony, Anne. *L'Art de la
Métamorphose*. Paris, Edition Piasa,
2015, pp. 6-7. Print.



Sheila Hicks



Sheila Hicks

Prayer Rug, c. 1966

Wool, linen

74.8 H x 43.31
x 5.91 inches

190 H x 110 x 15 cm

Hand-woven Prototype
Produced by V'SOSKE
Ireland, County Galway

Provenance:

Gift from the artist; Elizabeth
Brydon-Shrock, White Plains, NY, ca.
1970; Jean (Brydon) Kahn Bjanes,
Wilmette, IL, ca. 1992; Doug Kahn
(son of Jean (Brydon) Kahn Bjanes),
Vernon Hills, IL; Gifted to Michael
Heinz, New York, NY, 2019.



Sheila Hicks

Untitled, 1984

Silk and gold thread
embroidery on canvas

39.37 H x 47.24 inches

100 H x 120 cm

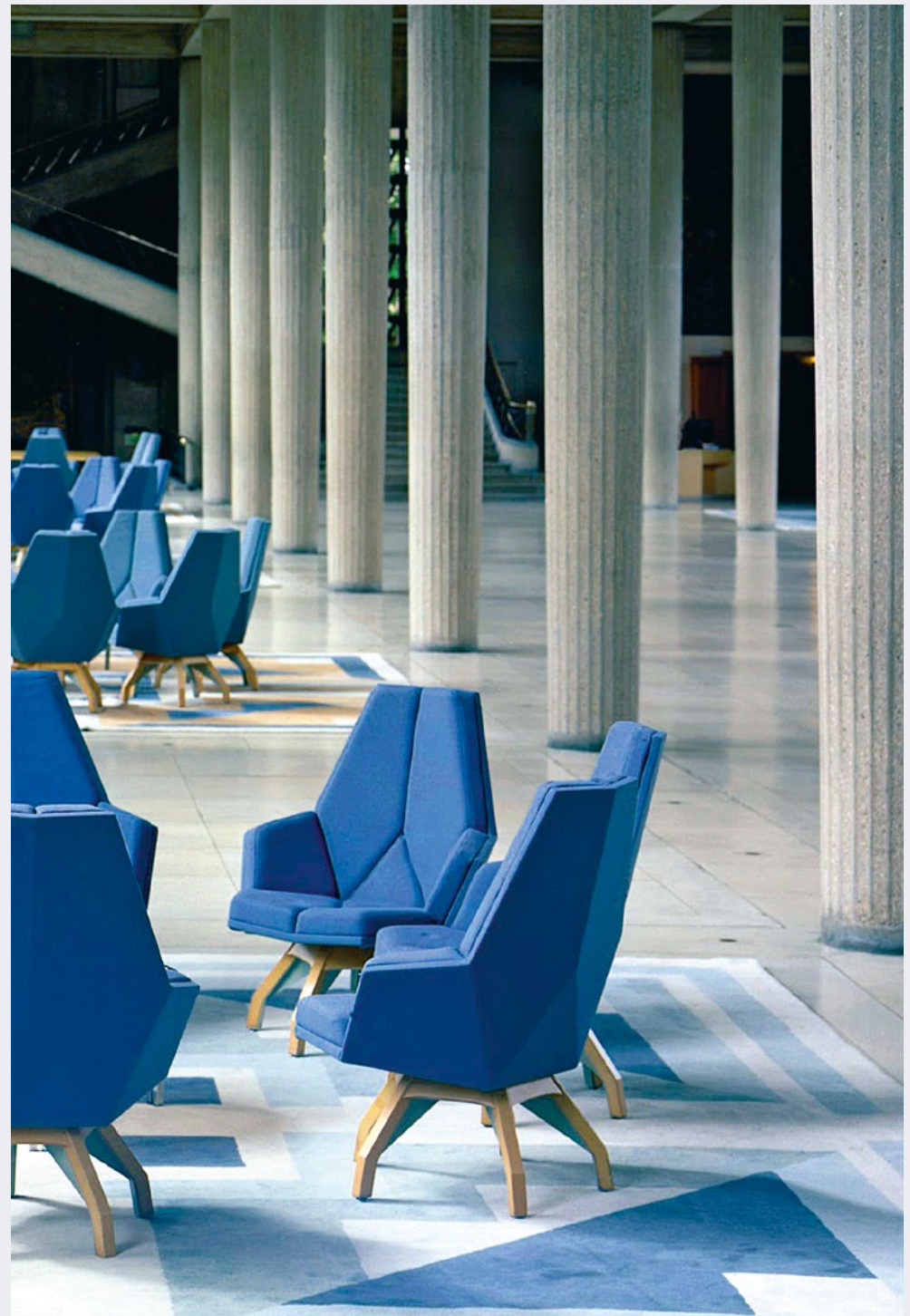
Signed, dated
and inscribed en verso

Provenance:

Commission for Dr. and Mrs. Paul
Marks, New York



Pierre Paulin



TEFAF Maastricht

March 11–19, 2023

Pierre Paulin

Pair of Iena Armchairs,
1985/ 2015

Sycamore, metal,
foam, fabric

40.16 H x 31.5 x 18.9 inches

102 H x 80 x 48 cm

Seat height:
16.5 inches (42 cm)

Numbered Edition
PaulinPaulinPaulin 2015

Design commissioned
by Mobilier National, 1985,
Salle Hypostyle du Conseil
Économique et Social,
Palais de l'Iena, Paris.



Alain Richard
& Jacqueline Iribe

Carpet, c. 1964

Wool

118.11 x 157.48 inches

300 x 400 cm

Manufactured in Rabat

Provenance:

Private commission

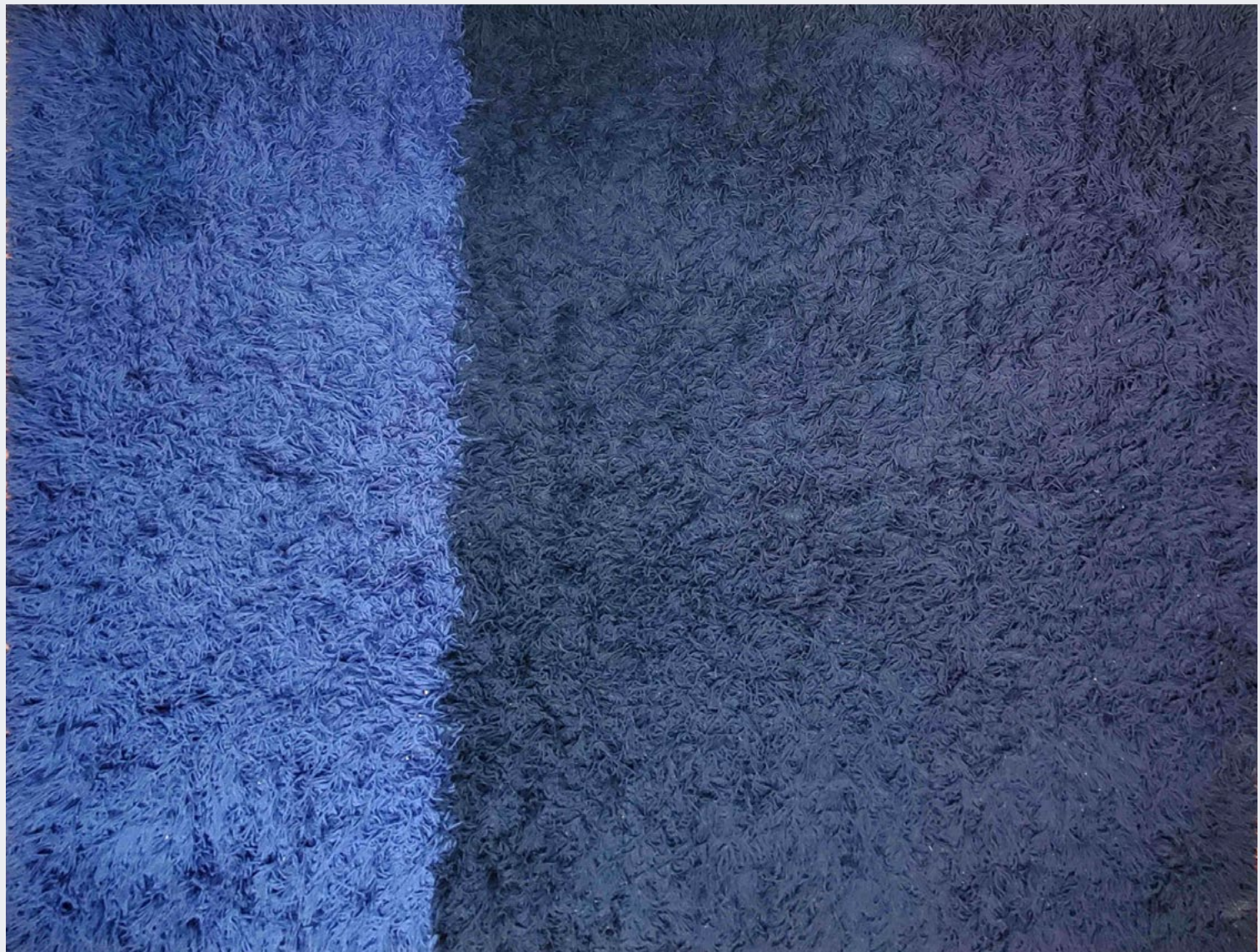
Literature:

l'Oeil. 1964. Print. Favardin, Patrick.

Les Décorateurs des années 50.

Paris, Éditions Norma, 2002,

p. 285. Print.



César & Roger Tallon



César & Roger Tallon

*Charles de Gaulle
Portrait Seat, 1967*

Painted beech,
photographic print,
aluminum, casters

54.13 H x 21.65
x 25.98 inches

137.5 H x 55 x 66 cm

Unique Commission

Provenance:

Nativity Scene, 1967, Orly airport,
Paris. Camard et associés Design
sale, March 27, 2006, lot 37, Paris.
Galerie Jousse Entreprise, Paris.
Collection Daniel Lebard, France.

Literature:

de Bures, Gilles. *Le Mobilier Français
1965-1979 (Intérieurs.)*. Paris, Éditions
du Regard, 1983, p. 10. Print.

Jousse, Matthias. *Roger Tallon*. Paris,
Jousse Entreprise Éditions, 2012,
pp. 45, 47. Print.

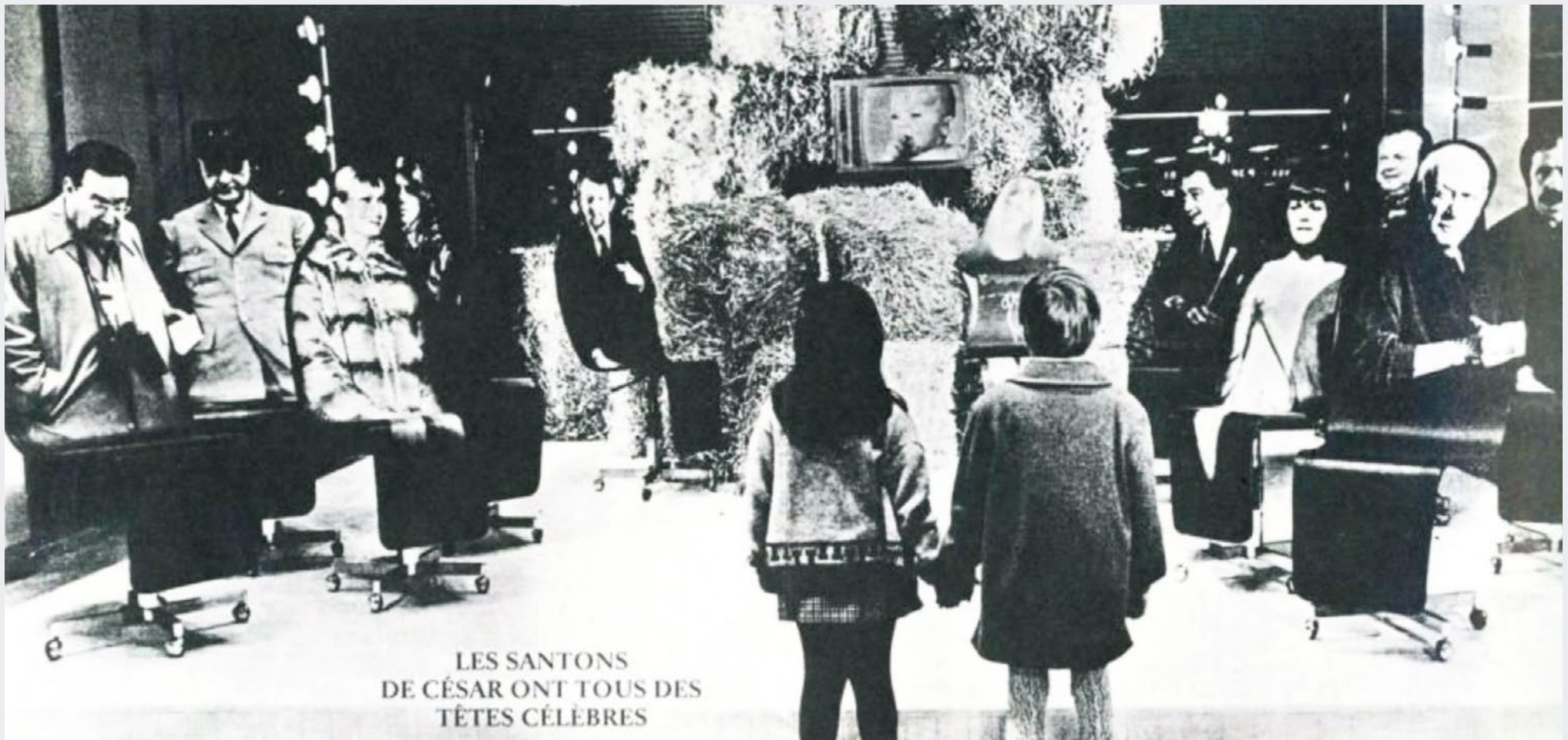
Forest, Dominique and Françoise
Jollant- Kneebone. *Roger Tallon,
Le Design en Mouvement*. Paris,
Musée des Arts Décoratifs, Paris,
8 Sep. 2016 - 8 Jan. 2017, p. 76. Print.





TEFAF Maastricht

March 11–19, 2023



Nativity scene installation by César, Orly airport, 1967

Noé Duchaufour-Lawrance



TEFAF Maastricht

March 11–19, 2023

Made In Situ by
Noé Duchaufour-Lawrance

Burnt Cork Stool, 2021

Untreated
agglomerated cork

17.72 H x 16.54
x 15.75 inches

45 H x 42 x 40 cm

Edition 06
Numbered series



Made In Situ by
Noé Duchaufour-Lawrance

Burnt Cork Console, 2023

Cork

37.4 H x 55.12
x 14.02 inches

95 H x 140 x 35.6 cm

Edition 01
Numbered series



TEFAF Maastricht

March 11–19, 2023



Noé Duchaufour-Lawrance

Madonna del Monte
Coffee Table, 2021

Metal, glass

14.17 H x 39.37
x 27.56 inches

36 H x 100 x 70 cm

Edition of 5, with 1 AP
Artist's Proof Engraved
on base





Noé Duchaufour-Lawrance

Ancrage Totem Chair, 2022

Bronze

26.57 H x 24.41
x 27.17 inches

67.5 H x 62 x 69 cm

Seat height:
11.8 inches (30 cm)

Edition of 8, with 4 AP

Artisan Yann Pronier



TEFAF Maastricht

March 11–19, 2023



TEFAF Maastricht

March 11–19, 2023

Noé Duchaufour-Lawrance

Retro Lamp

Bronze

13.58 H x 14.96
x 4.72 inches

34.5 H x 38 x 12 cm

Edition Maison Intègre



TEFAF Maastricht

March 11–19, 2023



Eugène Isabey

Barques Échoués, c. 1833

Watercolor and
gouache on paper

27.95 H x 17.32 inches

71 H x 44 cm

Framed:

42.5 H x 30.7 inches
(108 H x 78 cm)

Signed lower right
«Eugène Isabey»

Provenance:

Private collection, Switzerland

Literature:

Miquel, Pierre. *Eugène Isabey
1803-1886, La Marine au XIX^e siècle.*
Maurs-La-Jolie, Édition de la
Martinelle, 1980, Vol. II, p. 211, n°1184
illustrates an oil on canvas of the
same subject. Print.





Eugène Isabey

*Radoub d'une Barque
à Marée Basse, c. 1833*

Ink, ink wash,
and pencil on paper

12.2 H x 9.45 inches

31 H x 24 cm

Framed:

21.7 H x 19.1 inches
(55 H x 48.5 cm)

Signed lower left
«E. Isabey»

Provenance:

Private collection, Paris
Stephane Renard Fine Art, Paris

Literature:

Miquel, Pierre. *Eugène Isabey 1803-1886, La Marine au XIX^e siècle.*

Mours-La-Jolie, Édition de la Martinielle, 1980, Vol. II, p. 277, n°1740 illustrated as a lithograph. Curtis, n°67





Eugène Isabey

*Port Normand
à Marée Basse, 1857*

Watercolor and
gouache on paper

8.86 H x 11.81 inches

22.5 H x 30 cm

Framed:
16.7 H x 20.5 inches
(42.5 H x 52 cm)

Signed and dated lower
right «E. Isabey, 1857»

Provenance:
Private collection, Paris



André Renou



André Renou
& Jean-Pierre Génisset

*Multi Functional
Cabinet, 1946*

Oak, stained beech,
Formica, glass, painted
metal

68.5 H x 82.28
x 17.72 inches

174 H x 209 x 45 cm

Edition La Crémaillère

Provenance:

Private collection, family of the
original owner

Exhibited:

Salon d'Automne 1946. 4 oct.-10 nov.
1946, Musée des Beaux-arts de la
ville de Paris.

Literature:

Renous, Pascal. «*Portraits de décora-
teurs*» *Revue de l'Ameublement*. 1964,
p. 28. Print.





TEFAF Maastricht

March 11–19, 2023

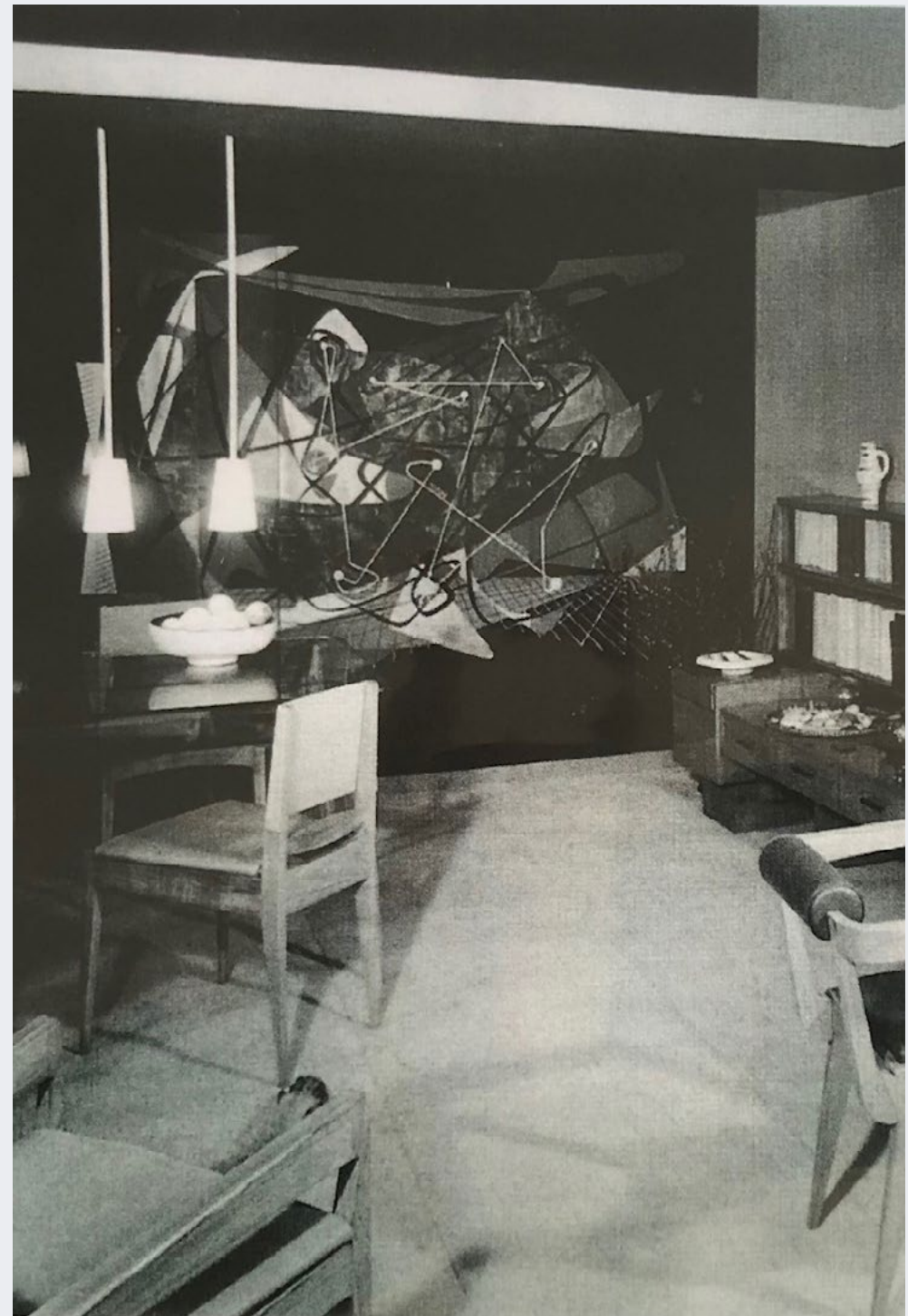


TEFAF Maastricht



March 11–19, 2023

Maurice Pré



Maurice Pré

Pair of Chairs, 1953

Oak, foam, fabric

31.69 H x 17.17
x 19.09 inches

80.5 H x 43.6 x 48.5 cm

Seat height:
18.9 inches (48 cm)

Literature:

Scarpa, Alessandra. *Ensembles mobiliers: Volume 13, 1953*. Paris, Edition Bibliothèque de l'image, 1953. Similar model reproduced. Favardin, Patrick. *Les Décorateurs des années 50. Paris*, Éditions Norma, 2002, p. 114. Print.





TEFAF Maastricht

March 11–19, 2023

Maurice Pre

Pair of Bridge Chairs

31.89 H x 22.83
x 20.47 inches

81 H x 58 x 52 cm

Seat height:
18.9 inches (48 cm)





TEFAF Maastricht

March 11–19, 2023

Eugène Isabey

Marine par
Gros Temps, 1832

Oil on canvas

65.35 H x 102.76 inches

166 H x 261 cm

Framed:

76.8 H x 114.2 inches
(195 H x 290 cm)

Signed and dated lower
right «E. Isabey, 1832»

Provenance:

Private collection, Italy

Exhibited:

Paris Salon of 1833, No. 1281
in the Louvres Archives Nationale.

Literature:

Miquel, Pierre. *Eugène Isabey
1803-1886, La Marine au XIX^e siècle.*
Maur-La-Jolie, Édition de la
Martinelle, 1980, Vol. I, pp. 70 -74,
illustrated no. 30; Vol. II, p. 235,
illustrated no. 1369. Print.







Marine par Gros Temps (details), 1832



About Demisch Danant

Demisch Danant was founded in 2005 by Suzanne Demisch and Stephane Danant. The gallery specializes in twentieth-century French design with an emphasis on the late 1950s through the 1970s and represents the work of Maria Pergay, Pierre Paulin, Jacques Dumond, Joseph-André Motte, Pierre Guariche, Michel Boyer, Philippon & Lecoq and René-Jean Caillette.

Curated exhibitions on historical work are presented within environments that reference architecture and interiors of the era.

The gallery also features exhibitions concerning the intersection of architecture, design and art, including the work of Sheila Hicks and César.

Demisch Danant is dedicated to research and scholarship on French design and has published and authored monographs including *Antoine Philippon and Jacqueline Lecoq*, *Maria Pergay: Complete Works 1957-2010*, *Maria Pergay by François Halard*, and *Maria Pergay: Sketch Book*. Current projects include a comprehensive monograph on seminal designer Joseph-André Motte and a new book about works by Sheila Hicks commissioned for architectural projects.

30 W 12th St New York
T +1 212 989 5750
www.demischdanant.com